

Datasheet for ABIN2780659  
**anti-DLX5 antibody (N-Term)**

## 3 Images

[Go to Product page](#)

## Overview

Quantity:	100 µL
Target:	DLX5
Binding Specificity:	N-Term
Reactivity:	Human, Mouse, Rat, Cow, Dog, Rabbit, Horse, Pig, Guinea Pig
Host:	Rabbit
Clonality:	Polyclonal
Conjugate:	This DLX5 antibody is un-conjugated
Application:	Western Blotting (WB), Immunohistochemistry (IHC)

## Product Details

Immunogen:	The immunogen is a synthetic peptide directed towards the N terminal region of human DLX5
Sequence:	MTGVFDRRVP SIRSGDFQAP FQTSAAMHHP SQESPTLPES SATDSDYYSP
Predicted Reactivity:	Cow: 100%, Dog: 100%, Guinea Pig: 93%, Horse: 100%, Human: 100%, Mouse: 100%, Pig: 100%, Rabbit: 100%, Rat: 100%
Characteristics:	This is a rabbit polyclonal antibody against DLX5. It was validated on Western Blot and immunohistochemistry.
Purification:	Protein A purified

## Target Details

Target:	DLX5
---------	------

## Target Details

Alternative Name:	DLX5 ( <a href="#">DLX5 Products</a> )
Background:	<p>DLX5 is a member of a homeobox transcription factor gene family similar to the Drosophila distal-less gene. This protein may play a role in bone development and fracture healing. Mutation in its gene, which is located in a tail-to-tail configuration with another member of the family on the long arm of chromosome 7, may be associated with split-hand/split-foot malformation. This gene encodes a member of a homeobox transcription factor gene family similar to the Drosophila distal-less gene. The encoded protein may play a role in bone development and fracture healing. Mutation in this gene, which is located in a tail-to-tail configuration with another member of the family on the long arm of chromosome 7, may be associated with split-hand/split-foot malformation.</p> <p>Alias Symbols: SHFM1D</p> <p>Protein Interaction Partner: UBC, SOX8, SPEN, NCOA2, SOX10, MAGED1, MSX2, MSX1, HOXC8, DLX5, DLX2,</p> <p>Protein Size: 289</p>
Molecular Weight:	31 kDa
Gene ID:	1749
NCBI Accession:	<a href="#">NM_005221</a> , <a href="#">NP_005212</a>
UniProt:	<a href="#">P56178</a>

## Application Details

Application Notes:	Optimal working dilutions should be determined experimentally by the investigator.
Comment:	Antigen size: 289 AA
Restrictions:	For Research Use only

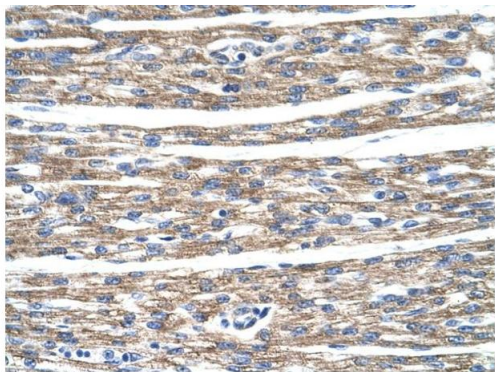
## Handling

Format:	Liquid
Concentration:	Lot specific
Buffer:	Liquid. Purified antibody supplied in 1x PBS buffer with 0.09 % (w/v) sodium azide and 2 % sucrose.
Preservative:	Sodium azide
Precaution of Use:	This product contains Sodium azide: a POISONOUS AND HAZARDOUS SUBSTANCE which

Handling

	should be handled by trained staff only.
Handling Advice:	Avoid repeated freeze-thaw cycles.
Storage:	-20 °C
Storage Comment:	For short term use, store at 2-8°C up to 1 week. For long term storage, store at -20°C in small aliquots to prevent freeze-thaw cycles.

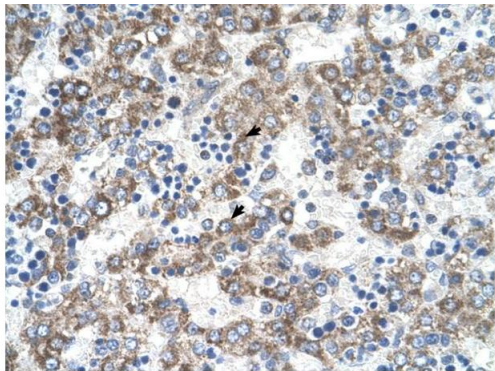
Images



Rabbit Anti-DLX5 Antibody  
Catalog Number: ARP38585  
Lot Number: QC8257  
Paraffin Embedded Tissue: Human Heart  
Cells with Positive label: Myocardial cells (Indicated with Arrows)  
Antibody Concentration: 4.0-8.0 µg/ml  
Magnification: 400X

Immunohistochemistry

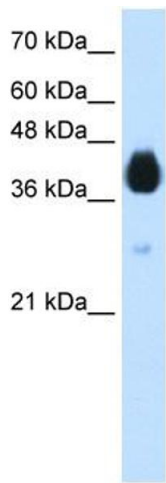
**Image 1.** Human Heart



Rabbit Anti-DLX5 Antibody  
Catalog Number: ARP38585  
Lot Number: QC8257  
Paraffin Embedded Tissue: Human Liver  
Cells with Positive label: Hepatocytes (Indicated with Arrows)  
Antibody Concentration: 4.0-8.0 µg/ml  
Magnification: 400X

Immunohistochemistry

**Image 2.** Human Liver



Western Blotting

**Image 3.** WB Suggested Anti-DLX5 Antibody Titration:  
1.25ug/ml ELISA Titer: 1:1562500 Positive Control:  
Transfected 293T