

Datasheet for ABIN2780660  
**anti-DLX5 antibody (C-Term)**

## 3 Images

[Go to Product page](#)

## Overview

Quantity:	100 µL
Target:	DLX5
Binding Specificity:	C-Term
Reactivity:	Human, Mouse, Rat, Cow, Dog, Rabbit, Horse, Pig, Guinea Pig
Host:	Rabbit
Clonality:	Polyclonal
Conjugate:	This DLX5 antibody is un-conjugated
Application:	Western Blotting (WB), Immunohistochemistry (IHC)

## Product Details

Immunogen:	The immunogen is a synthetic peptide directed towards the C terminal region of human DLX5
Sequence:	HPPTSNQSPA SSYLENSASW Y TSAASSINS HLP PPGSLQH PLALASGTLY
Predicted Reactivity:	Cow: 100%, Dog: 100%, Guinea Pig: 93%, Horse: 100%, Human: 100%, Mouse: 100%, Pig: 100%, Rabbit: 100%, Rat: 100%
Characteristics:	This is a rabbit polyclonal antibody against DLX5. It was validated on Western Blot using a cell lysate as a positive control.
Purification:	Protein A purified

## Target Details

Target:	DLX5
---------	------

## Target Details

Alternative Name:	DLX5 ( <a href="#">DLX5 Products</a> )
Background:	<p>DLX5 is a member of a homeobox transcription factor family. DLX5 may play a role in bone development and fracture healing. Mutation in this gene, which is located in a tail-to-tail configuration with another member of the family on the long arm of chromosome 7, may be associated with split-hand/split-foot malformation. This gene encodes a member of a homeobox transcription factor gene family similar to the Drosophila distal-less gene. The encoded protein may play a role in bone development and fracture healing. Mutation in this gene, which is located in a tail-to-tail configuration with another member of the family on the long arm of chromosome 7, may be associated with split-hand/split-foot malformation.</p> <p>Alias Symbols: SHFM1D</p> <p>Protein Interaction Partner: UBC, SOX8, SPEN, NCOA2, SOX10, MAGED1, MSX2, MSX1, HOXC8, DLX5, DLX2,</p> <p>Protein Size: 289</p>
Molecular Weight:	32 kDa
Gene ID:	1749
NCBI Accession:	<a href="#">NM_005221</a> , <a href="#">NP_005212</a>
UniProt:	<a href="#">P56178</a>

## Application Details

Application Notes:	Optimal working dilutions should be determined experimentally by the investigator.
Comment:	Antigen size: 289 AA
Restrictions:	For Research Use only

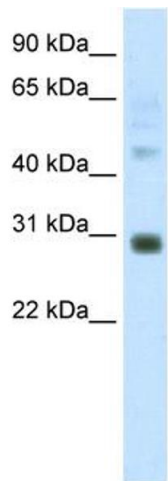
## Handling

Format:	Liquid
Concentration:	Lot specific
Buffer:	Liquid. Purified antibody supplied in 1x PBS buffer with 0.09 % (w/v) sodium azide and 2 % sucrose.
Preservative:	Sodium azide
Precaution of Use:	This product contains Sodium azide: a POISONOUS AND HAZARDOUS SUBSTANCE which should be handled by trained staff only.

Handling

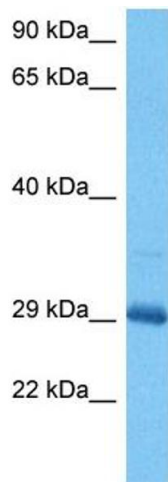
Handling Advice:	Avoid repeated freeze-thaw cycles.
Storage:	-20 °C
Storage Comment:	For short term use, store at 2-8°C up to 1 week. For long term storage, store at -20°C in small aliquots to prevent freeze-thaw cycles.

Images



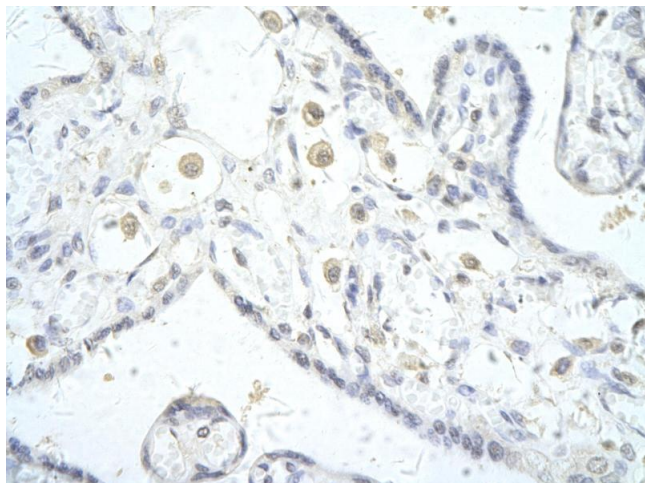
**Western Blotting**

**Image 1.** WB Suggested Anti-DLX5 Antibody Titration: 1.25ug/ml ELISA Titer: 1:312500 Positive Control: Human Placenta



**Western Blotting**

**Image 2.** Host: Mouse Target Name: DLX5 Sample Tissue: Mouse Skeletal Muscle Antibody Dilution: 1ug/ml



#### Immunohistochemistry

**Image 3.** Rabbit Anti-DLX5 antibody Paraffin Embedded  
Tissue: Human Placenta cell Cellular Data: Epithelial cells of  
renal tubule Antibody Concentration: 4.0-8.0 ug/ml  
Magnification: 400X