

Datasheet for ABIN2780665
anti-ETS2 antibody (Middle Region)



[Go to Product page](#)

4 Images

Overview

| | |
|----------------------|--|
| Quantity: | 100 µL |
| Target: | ETS2 |
| Binding Specificity: | Middle Region |
| Reactivity: | Human, Mouse, Rat, Dog, Horse, Cow, Guinea Pig, Rabbit, Sheep, Goat, Zebrafish (Danio rerio) |
| Host: | Rabbit |
| Clonality: | Polyclonal |
| Conjugate: | This ETS2 antibody is un-conjugated |
| Application: | Western Blotting (WB) |

Product Details

| | |
|-----------------------|--|
| Immunogen: | The immunogen is a synthetic peptide directed towards the middle region of human ETS2 |
| Sequence: | DPDEVARRWG KRKNKPKMNY EKLSRGLRYY YDKNIIHKTS GKRYVYRFVC |
| Predicted Reactivity: | Cow: 100%, Dog: 100%, Goat: 100%, Guinea Pig: 100%, Horse: 100%, Human: 100%, Mouse: 100%, Rabbit: 100%, Rat: 100%, Sheep: 100%, Zebrafish: 100% |
| Characteristics: | This is a rabbit polyclonal antibody against ETS2. It was validated on Western Blot using a cell lysate as a positive control. |
| Purification: | Affinity Purified |

Target Details

| | |
|---------|------|
| Target: | ETS2 |
|---------|------|

Target Details

Alternative Name: [ETS2 \(ETS2 Products\)](#)

Background: ETS2 contains an ETS DNA-binding domain and belongs to the ETS family. ETS2 is a target of protein kinase C and upregulates GM-CSF. Ets2 and its targets play essential roles in endothelial cell function. Coexpression of Ets-2 and SRC-1 significantly associated with the rate of recurrence and HER expression in breast cancer. Overexpression of ETS2 is associated with human esophageal squamous cell carcinoma. ETS transcriptions factors, such as ETS2, regulate numerous genes and are involved in stem cell development, cell senescence and death, and tumorigenesis. The conserved ETS domain within these proteins is a winged helix-turn-helix DNA-binding domain that recognizes the core consensus DNA sequence GGAA/T of target genes (Dwyer et al., 2007 [PubMed 17986575]).[supplied by OMIM]. Publication Note: This RefSeq record includes a subset of the publications that are available for this gene. Please see the Entrez Gene record to access additional publications.

Alias Symbols: ETS2IT1

Protein Interaction Partner: UBC, RFWD2, TWIST1, POU5F1, TWIST2, ZFYVE9, SRA1, XPO1, TP53, SUMO2, EP300, CREBBP, NCOR1, NCOA3, SRC, ZMYND11, TDP2, STAT5B, CDK10, SMARCA4, JUN, ERG, ETS2, ETS1, NR3C1, GATA3, FOS, SPI1, BRCA1,

Protein Size: 469

Molecular Weight: 53 kDa

Gene ID: 2114

NCBI Accession: [NM_005239](#), [NP_005230](#)

UniProt: [P15036](#)

Pathways: [EGFR Signaling Pathway](#), [Myometrial Relaxation and Contraction](#)

Application Details

Application Notes: Optimal working dilutions should be determined experimentally by the investigator.

Comment: Antigen size: 469 AA

Restrictions: For Research Use only

Handling

Format: Liquid

Concentration: Lot specific

Handling

| | |
|--------------------|---|
| Buffer: | Liquid. Purified antibody supplied in 1x PBS buffer with 0.09 % (w/v) sodium azide and 2 % sucrose. |
| Preservative: | Sodium azide |
| Precaution of Use: | This product contains Sodium azide: a POISONOUS AND HAZARDOUS SUBSTANCE which should be handled by trained staff only. |
| Handling Advice: | Avoid repeated freeze-thaw cycles. |
| Storage: | -20 °C |
| Storage Comment: | For short term use, store at 2-8°C up to 1 week. For long term storage, store at -20°C in small aliquots to prevent freeze-thaw cycles. |

Images



Western Blotting

Image 1. WB Suggested Anti-ETS2 Antibody Titration: 0.2-1 ug/ml ELISA Titer: 1:312500 Positive Control: Human kidney

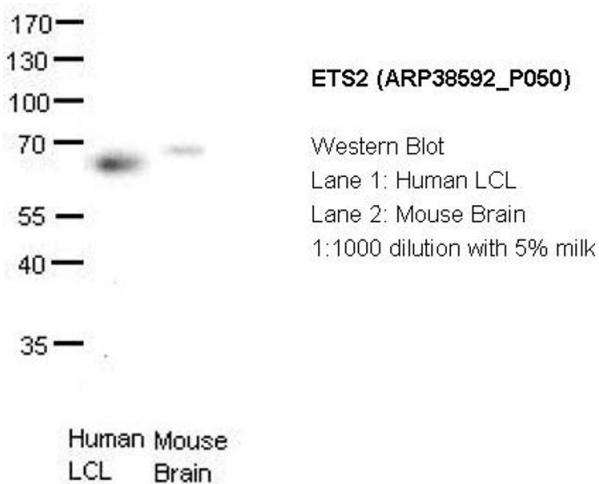
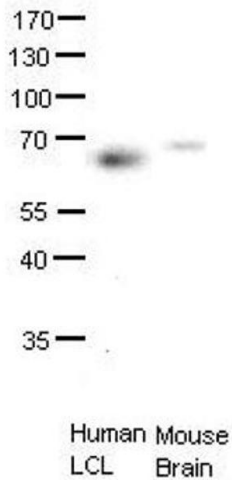


Image 2.



Western Blotting

Image 3. ETS2 antibody - middle region validated by WB using human LCL and mouse brains at 1:1000.

Please check the [product details page](#) for more images. Overall 4 images are available for ABIN2780665.