

Datasheet for ABIN2780670
anti-HCFC1 antibody (N-Term)

3 Images

[Go to Product page](#)

Overview

Quantity:	100 µL
Target:	HCFC1
Binding Specificity:	N-Term
Reactivity:	Human, Mouse, Rat, Dog, Horse, Rabbit, Cow, Zebrafish (Danio rerio), Guinea Pig
Host:	Rabbit
Clonality:	Polyclonal
Conjugate:	This HCFC1 antibody is un-conjugated
Application:	Western Blotting (WB)

Product Details

Immunogen:	The immunogen is a synthetic peptide directed towards the N terminal region of human HCFC1
Sequence:	GTRLLVFGGM VEYGYKYSNDL YELQASRWEW KRLKAKTPKN GPPPCPRLGH
Predicted Reactivity:	Cow: 100%, Dog: 100%, Guinea Pig: 100%, Horse: 100%, Human: 100%, Mouse: 100%, Rabbit: 100%, Rat: 100%, Zebrafish: 92%
Characteristics:	This is a rabbit polyclonal antibody against HCFC1. It was validated on Western Blot using a cell lysate as a positive control.
Purification:	Protein A purified

Target Details

Target:	HCFC1
---------	-------

Target Details

Alternative Name:	HCFC1 (HCFC1 Products)
Background:	<p>HCFC1 is a member of the host cell factor family with five Kelch repeats, a fibronectin-like motif, and six HCF repeats, each of which contains a highly specific cleavage signal. This nuclear coactivator is proteolytically cleaved at one of the six possible sites, resulting in the creation of an N-terminal chain and the corresponding C-terminal chain. The final form of this protein consists of noncovalently bound N- and C-terminal chains. The protein is involved in control of the cell cycle and transcriptional regulation during herpes simplex virus infection.</p> <p>Alias Symbols: CFF, HCF1, HFC1, VCAF, HCF-1</p> <p>Protein Interaction Partner: FBXW11, BAP1, NUDCD3, CREB3, UBC, RPA3, RPA2, RPA1, EED, EEF1D, CREBZF, LMNA, OGT, POU2F1, NOTCH1, UL48, RBBP5, PPP1CB, PPP1CA, DPY30, WDR5, MAP3K7, HCFC1, EGFR, CLP1, YEATS2, CDK2, CUL3, USF1, NR2C1, THAP11, SIRT7, ELAVL1, SUMO2, ASH2L, SNRPN, SNRPB, YY1</p> <p>Protein Size: 428</p>
Molecular Weight:	45 kDa
Gene ID:	3054
NCBI Accession:	NM_005334

Application Details

Application Notes:	Optimal working dilutions should be determined experimentally by the investigator.
Comment:	Antigen size: 428 AA
Restrictions:	For Research Use only

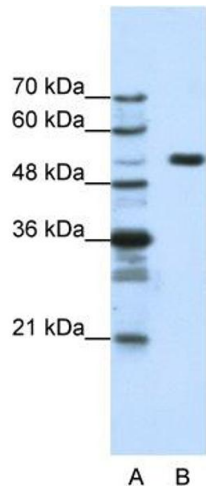
Handling

Format:	Liquid
Concentration:	Lot specific
Buffer:	Liquid. Purified antibody supplied in 1x PBS buffer with 0.09 % (w/v) sodium azide and 2 % sucrose.
Preservative:	Sodium azide
Precaution of Use:	This product contains Sodium azide: a POISONOUS AND HAZARDOUS SUBSTANCE which should be handled by trained staff only.
Handling Advice:	Avoid repeated freeze-thaw cycles.

Handling

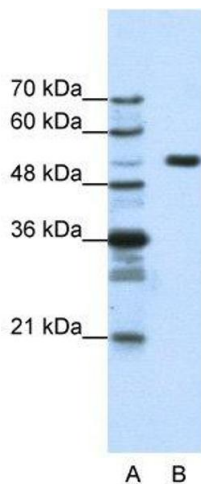
Storage:	-20 °C
Storage Comment:	For short term use, store at 2-8°C up to 1 week. For long term storage, store at -20°C in small aliquots to prevent freeze-thaw cycles.

Images



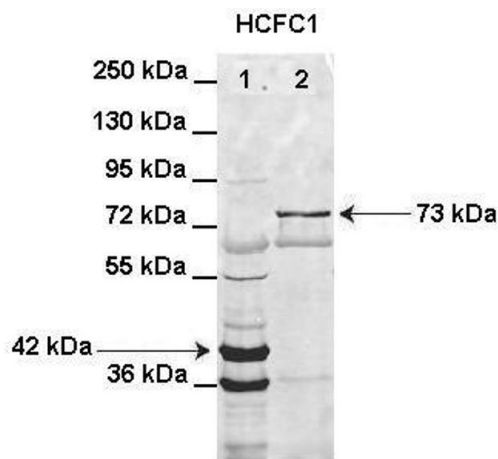
Western Blotting

Image 1. WB Suggested Anti-HCFC1 Antibody Titration: 1.25ug/ml Positive Control: HepG2 cell lysate HCFC1 is strongly supported by BioGPS gene expression data to be expressed in Human HepG2 cells



Western Blotting

Image 2. WB Suggested Anti-HCFC1 Antibody Titration: 1.25 µg/mL Positive Control: HepG2 cell lysate HCFC1 is strongly supported by BioGPS gene expression data to be expressed in Human HepG2 cells



Western Blotting

Image 3. Lanes: Lane1: HIS-HCFC1 16-363aa (42kD) transformed bacteria lysate Lane2: GFP-HCFC1 363-2002aa (73kD) transformed bacteria lysate elution sample Primary Antibody Dilution: 1:1000 Secondary Antibody: Anti-rabbit AlexaFluor 680 Secondary Antibody Dilution: 1:10000 Gene Name: HCFC1 Submitted by: Anonymous

See Immunoblot 2 Data and Customer Feedback for more information