



Datasheet for ABIN2780673
anti-SMAD4 antibody (N-Term)



[Go to Product page](#)

4 Images

Overview

Quantity:	100 µL
Target:	SMAD4
Binding Specificity:	N-Term
Reactivity:	Human, Mouse, Rat, Cow, Zebrafish (Danio rerio), Dog, Goat, Guinea Pig, Horse, Rabbit, Sheep
Host:	Rabbit
Clonality:	Polyclonal
Conjugate:	This SMAD4 antibody is un-conjugated
Application:	Western Blotting (WB), Immunohistochemistry (IHC)

Product Details

Immunogen:	The immunogen is a synthetic peptide directed towards the N terminal region of human SMAD4
Sequence:	MDNMSITNTP TSNDACLSIV HSLMCHRQGG ESETFAKRAI ESLVKKLKEK
Predicted Reactivity:	Cow: 100%, Dog: 100%, Goat: 100%, Guinea Pig: 100%, Horse: 100%, Human: 100%, Mouse: 100%, Rabbit: 100%, Rat: 100%, Sheep: 100%, Zebrafish: 100%
Characteristics:	This is a rabbit polyclonal antibody against SMAD4. It was validated on Western Blot using a cell lysate as a positive control.
Purification:	Affinity Purified

Target Details

Target:	SMAD4
---------	-------

Target Details

Alternative Name: SMAD4 ([SMAD4 Products](#))

Background: SMAD4 is one of the Smad family members, which are essential intracellular signalling components of the transforming growth factor-beta (TGF-beta) superfamily. Smad2 and Smad3 are structurally highly similar and mediate TGF-beta signals. Smad4 is distantl

Alias Symbols: DPC4, JIP, MADH4, MYHRS

Protein Interaction Partner: RASSF5, LMO4, SMAD3, SMAD2, SKIL, UBC, NEDD8, SUMO1, SMURF2, SMURF1, TRIM33, CRYAB, COPS5, NLK, OTUB1, SMAD9, UBE2I, FHL3, FHL2, FHL1, CSNK1D, TGFB1I1, SMAD1, NCOR1, SKI, KLF5, IRF7, IRF3, ZNF521, ZNF423, SOX12, SNRNP70, RPL28, RFX1, RELA, RALA, PSMD11, P

Protein Size: 552

Molecular Weight: 60 kDa

Gene ID: 4089

NCBI Accession: [NM_005359](#), [NP_005350](#)

UniProt: [Q13485](#)

Pathways: [Cell Division Cycle](#), [Chromatin Binding](#), [Autophagy](#)

Application Details

Application Notes: Optimal working dilutions should be determined experimentally by the investigator.

Comment: Antigen size: 552 AA

Restrictions: For Research Use only

Handling

Format: Liquid

Concentration: Lot specific

Buffer: Liquid. Purified antibody supplied in 1x PBS buffer with 0.09 % (w/v) sodium azide and 2 % sucrose.

Preservative: Sodium azide

Precaution of Use: This product contains Sodium azide: a POISONOUS AND HAZARDOUS SUBSTANCE which should be handled by trained staff only.

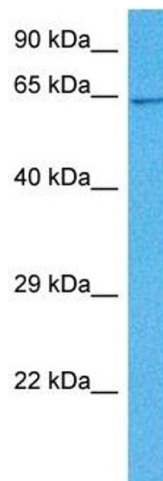
Handling Advice: Avoid repeated freeze-thaw cycles.

Handling

Storage: -20 °C

Storage Comment: For short term use, store at 2-8°C up to 1 week. For long term storage, store at -20°C in small aliquots to prevent freeze-thaw cycles.

Images

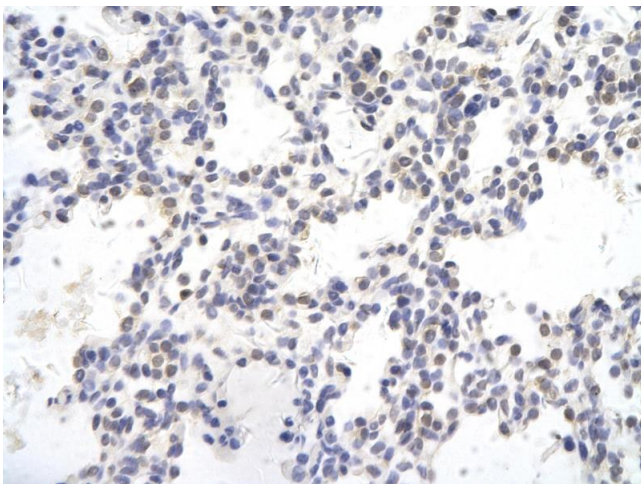


Western Blotting

Image 1. WB Suggested Anti-SMAD4 Antibody Titration: 0.2-1 ug/ml ELISA Titer: 1:312500 Positive Control: 293T cell lysate SMAD4 is supported by BioGPS gene expression data to be expressed in HEK293T

Western Blotting

Image 2. Host: Mouse Target Name: SMAD4 Sample Tissue: Mouse Kidney Antibody Dilution: 1ug/ml



Immunohistochemistry

Image 3. Rabbit Anti-SMAD4 antibody Paraffin Embedded Tissue: Human Lung cell Cellular Data: Epithelial cells of renal tubule Antibody Concentration: 4.0-8.0 ug/ml Magnification: 400X

Please check the [product details page](#) for more images. Overall 4 images are available for ABIN2780673.