

Datasheet for ABIN2780688
anti-MED6 antibody (C-Term)[Go to Product page](#)

2 Images

Overview

Quantity:	100 µL
Target:	MED6
Binding Specificity:	C-Term
Reactivity:	Human, Mouse, Rat, Dog, Cow, Horse, Rabbit
Host:	Rabbit
Clonality:	Polyclonal
Conjugate:	This MED6 antibody is un-conjugated
Application:	Western Blotting (WB), Immunohistochemistry (IHC)

Product Details

Immunogen:	The immunogen is a synthetic peptide directed towards the C-terminal region of Human MED6
Sequence:	KPGEKPVPVD QTKKEAEPIP ETVKPEEKET TKNVQQTVSA KGPPEKRMRL
Predicted Reactivity:	Cow: 79%, Dog: 86%, Horse: 93%, Human: 100%, Mouse: 79%, Rabbit: 93%, Rat: 86%
Characteristics:	This is a rabbit polyclonal antibody against MED6. It was validated on Western Blot.
Purification:	Affinity Purified

Target Details

Target:	MED6
Alternative Name:	MED6 (MED6 Products)
Background:	MED6 is a component of the Mediator complex, a coactivator involved in the regulated

Target Details

transcription of nearly all RNA polymerase II-dependent genes. Mediator functions as a bridge to convey information from gene-specific regulatory proteins to the basal RNA polymerase II transcription machinery. And mediator is recruited to promoters by direct interactions with regulatory proteins and serves as a scaffold for the assembly of a functional preinitiation complex with RNA polymerase II and the general transcription factors.

Alias Symbols: NY-REN-28

Protein Interaction Partner: TARDBP, UBC, CDK19, CDK8, MED10, MED23, CCNC, MED19, MED26, FBXW7, MED11, MED28, MED29, MED4, MED12, MED7, MED21, MED1, SMARCA4, BCL6, SUZ12, CUL1, SKP1, CTDP1, MED25, SREBF1, MED15, VDR, OBFC1, MED18, ZC3H13, TADA2A, RARA, PARP1, SMAD3, SMAD2, SMAD1, MED

Protein Size: 246

Molecular Weight: 28 kDa

Gene ID: 10001

NCBI Accession: [NM_005466](#), [NP_005457](#)

UniProt: [O75586](#)

Pathways: [Stem Cell Maintenance](#), [Regulation of Lipid Metabolism by PPARalpha](#)

Application Details

Restrictions: For Research Use only

Handling

Format: Liquid

Concentration: 1 mg/mL

Buffer: Liquid. Purified antibody supplied in 1x PBS buffer with 0.09 % (w/v) sodium azide and 2 % sucrose.

Preservative: Sodium azide

Precaution of Use: This product contains Sodium azide: a POISONOUS AND HAZARDOUS SUBSTANCE which should be handled by trained staff only.

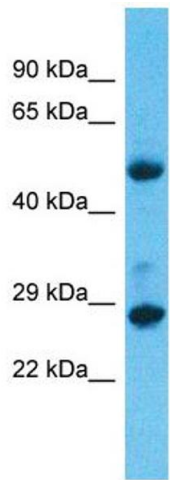
Handling Advice: Avoid repeat freeze-thaw cycles.

Storage: -20 °C

Storage Comment: For short term use, store at 2-8°C up to 1 week. For long term storage, store at -20°C in small

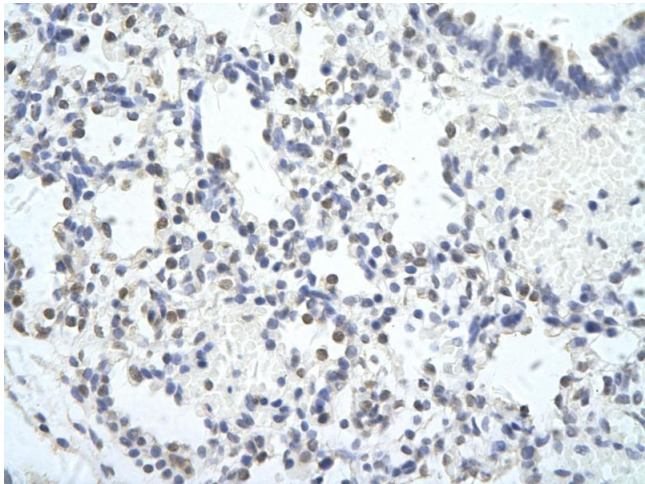
aliquots to prevent freeze-thaw cycles.

Images



Western Blotting

Image 1. Host: Rabbit Target Name: MED6 Sample Type: Lung Tumor lysates Antibody Dilution: 1.0ug/ml



Immunohistochemistry

Image 2. Rabbit Anti-MED6 Antibody Paraffin Embedded Tissue: Human Lung cell Cellular Data: Epithelial cells of renal tubule Antibody Concentration: 4.0-8.0 ug/ml Magnification: 400X