

Datasheet for ABIN2780697

anti-Calpain 15/SOLH antibody (Middle Region)[Go to Product page](#)**1** Image

Overview

Quantity:	100 µL
Target:	Calpain 15/SOLH (SOLH)
Binding Specificity:	Middle Region
Reactivity:	Human, Mouse, Dog, Guinea Pig, Cow, Horse, Rabbit, Zebrafish (Danio rerio)
Host:	Rabbit
Clonality:	Polyclonal
Conjugate:	This Calpain 15/SOLH antibody is un-conjugated
Application:	Western Blotting (WB)

Product Details

Immunogen:	The immunogen is a synthetic peptide directed towards the middle region of human SOLH
Sequence:	FNVVSTRGSL RTQDSVPPLH RQVLVILSQL EGNAGFSITH RLAHRKAAQA
Predicted Reactivity:	Cow: 100%, Dog: 100%, Guinea Pig: 100%, Horse: 100%, Human: 100%, Mouse: 100%, Rabbit: 100%, Zebrafish: 100%
Characteristics:	This is a rabbit polyclonal antibody against SOLH. It was validated on Western Blot using a cell lysate as a positive control.
Purification:	Affinity Purified

Target Details

Target:	Calpain 15/SOLH (SOLH)
---------	------------------------

Target Details

Alternative Name:	SOLH (SOLH Products)
Background:	<p>SOLH is a protein containing zinc-finger-like repeats and a calpain-like protease domain. SOLH may function as a transcription factor, RNA-binding protein, or in protein-protein interactions during visual system development. This gene encodes a protein containing zinc-finger-like repeats and a calpain-like protease domain. The encoded protein may function as a transcription factor, RNA-binding protein, or in protein-protein interactions during visual system development.</p> <p>Alias Symbols: CAPN15, MGC131491, SOLH</p> <p>Protein Interaction Partner: UBC,</p> <p>Protein Size: 1086</p>
Molecular Weight:	117 kDa
Gene ID:	6650
NCBI Accession:	NM_005632 , NP_005623
UniProt:	O75808

Application Details

Application Notes:	Optimal working dilutions should be determined experimentally by the investigator.
Comment:	Antigen size: 1086 AA
Restrictions:	For Research Use only

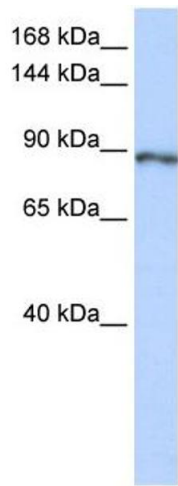
Handling

Format:	Liquid
Concentration:	Lot specific
Buffer:	Liquid. Purified antibody supplied in 1x PBS buffer with 0.09 % (w/v) sodium azide and 2 % sucrose.
Preservative:	Sodium azide
Precaution of Use:	This product contains Sodium azide: a POISONOUS AND HAZARDOUS SUBSTANCE which should be handled by trained staff only.
Handling Advice:	Avoid repeated freeze-thaw cycles.
Storage:	-20 °C

Handling

Storage Comment: For short term use, store at 2-8°C up to 1 week. For long term storage, store at -20°C in small aliquots to prevent freeze-thaw cycles.

Images



Western Blotting

Image 1. WB Suggested Anti-SOLH Antibody Titration: 0.2-1 ug/ml ELISA Titer: 1:312500 Positive Control: Human Lung