

Datasheet for ABIN2780701  
**anti-TAF6 antibody (N-Term)**[Go to Product page](#)**1** Image**1** Publication

## Overview

Quantity:	100 µL
Target:	TAF6
Binding Specificity:	N-Term
Reactivity:	Human, Mouse, Rat, Dog, Horse, Guinea Pig, Cow, Rabbit, Zebrafish (Danio rerio)
Host:	Rabbit
Clonality:	Polyclonal
Conjugate:	This TAF6 antibody is un-conjugated
Application:	Western Blotting (WB)

## Product Details

Immunogen:	The immunogen is a synthetic peptide directed towards the N terminal region of human TAF6
Sequence:	TVLPSESMKV VAESMGIAQI QEETCQLLTD EVSYRIKEIA QDALKFMHMG
Predicted Reactivity:	Cow: 100%, Dog: 100%, Guinea Pig: 100%, Horse: 100%, Human: 100%, Mouse: 100%, Rabbit: 100%, Rat: 100%, Zebrafish: 92%
Characteristics:	This is a rabbit polyclonal antibody against TAF6. It was validated on Western Blot using a cell lysate as a positive control.
Purification:	Protein A purified

## Target Details

Target:	TAF6
---------	------

## Target Details

Alternative Name:	TAF6 ( <a href="#">TAF6 Products</a> )
Background:	<p>TFIID is composed of the TATA-binding protein (TBP) and a group of evolutionarily conserved proteins known as TBP-associated factors or TAFs. TAFs may participate in basal transcription, serve as coactivators, function in promoter recognition or modify general transcription factors (GTFs) to facilitate complex assembly and transcription initiation. TAF6 is one of the smaller subunits of TFIID that binds weakly to TBP but strongly to TAF1, the largest subunit of TFIID. One of the isoforms has been shown to preclude binding of one of the other TFIID subunits, thereby reducing transcription and initiating signals that trigger apoptosis.</p> <p>Alias Symbols: TAF2E, TAFII70, TAFII80, TAFII85, MGC:8964, TAFII-70, TAFII-80, TAF(II)70, TAF(II)80</p> <p>Protein Interaction Partner: SOX5, HNF4A, MED26, TRRAP, HIST3H3, UBC, TBP, AHR, APP, TAF1L, TAF3, TAF9B, TAF10, TAF9, TAF7, TAF5, TAF4, TAF2, TAF1, KMT2A, USF1, ERCC1, TAF8, KAT2A, SETD7, NR1D2, NCOR1, NFYC, NFYB, NFYA, MBD3, SIN3A, ALL1, SAP30, SMARCC2, SMARCC1, SMARCB1, SMARCA2, RB</p> <p>Protein Size: 677</p>
Molecular Weight:	73 kDa
Gene ID:	6878
NCBI Accession:	<a href="#">NM_005641</a> , <a href="#">NP_005632</a>
UniProt:	<a href="#">P49848</a>

## Application Details

Application Notes:	Optimal working dilutions should be determined experimentally by the investigator.
Comment:	Antigen size: 677 AA
Restrictions:	For Research Use only

## Handling

Format:	Liquid
Concentration:	Lot specific
Buffer:	Liquid. Purified antibody supplied in 1x PBS buffer with 0.09 % (w/v) sodium azide and 2 % sucrose.
Preservative:	Sodium azide

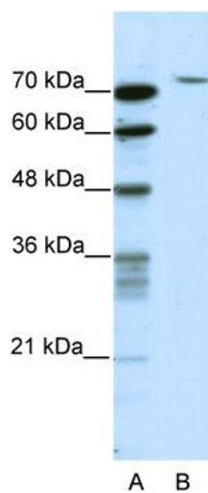
## Handling

Precaution of Use:	This product contains Sodium azide: a POISONOUS AND HAZARDOUS SUBSTANCE which should be handled by trained staff only.
Handling Advice:	Avoid repeated freeze-thaw cycles.
Storage:	-20 °C
Storage Comment:	For short term use, store at 2-8°C up to 1 week. For long term storage, store at -20°C in small aliquots to prevent freeze-thaw cycles.

## Publications

Product cited in:	Hu, Lausted, Yoo, Yan, Brightman, Chen, Wang, Bu, Hood: "Quantitative liver-specific protein fingerprint in blood: a signature for hepatotoxicity." in: <b>Theranostics</b> , Vol. 4, Issue 2, pp. 215-28, (2014) ( <a href="#">PubMed</a> ).
-------------------	---

## Images



### Western Blotting

**Image 1.** WB Suggested Anti-TAF6 Antibody Titration: 2.5ug/ml ELISA Titer: 1:312500 Positive Control: HepG2 cell lysate