

Datasheet for ABIN2780703  
**anti-TCF20 antibody (C-Term)**



[Go to Product page](#)

3 Images

Overview

Quantity:	100 µL
Target:	TCF20
Binding Specificity:	C-Term
Reactivity:	Mouse, Human, Rat, Cow, Dog, Horse, Rabbit, Guinea Pig
Host:	Rabbit
Clonality:	Polyclonal
Conjugate:	This TCF20 antibody is un-conjugated
Application:	Western Blotting (WB), Immunohistochemistry (IHC)

Product Details

Immunogen:	The immunogen is a synthetic peptide directed towards the C terminal region of human TCF20
Sequence:	HYPCAIDADC LLHEENFSVR CPKHKPPLPC PLPPLQNKTA KGSLSTEQSE
Predicted Reactivity:	Cow: 100%, Dog: 100%, Guinea Pig: 93%, Horse: 100%, Human: 100%, Mouse: 100%, Rabbit: 100%, Rat: 93%
Characteristics:	This is a rabbit polyclonal antibody against TCF20. It was validated on Western Blot.
Purification:	Affinity Purified

Target Details

Target:	TCF20
Alternative Name:	TCF20 ( <a href="#">TCF20 Products</a> )

## Target Details

---

**Background:** The protein encoded by this gene binds a platelet-derived growth factor-responsive element in the matrix metalloproteinase 3 (stromelysin 1) promoter. The protein localizes to the nucleus and displays DNA-binding and transactivation activities. It is thought to be a transcriptional coactivator, enhancing the activity of transcription factors such as JUN and SP1.

Alias Symbols: AR1, KIAA0292, SPBP

Protein Interaction Partner: UBC, AR, SIRT7, HIST2H2BE, HIST2H2AC, SUMO2, SMAD1, MAPK14, TCF20, RNF4, JUN, ESR1,

Protein Size: 1960

---

**Molecular Weight:** 212 kDa

---

**Gene ID:** 6942

---

**NCBI Accession:** [NM\\_005650](#), [NP\\_005641](#)

---

**UniProt:** [Q9UGU0](#)

## Application Details

---

**Application Notes:** Optimal working dilutions should be determined experimentally by the investigator.

---

**Comment:** Antigen size: 1960 AA

---

**Restrictions:** For Research Use only

## Handling

---

**Format:** Liquid

---

**Concentration:** Lot specific

---

**Buffer:** Liquid. Purified antibody supplied in 1x PBS buffer with 0.09 % (w/v) sodium azide and 2 % sucrose.

---

**Preservative:** Sodium azide

---

**Precaution of Use:** This product contains Sodium azide: a POISONOUS AND HAZARDOUS SUBSTANCE which should be handled by trained staff only.

---

**Handling Advice:** Avoid repeated freeze-thaw cycles.

---

**Storage:** -20 °C

---

**Storage Comment:** For short term use, store at 2-8°C up to 1 week. For long term storage, store at -20°C in small aliquots to prevent freeze-thaw cycles.

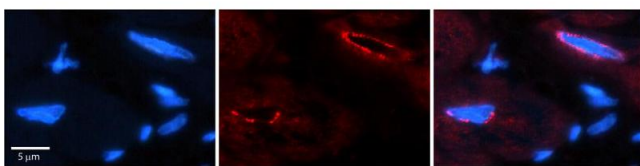


### Western Blotting

**Image 1.** WB Suggested Anti-TCF20 Antibody Titration: 0.2-1 ug/ml ELISA Titer: 1:62500 Positive Control: OVCAR-3 cell lysate TCF20 is supported by BioGPS gene expression data to be expressed in OVCAR3

### Western Blotting

**Image 2.** WB Suggested Anti-TCF20 Antibody Titration: 0.2-1 µg/mL ELISA Titer: 1:2500 Positive Control: OVCAR-3 cell lysate TCF20 is supported by BioGPS gene expression data to be expressed in OVCAR3



### Immunohistochemistry

**Image 3.** Rabbit Anti-TCF20 Antibody Formalin Fixed Paraffin Embedded Tissue: Human Adult heart Observed Staining: Nuclear (nuclear membrane) Primary Antibody Concentration: 1:100 Secondary Antibody: Donkey anti-Rabbit-Cy2/3 Secondary Antibody Concentration: 1:200 Magnification: 20X Exposure Time: 0.5 – 2.0 sec Protocol located in Reviews and Data.