



[Go to Product page](#)

Datasheet for ABIN2780705
anti-KLF10/TIEG1 antibody (C-Term)

2 Images

Overview

Quantity:	100 µL
Target:	KLF10/TIEG1 (KLF10)
Binding Specificity:	C-Term
Reactivity:	Human, Mouse, Rat, Rabbit, Cow, Dog, Horse, Guinea Pig, Zebrafish (Danio rerio)
Host:	Rabbit
Clonality:	Polyclonal
Conjugate:	This KLF10/TIEG1 antibody is un-conjugated
Application:	Western Blotting (WB), Immunohistochemistry (IHC)

Product Details

Immunogen:	The immunogen is a synthetic peptide directed towards the C terminal region of human KLF10
Sequence:	RTHTGEKKFA CPMCDRRFMR SDHLTKHARR HLSAKKLPNW QMEVSKLNDI
Predicted Reactivity:	Cow: 100%, Dog: 100%, Guinea Pig: 100%, Horse: 100%, Human: 100%, Mouse: 100%, Rabbit: 100%, Rat: 100%, Zebrafish: 100%
Characteristics:	This is a rabbit polyclonal antibody against KLF10. It was validated on Western Blot using a cell lysate as a positive control.
Purification:	Protein A purified

Target Details

Target:	KLF10/TIEG1 (KLF10)
---------	---------------------

Target Details

Alternative Name:	KLF10 (KLF10 Products)
Background:	<p>KLF10 is a transcriptional repressor involved in the regulation of cell growth. KLF10 binds to the consensus sequence 5'-GGTGTG-3'.</p> <p>Alias Symbols: EGRA, TIEG, TIEG1</p> <p>Protein Interaction Partner: ZNF512B, CDK6, ITCH, UBC, SIAH1, TYK2, RPL14, LRRC75A-AS1, LENG1, SF3B3, BOP1, TNS1, PIGC, CRIP2, KDM5B, SP1, SIN3A,</p> <p>Protein Size: 480</p>
Molecular Weight:	53 kDa
Gene ID:	7071
NCBI Accession:	NM_005655 , NP_005646
UniProt:	Q13118
Pathways:	Stem Cell Maintenance

Application Details

Application Notes:	Optimal working dilutions should be determined experimentally by the investigator.
Comment:	Antigen size: 480 AA
Restrictions:	For Research Use only

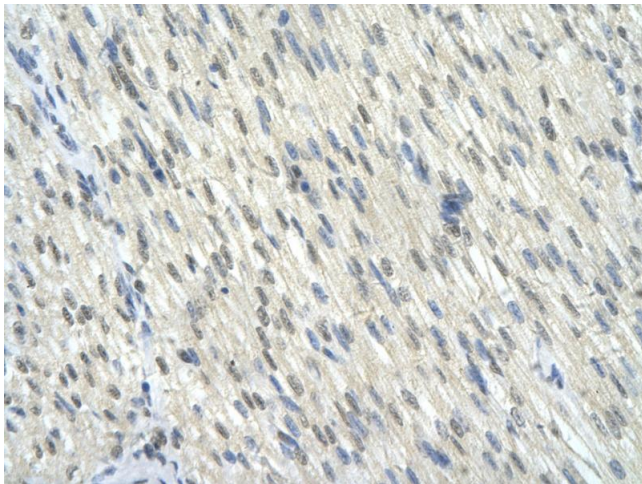
Handling

Format:	Liquid
Concentration:	Lot specific
Buffer:	Liquid. Purified antibody supplied in 1x PBS buffer with 0.09 % (w/v) sodium azide and 2 % sucrose.
Preservative:	Sodium azide
Precaution of Use:	This product contains Sodium azide: a POISONOUS AND HAZARDOUS SUBSTANCE which should be handled by trained staff only.
Handling Advice:	Avoid repeated freeze-thaw cycles.
Storage:	-20 °C
Storage Comment:	For short term use, store at 2-8°C up to 1 week. For long term storage, store at -20°C in small aliquots to prevent freeze-thaw cycles.



Western Blotting

Image 1. WB Suggested Anti-KLF10 Antibody Titration: 5.0ug/ml ELISA Titer: 1:1562500 Positive Control: Human Placenta



Immunohistochemistry

Image 2. Rabbit Anti-KLF10 antibody Paraffin Embedded Tissue: Human Heart cell Cellular Data: Epithelial cells of renal tubule Antibody Concentration: 4.0-8.0 ug/ml Magnification: 400X