

Datasheet for ABIN2780707
anti-TAF1C antibody (C-Term)[Go to Product page](#)

1 Image

1 Publication

Overview

Quantity:	100 µL
Target:	TAF1C
Binding Specificity:	C-Term
Reactivity:	Human
Host:	Rabbit
Clonality:	Polyclonal
Conjugate:	This TAF1C antibody is un-conjugated
Application:	Western Blotting (WB)

Product Details

Immunogen:	The immunogen is a synthetic peptide directed towards the C terminal region of human TAF1C
Sequence:	AKLPPQRDTP GCATTPPHSQ ASSVRATRSQ QHTPVLSSSQ PLRKKPRMGF
Predicted Reactivity:	Human: 100%
Characteristics:	This is a rabbit polyclonal antibody against TAF1C. It was validated on Western Blot using a cell lysate as a positive control.
Purification:	Protein A purified

Target Details

Target:	TAF1C
Alternative Name:	TAF1C (TAF1C Products)

Target Details

Background:	<p>Initiation of transcription by RNA polymerase I requires the formation of a complex composed of the TATA-binding protein (TBP) and three TBP-associated factors (TAFs) specific for RNA polymerase I. This complex, known as SL1, binds to the core promoter of ribosomal RNA genes to position the polymerase properly and acts as a channel for regulatory signals. TAF1C is the largest SL1-specific TAF.</p> <p>Alias Symbols: SL1, TAFI95, TAFI110, MGC:39976</p> <p>Protein Interaction Partner: UBC, Tbp, Taf1b, Taf1a, UFD1L, TTR, TK1, SMN1, H2AFX, TAF12, TAF1D, POLR1E, RRN3, TRIM24, TP53, UBTF, CD3EAP, MYC,</p> <p>Protein Size: 775</p>
Molecular Weight:	85 kDa
Gene ID:	9013
NCBI Accession:	NM_139353 , NP_647610

Application Details

Application Notes:	Optimal working dilutions should be determined experimentally by the investigator.
Comment:	Antigen size: 775 AA
Restrictions:	For Research Use only

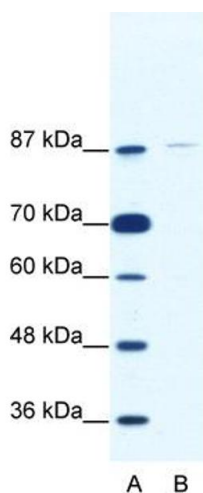
Handling

Format:	Liquid
Concentration:	Lot specific
Buffer:	Liquid. Purified antibody supplied in 1x PBS buffer with 0.09 % (w/v) sodium azide and 2 % sucrose.
Preservative:	Sodium azide
Precaution of Use:	This product contains Sodium azide: a POISONOUS AND HAZARDOUS SUBSTANCE which should be handled by trained staff only.
Handling Advice:	Avoid repeated freeze-thaw cycles.
Storage:	-20 °C
Storage Comment:	For short term use, store at 2-8°C up to 1 week. For long term storage, store at -20°C in small aliquots to prevent freeze-thaw cycles.

Publications

- Product cited in: Povlsen, Løfgren, Dalgas, Birkler, Johannsen, Støttrup, Bøtker: "Protection against myocardial ischemia-reperfusion injury at onset of type 2 diabetes in Zucker diabetic fatty rats is associated with altered glucose oxidation." in: **PLoS ONE**, Vol. 8, Issue 5, pp. e64093, (2013) ([PubMed](#)).
- Tsai, Hong, Liou, Liao: "Association study of GOT2 genetic polymorphisms and schizophrenia." in: **Psychiatric genetics**, Vol. 17, Issue 5, pp. 314, (2007) ([PubMed](#)).

Images



Western Blotting

Image 1. WB Suggested Anti-TAF1C Antibody Titration: 2.5ug/ml ELISA Titer: 1:12500 Positive Control: Jurkat cell lysate TAF1C is strongly supported by BioGPS gene expression data to be expressed in Human Jurkat cells