

Datasheet for ABIN2780710  
**anti-TSFM antibody (C-Term)**[Go to Product page](#)

## 2 Images

## Overview

Quantity:	100 µL
Target:	TSFM
Binding Specificity:	C-Term
Reactivity:	Human, Mouse, Rat, Rabbit, Cow, Dog, Guinea Pig, Horse
Host:	Rabbit
Clonality:	Polyclonal
Conjugate:	This TSFM antibody is un-conjugated
Application:	Western Blotting (WB)

## Product Details

Immunogen:	The immunogen is a synthetic peptide directed towards the C terminal region of human TSFM
Sequence:	VVGMAPLSVG SLDDEPGGEA ETKMLSQPYL LDPSITLGQY VQPQGVSVVD
Predicted Reactivity:	Cow: 100%, Dog: 100%, Guinea Pig: 100%, Horse: 100%, Human: 100%, Mouse: 92%, Rabbit: 100%, Rat: 93%
Characteristics:	This is a rabbit polyclonal antibody against TSFM. It was validated on Western Blot using a cell lysate as a positive control.
Purification:	Protein A purified

## Target Details

Target:	TSFM
---------	------

## Target Details

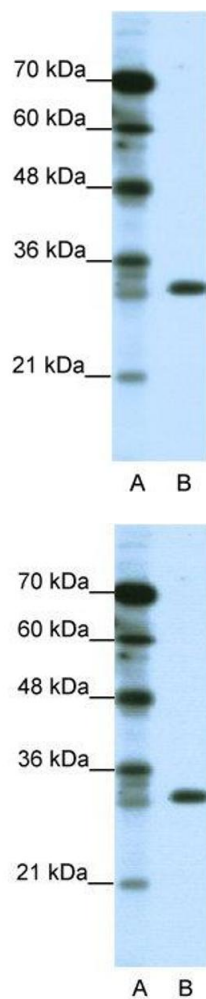
Alternative Name:	TSFM ( <a href="#">TSFM Products</a> )
Background:	<p>TSFM associates with the EF-Tu.GDP complex and induces the exchange of GDP to GTP. It remains bound to the aminoacyl-tRNA.EF-Tu.GTP complex up to the GTP hydrolysis stage on the ribosome. TSFM localizes in mitochondrion.</p> <p>Alias Symbols: EFTS, EFTSMT</p> <p>Protein Interaction Partner: UBC, SUMO2, LIG4, C1QBP, MRRF, ACOT13, CDV3, MTRNR2L1,</p> <p>Protein Size: 346</p>
Molecular Weight:	38 kDa
Gene ID:	10102
NCBI Accession:	<a href="#">NM_005726</a> , <a href="#">NP_005717</a>

## Application Details

Application Notes:	Optimal working dilutions should be determined experimentally by the investigator.
Comment:	Antigen size: 346 AA
Restrictions:	For Research Use only

## Handling

Format:	Liquid
Concentration:	Lot specific
Buffer:	Liquid. Purified antibody supplied in 1x PBS buffer with 0.09 % (w/v) sodium azide and 2 % sucrose.
Preservative:	Sodium azide
Precaution of Use:	This product contains Sodium azide: a POISONOUS AND HAZARDOUS SUBSTANCE which should be handled by trained staff only.
Handling Advice:	Avoid repeated freeze-thaw cycles.
Storage:	-20 °C
Storage Comment:	For short term use, store at 2-8°C up to 1 week. For long term storage, store at -20°C in small aliquots to prevent freeze-thaw cycles.



### Western Blotting

**Image 1.** WB Suggested Anti-TSFM Antibody Titration: 1.25ug/ml ELISA Titer: 1:312500 Positive Control: Jurkat cell lysate There is BioGPS gene expression data showing that TSFM is expressed in Jurkat

### Western Blotting

**Image 2.** WB Suggested Anti-TSFM Antibody Titration: 1.25  $\mu$ g/mL ELISA Titer: 1:312500 Positive Control: Jurkat cell lysate There is BioGPS gene expression data showing that TSFM is expressed in Jurkat