

Datasheet for ABIN2780714
anti-KAP1 antibody (C-Term)



[Go to Product page](#)

3 Images

Overview

Quantity:	100 µL
Target:	KAP1 (TRIM28)
Binding Specificity:	C-Term
Reactivity:	Human, Mouse, Rat, Dog, Rabbit, Cow, Horse, Guinea Pig
Host:	Rabbit
Clonality:	Polyclonal
Conjugate:	This KAP1 antibody is un-conjugated
Application:	Western Blotting (WB), Immunohistochemistry (IHC)

Product Details

Immunogen:	The immunogen is a synthetic peptide directed towards the C terminal region of human TRIM28
Sequence:	QFNKLTEDKA DVQSIIGLQR FFETRMNEAF GDTKFSAVLV EPPPMSLPGA
Predicted Reactivity:	Cow: 100%, Dog: 100%, Guinea Pig: 100%, Horse: 100%, Human: 100%, Mouse: 93%, Rabbit: 100%, Rat: 100%
Characteristics:	This is a rabbit polyclonal antibody against TRIM28. It was validated on Western Blot using a cell lysate as a positive control.
Purification:	Protein A purified

Target Details

Target:	KAP1 (TRIM28)
---------	---------------

Target Details

Alternative Name:	TRIM28 (TRIM28 Products)
Background:	<p>TRIM28 mediates transcriptional control by interaction with the Kruppel-associated box repression domain found in many transcription factors. TRIM28 localizes to the nucleus and is thought to associate with specific chromatin regions. It is a member of the tripartite motif family. This tripartite motif includes three zinc-binding domains, a RING,a B-box type 1 and a B-box type 2, and a coiled-coil region.</p> <p>Alias Symbols: KAP1, TF1B, RNF96, TIF1B</p> <p>Protein Interaction Partner: WWOX, ERLIN2, HUWE1, SUMO1, UBC, SPRTN, SENP7, HAUS2, MAGEC2, CBX5, WHSC1, UBE2I, AURKA, SUMO2, SUMO3, RNF4, CEP250, TRIM28, HIF1A, CHD3, ATM, ZNF350, STAU1, HIST3H3, LYN, NEDD8, MDM2, ZBTB1, RPA3, RPA2, RPA1, RNF2, SUZ12, EZH2, BMI1, EED, BRCC3, WRNIP1,</p> <p>Protein Size: 835</p>
Molecular Weight:	89 kDa
Gene ID:	10155
NCBI Accession:	NM_005762 , NP_005753
UniProt:	Q13263
Pathways:	Hedgehog Signaling , Positive Regulation of Response to DNA Damage Stimulus

Application Details

Application Notes:	Optimal working dilutions should be determined experimentally by the investigator.
Comment:	Antigen size: 835 AA
Restrictions:	For Research Use only

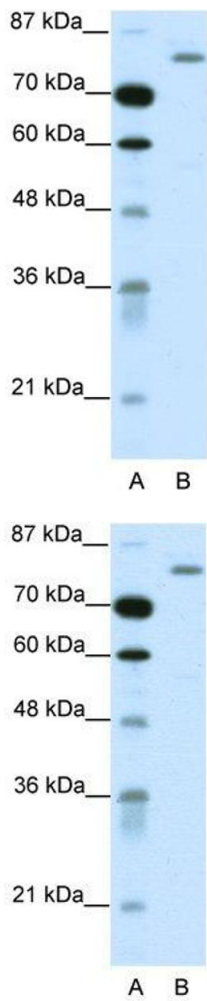
Handling

Format:	Liquid
Concentration:	Lot specific
Buffer:	Liquid. Purified antibody supplied in 1x PBS buffer with 0.09 % (w/v) sodium azide and 2 % sucrose.
Preservative:	Sodium azide
Precaution of Use:	This product contains Sodium azide: a POISONOUS AND HAZARDOUS SUBSTANCE which should be handled by trained staff only.

Handling

Handling Advice:	Avoid repeated freeze-thaw cycles.
Storage:	-20 °C
Storage Comment:	For short term use, store at 2-8°C up to 1 week. For long term storage, store at -20°C in small aliquots to prevent freeze-thaw cycles.

Images

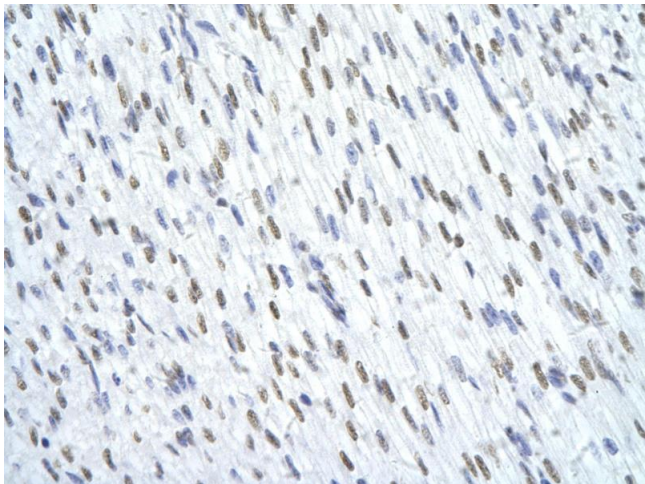


Western Blotting

Image 1. WB Suggested Anti-TRIM28 Antibody Titration: 1.25ug/ml ELISA Titer: 1:312500 Positive Control: HepG2 cell lysate TRIM28 is supported by BioGPS gene expression data to be expressed in HepG2

Western Blotting

Image 2. WB Suggested Anti-TRIM28 Antibody Titration: 1.25 µg/mL ELISA Titer: 1:312500 Positive Control: HepG2 cell lysate TRIM28 is supported by BioGPS gene expression data to be expressed in HepG2



Immunohistochemistry

Image 3. Rabbit Anti-TRIM28 antibody Paraffin Embedded
Tissue: Human Heart cell Cellular Data: Epithelial cells of
renal tubule Antibody Concentration: 4.0-8.0 ug/ml
Magnification: 400X