



[Go to Product page](#)

Datasheet for ABIN2780715
anti-RBM5 antibody (N-Term)

3 Images

Overview

Quantity:	100 µL
Target:	RBM5
Binding Specificity:	N-Term
Reactivity:	Human, Mouse, Rat, Cow, Dog, Horse, Rabbit, Guinea Pig, Saccharomyces cerevisiae
Host:	Rabbit
Clonality:	Polyclonal
Conjugate:	This RBM5 antibody is un-conjugated
Application:	Western Blotting (WB)

Product Details

Immunogen:	The immunogen is a synthetic peptide directed towards the N terminal region of human RBM5
Sequence:	GSDKRVS RTE RSGRYGSIID RDDRDERESR SRRRDSYKR SSDDRRGDRY
Predicted Reactivity:	Cow: 100%, Dog: 100%, Guinea Pig: 100%, Horse: 100%, Human: 100%, Mouse: 100%, Rabbit: 100%, Rat: 100%, Yeast: 80%
Characteristics:	This is a rabbit polyclonal antibody against RBM5. It was validated on Western Blot using a cell lysate as a positive control.
Purification:	Affinity Purified

Target Details

Target:	RBM5
---------	------

Target Details

Alternative Name: [RBM5 \(RBM5 Products\)](#)

Background: RBM5 is a component of the spliceosome A complex. It regulates alternative splicing of a number of mRNAs. RBM5 may modulate splice site pairing after recruitment of the U1 and U2 snRNPs to the 5' and 3' splice sites of the intron. RBM5 may both positively and negatively regulate apoptosis by regulating the alternative splicing of several genes involved in this process, including FAS and CASP2/caspase-2. In the case of FAS, promotes exclusion of exon 6 thereby producing a soluble form of FAS that inhibits apoptosis. In the case of CASP2/caspase-2, RBM5 promotes exclusion of exon 9 thereby producing a catalytically active form of CASP2/Caspase-2 that induces apoptosis.

Alias Symbols: FLJ39876, G15, H37, LUCA15, RMB5

Protein Interaction Partner: UBC, RNF2, SUZ12, WDR77, WBP11, LSM8, PRPF19, U2SURP, SNRNP200, U2AF2, PRPF8, ILF3, DHX15, LIG4, COPS5, SF3A2, SUMO2, GAPDH, BCL2L1, LRIF1,
Protein Size: 815

Molecular Weight: 92 kDa

Gene ID: 10181

NCBI Accession: [NM_005778, NP_005769](#)

UniProt: [P52756](#)

Pathways: [Ribonucleoprotein Complex Subunit Organization](#)

Application Details

Application Notes: Optimal working dilutions should be determined experimentally by the investigator.

Comment: Antigen size: 815 AA

Restrictions: For Research Use only

Handling

Format: Liquid

Concentration: Lot specific

Buffer: Liquid. Purified antibody supplied in 1x PBS buffer with 0.09 % (w/v) sodium azide and 2 % sucrose.

Preservative: Sodium azide

Precaution of Use: This product contains Sodium azide: a POISONOUS AND HAZARDOUS SUBSTANCE which

Handling

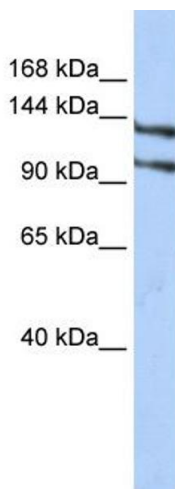
should be handled by trained staff only.

Handling Advice: Avoid repeated freeze-thaw cycles.

Storage: -20 °C

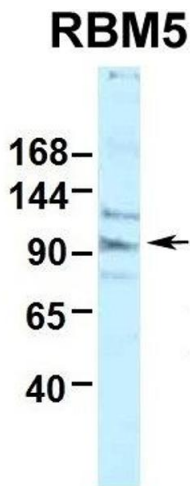
Storage Comment: For short term use, store at 2-8°C up to 1 week. For long term storage, store at -20°C in small aliquots to prevent freeze-thaw cycles.

Images



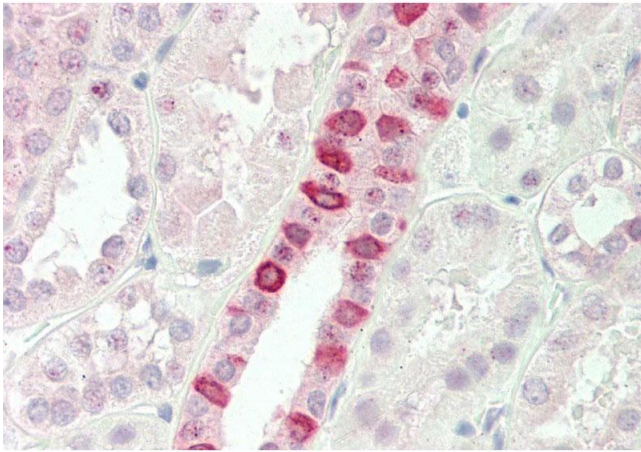
Western Blotting

Image 1. WB Suggested Anti-RBM5 Antibody Titration: 0.2-1 ug/ml ELISA Titer: 1:312500 Positive Control: HepG2 cell lysate RBM5 is strongly supported by BioGPS gene expression data to be expressed in Human HepG2 cells



Western Blotting

Image 2. Human HepG2



Immunohistochemistry

Image 3. Rabbit Anti-RBM5 antibody Formalin Fixed Paraffin Embedded Tissue: Human Kidney Primary antibody Concentration: 1:100 Secondary Antibody: Donkey anti-Rabbit-Cy3 Secondary Antibody Concentration: 1:200 Magnification: 20x Exposure Time: 0.5-2.0sec