

Datasheet for ABIN2780723
anti-MEF2B antibody (N-Term)[Go to Product page](#)

1 Image

1 Publication

Overview

Quantity:	100 µL
Target:	MEF2B
Binding Specificity:	N-Term
Reactivity:	Human, Mouse, Rat, Cow, Dog, Horse, Pig, Zebrafish (Danio rerio), Guinea Pig, Rabbit, Sheep
Host:	Rabbit
Clonality:	Polyclonal
Conjugate:	This MEF2B antibody is un-conjugated
Application:	Western Blotting (WB)

Product Details

Immunogen:	The immunogen is a synthetic peptide directed towards the N terminal region of human MEF2B
Sequence:	MGRKKIQISR ILQQRNRQVT FTKRKFGMLK KAYELSVLCD CEIALIIFNS
Predicted Reactivity:	Cow: 100%, Dog: 100%, Guinea Pig: 79%, Horse: 100%, Human: 100%, Mouse: 100%, Pig: 100%, Rabbit: 79%, Rat: 100%, Sheep: 79%, Zebrafish: 100%
Characteristics:	This is a rabbit polyclonal antibody against MEF2B. It was validated on Western Blot using a cell lysate as a positive control.
Purification:	Affinity Purified

Target Details

Target:	MEF2B
---------	-------

Target Details

Alternative Name:	MEF2B (MEF2B Products)
Background:	<p>This gene represents numerous read-through transcripts that span geneID:729991 and 100271849. Many read-through transcripts are predicted to be nonsense-mediated decay (NMD) candidates, and are thought to be non-coding. Some transcripts are predicted to be capable of translation reinitiation at a downstream AUG, resulting in expression of at least one isoform of myocyte enhancer factor 2B (MEF2B) from this read-through locus.</p> <p>Alias Symbols: FLJ32599, FLJ46391, RSRFR2, MEF2B, LOC729991-MEF2B</p> <p>Protein Interaction Partner: TEX11, CABIN1, UBC,</p> <p>Protein Size: 365</p>
Molecular Weight:	39 kDa
Gene ID:	4207
NCBI Accession:	NM_005919 , NP_005910
UniProt:	Q02080

Application Details

Application Notes:	Optimal working dilutions should be determined experimentally by the investigator.
Comment:	Antigen size: 365 AA
Restrictions:	For Research Use only

Handling

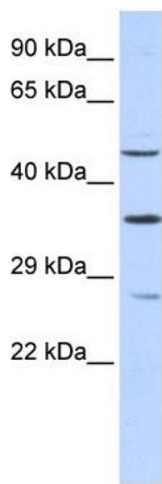
Format:	Liquid
Concentration:	Lot specific
Buffer:	Liquid. Purified antibody supplied in 1x PBS buffer with 0.09 % (w/v) sodium azide and 2 % sucrose.
Preservative:	Sodium azide
Precaution of Use:	This product contains Sodium azide: a POISONOUS AND HAZARDOUS SUBSTANCE which should be handled by trained staff only.
Handling Advice:	Avoid repeated freeze-thaw cycles.
Storage:	-20 °C
Storage Comment:	For short term use, store at 2-8°C up to 1 week. For long term storage, store at -20°C in small

aliquots to prevent freeze-thaw cycles.

Publications

Product cited in: Hayashi, Gekka, Goto-Omoto, Takeuchi, Kubo, Kitahara: "Novel NR2E3 mutations (R104Q, R334G) associated with a mild form of enhanced S-cone syndrome demonstrate compound heterozygosity." in: **Ophthalmology**, Vol. 112, Issue 12, pp. 2115, (2005) ([PubMed](#)).

Images



Western Blotting

Image 1. WB Suggested Anti-MEF2B Antibody Titration: 0.2-1 ug/ml ELISA Titer: 1:62500 Positive Control: 293T cell lysate