



[Go to Product page](#)

Datasheet for ABIN2780729
anti-NAB1 antibody (C-Term)

1 Image

Overview

Quantity:	100 µL
Target:	NAB1
Binding Specificity:	C-Term
Reactivity:	Human, Rat, Mouse, Cow, Dog, Guinea Pig, Horse, Rabbit, Zebrafish (Danio rerio)
Host:	Rabbit
Clonality:	Polyclonal
Conjugate:	This NAB1 antibody is un-conjugated
Application:	Western Blotting (WB)

Product Details

Immunogen:	The immunogen is a synthetic peptide directed towards the C terminal region of human NAB1
Sequence:	VVDGELSRLY PSEAKSHSSE SLGILKDYPH SAFTLEKKVI KTEPEDSR
Predicted Reactivity:	Cow: 100%, Dog: 100%, Guinea Pig: 100%, Horse: 100%, Human: 100%, Mouse: 100%, Rabbit: 100%, Rat: 100%, Zebrafish: 85%
Characteristics:	This is a rabbit polyclonal antibody against NAB1. It was validated on Western Blot using a cell lysate as a positive control.
Purification:	Affinity Purified

Target Details

Target:	NAB1
---------	------

Target Details

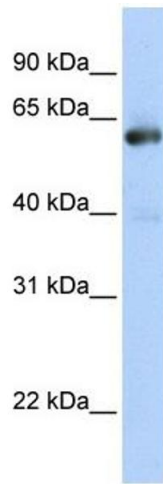
Alternative Name:	NAB1 (NAB1 Products)
Background:	NAB1 belongs to the NAB family and acts as a transcriptional repressor for zinc finger transcription factors EGR1 and EGR2. Alias Symbols: - Protein Interaction Partner: ELAVL1, SUMO2, CHD4, POU2AF1, EGR1, Protein Size: 487
Molecular Weight:	54 kDa
Gene ID:	4664
NCBI Accession:	NM_005966 , NP_005957
UniProt:	Q13506

Application Details

Application Notes:	Optimal working dilutions should be determined experimentally by the investigator.
Comment:	Antigen size: 487 AA
Restrictions:	For Research Use only

Handling

Format:	Liquid
Concentration:	Lot specific
Buffer:	Liquid. Purified antibody supplied in 1x PBS buffer with 0.09 % (w/v) sodium azide and 2 % sucrose.
Preservative:	Sodium azide
Precaution of Use:	This product contains Sodium azide: a POISONOUS AND HAZARDOUS SUBSTANCE which should be handled by trained staff only.
Handling Advice:	Avoid repeated freeze-thaw cycles.
Storage:	-20 °C
Storage Comment:	For short term use, store at 2-8°C up to 1 week. For long term storage, store at -20°C in small aliquots to prevent freeze-thaw cycles.



Western Blotting

Image 1. WB Suggested Anti-NAB1 Antibody Titration: 0.2-1 ug/ml ELISA Titer: 1:312500 Positive Control: Transfected 293T