

Datasheet for ABIN2780734  
**anti-SOX1 antibody (N-Term)**



[Go to Product page](#)

2 Images

### Overview

Quantity:	100 µL
Target:	SOX1
Binding Specificity:	N-Term
Reactivity:	Human, Mouse, Rabbit, Zebrafish (Danio rerio), Cow, Dog, Rat, Guinea Pig, Horse
Host:	Rabbit
Clonality:	Polyclonal
Conjugate:	This SOX1 antibody is un-conjugated
Application:	Western Blotting (WB)

### Product Details

Immunogen:	The immunogen is a synthetic peptide directed towards the N terminal region of human SOX1
Sequence:	GGGAKANQDR VKRPMNAFMV WSRGQRRKMA QENPKMHNSE ISKRLGAEWK
Predicted Reactivity:	Cow: 100%, Dog: 93%, Guinea Pig: 100%, Horse: 100%, Human: 100%, Mouse: 100%, Rabbit: 93%, Rat: 100%, Zebrafish: 100%
Characteristics:	This is a rabbit polyclonal antibody against SOX1. It was validated on Western Blot.
Purification:	Affinity Purified

### Target Details

Target:	SOX1
Alternative Name:	SOX1 ( <a href="#">SOX1 Products</a> )

## Target Details

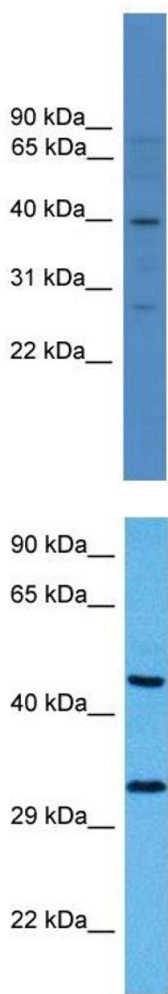
Background:	SOX1 is a member of the SOX (SRY-related HMG-box) family of transcription factors involved in the regulation of embryonic development and in the determination of the cell fate. SOX1 may act as a transcriptional activator after forming a protein complex with other proteins. In mice, a similar protein regulates the gamma-crystallin genes and is essential for lens development.  Alias Symbols: -  Protein Interaction Partner: CTNNB1,  Protein Size: 391
Molecular Weight:	39 kDa
Gene ID:	6656
NCBI Accession:	<a href="#">NM_005986</a> , <a href="#">NP_005977</a>
UniProt:	<a href="#">O00570</a>

## Application Details

Application Notes:	Optimal working dilutions should be determined experimentally by the investigator.
Comment:	Antigen size: 391 AA
Restrictions:	For Research Use only

## Handling

Format:	Liquid
Concentration:	Lot specific
Buffer:	Liquid. Purified antibody supplied in 1x PBS buffer with 0.09 % (w/v) sodium azide and 2 % sucrose.
Preservative:	Sodium azide
Precaution of Use:	This product contains Sodium azide: a POISONOUS AND HAZARDOUS SUBSTANCE which should be handled by trained staff only.
Handling Advice:	Avoid repeated freeze-thaw cycles.
Storage:	-20 °C
Storage Comment:	For short term use, store at 2-8°C up to 1 week. For long term storage, store at -20°C in small aliquots to prevent freeze-thaw cycles.



Western Blotting

**Image 1.** WB Suggested Anti-SOX1 Antibody Titration: 0.2-1 ug/ml ELISA Titer: 1:1562500 Positive Control: 293T cell lysate

Western Blotting

**Image 2.** Host: Mouse Target Name: SOX1 Sample Tissue: Mouse Pancreas Antibody Dilution: 1ug/ml