

Datasheet for ABIN2780735  
**anti-SOX1 antibody (Middle Region)**



[Go to Product page](#)

2 Images

### Overview

Quantity:	100 µL
Target:	SOX1
Binding Specificity:	Middle Region
Reactivity:	Human, Mouse, Rabbit, Zebrafish (Danio rerio), Cow, Dog, Guinea Pig
Host:	Rabbit
Clonality:	Polyclonal
Conjugate:	This SOX1 antibody is un-conjugated
Application:	Western Blotting (WB)

### Product Details

Immunogen:	The immunogen is a synthetic peptide directed towards the middle region of human SOX1
Sequence:	REMISMYLPA GEGGDPAAAA AAAAQSLHS LPQHYQGAGA GVNGTVPLTH
Predicted Reactivity:	Cow: 93%, Dog: 100%, Guinea Pig: 79%, Human: 100%, Mouse: 100%, Rabbit: 100%, Zebrafish: 92%
Characteristics:	This is a rabbit polyclonal antibody against SOX1. It was validated on Western Blot using a cell lysate as a positive control.
Purification:	Affinity Purified

### Target Details

Target:	SOX1
---------	------

## Target Details

Alternative Name:	SOX1 ( <a href="#">SOX1 Products</a> )
Background:	<p>SOX1 is a member of the SOX (SRY-related HMG-box) family of transcription factors involved in the regulation of embryonic development and in the determination of the cell fate. SOX1 may act as a transcriptional activator after forming a protein complex with other proteins. In mice, a similar protein regulates the gamma-crystallin genes and is essential for lens development. This intronless gene encodes a member of the SOX (SRY-related HMG-box) family of transcription factors involved in the regulation of embryonic development and in the determination of the cell fate. The encoded protein may act as a transcriptional activator after forming a protein complex with other proteins. In mice, a similar protein regulates the gamma-crystallin genes and is essential for lens development.</p> <p>Alias Symbols: -</p> <p>Protein Interaction Partner: CTNNB1,</p> <p>Protein Size: 391</p>

Molecular Weight:	39 kDa
Gene ID:	6656
NCBI Accession:	<a href="#">NM_005986</a> , <a href="#">NP_005977</a>
UniProt:	<a href="#">O00570</a>

## Application Details

Application Notes:	Optimal working dilutions should be determined experimentally by the investigator.
Comment:	Antigen size: 391 AA
Restrictions:	For Research Use only

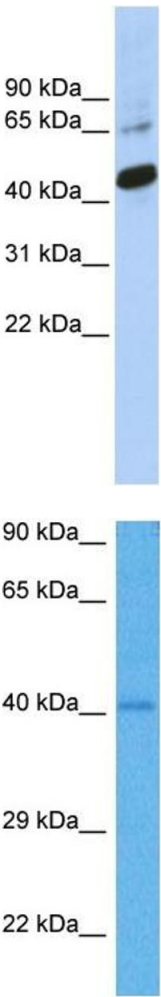
## Handling

Format:	Liquid
Concentration:	Lot specific
Buffer:	Liquid. Purified antibody supplied in 1x PBS buffer with 0.09 % (w/v) sodium azide and 2 % sucrose.
Preservative:	Sodium azide
Precaution of Use:	This product contains Sodium azide: a POISONOUS AND HAZARDOUS SUBSTANCE which should be handled by trained staff only.

Handling

Handling Advice:	Avoid repeated freeze-thaw cycles.
Storage:	-20 °C
Storage Comment:	For short term use, store at 2-8°C up to 1 week. For long term storage, store at -20°C in small aliquots to prevent freeze-thaw cycles.

Images



**Western Blotting**

**Image 1.** WB Suggested Anti-SOX1 Antibody Titration: 0.2-1 ug/ml ELISA Titer: 1:1562500 Positive Control: Jurkat cell lysate

**Western Blotting**

**Image 2.** Host: Rabbit Target Name: SOX1 Sample Tissue: Mouse Heart Antibody Dilution: 1ug/ml