

Datasheet for ABIN2780740

**anti-Kelch-like protein 41 (KLHL41) (N-Term) antibody**[Go to Product page](#)**1** Image**1** Publication

## Overview

Quantity:	100 µL
Target:	Kelch-like protein 41 (KLHL41)
Binding Specificity:	N-Term
Reactivity:	Human, Mouse, Rat, Cow, Dog, Rabbit, Horse, Guinea Pig
Host:	Rabbit
Clonality:	Polyclonal
Conjugate:	Un-conjugated
Application:	Western Blotting (WB)

## Product Details

Immunogen:	The immunogen is a synthetic peptide directed towards the N terminal region of human KBTBD10
Sequence:	MDSQRELAEE LRLYQSTLLQ DGLKDLLDEK KFIDCTLKAG DKSLPCHRLI
Predicted Reactivity:	Cow: 100%, Dog: 93%, Guinea Pig: 100%, Horse: 100%, Human: 100%, Mouse: 100%, Rabbit: 100%, Rat: 100%
Characteristics:	This is a rabbit polyclonal antibody against KBTBD10. It was validated on Western Blot using a cell lysate as a positive control.
Purification:	Protein A purified

## Target Details

Target:	Kelch-like protein 41 (KLHL41)
---------	--------------------------------

## Target Details

Alternative Name:	KBTBD10 ( <a href="#">KLHL41 Products</a> )
Background:	<p>KBTBD10 contains 1 BTB (POZ) domain and is required for pseudopod elongation in transformed cells. KBTBD10 mRNA is up-regulated by less than two folds in the heart in human patients with HCM.</p> <p>Alias Symbols: SARCOSIN, KBTBD10</p> <p>Protein Interaction Partner: RCHY1, SLC2A4, UBC, RBX1, CUL3, NRAP,</p> <p>Protein Size: 606</p>
Molecular Weight:	68 kDa
Gene ID:	10324
NCBI Accession:	<a href="#">NM_006063</a> , <a href="#">NP_006054</a>
UniProt:	<a href="#">O60662</a>

## Application Details

Application Notes:	Optimal working dilutions should be determined experimentally by the investigator.
Comment:	Antigen size: 606 AA
Restrictions:	For Research Use only

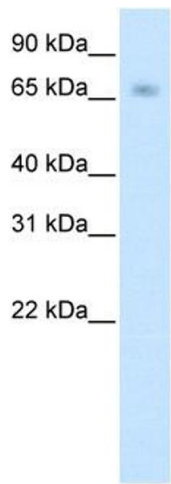
## Handling

Format:	Liquid
Concentration:	Lot specific
Buffer:	Liquid. Purified antibody supplied in 1x PBS buffer with 0.09 % (w/v) sodium azide and 2 % sucrose.
Preservative:	Sodium azide
Precaution of Use:	This product contains Sodium azide: a POISONOUS AND HAZARDOUS SUBSTANCE which should be handled by trained staff only.
Handling Advice:	Avoid repeated freeze-thaw cycles.
Storage:	-20 °C
Storage Comment:	For short term use, store at 2-8°C up to 1 week. For long term storage, store at -20°C in small aliquots to prevent freeze-thaw cycles.

Publications

Product cited in: Hayashi, Gekka, Goto-Omoto, Takeuchi, Kubo, Kitahara: "Novel NR2E3 mutations (R104Q, R334G) associated with a mild form of enhanced S-cone syndrome demonstrate compound heterozygosity." in: **Ophthalmology**, Vol. 112, Issue 12, pp. 2115, (2005) ([PubMed](#)).

Images



**Western Blotting**

**Image 1.** WB Suggested Anti-KBTBD10 Antibody Titration: 0.625ug/ml ELISA Titer: 1:1562500 Positive Control: Human Muscle