

Datasheet for ABIN2780754
anti-PEG3 antibody (C-Term)[Go to Product page](#)

2 Images

Overview

Quantity:	100 µL
Target:	PEG3
Binding Specificity:	C-Term
Reactivity:	Human, Mouse, Rat, Cow, Dog, Horse, Pig, Rabbit
Host:	Rabbit
Clonality:	Polyclonal
Conjugate:	This PEG3 antibody is un-conjugated
Application:	Western Blotting (WB)

Product Details

Immunogen:	The immunogen is a synthetic peptide directed towards the C terminal region of human PEG3
Sequence:	FGECSGYIER ASTSTGGANQ ADEKYFKCDV CGQLFNDRLS LARHQNTHTG
Predicted Reactivity:	Cow: 100%, Dog: 100%, Horse: 100%, Human: 100%, Mouse: 93%, Pig: 100%, Rabbit: 100%, Rat: 93%
Characteristics:	This is a rabbit polyclonal antibody against PEG3. It was validated on Western Blot using a cell lysate as a positive control.
Purification:	Affinity Purified

Target Details

Target:	PEG3
---------	------

Target Details

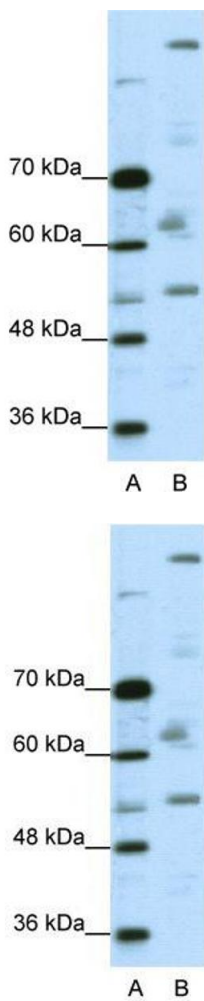
Alternative Name:	PEG3 (PEG3 Products)
Background:	<p>PEG3 induces apoptosis in cooperation with SIAH1A and acts as a mediator between TP53/p53 and BAX in a neuronal death pathway that is activated by DNA damage. PEG3 acts synergistically with TRAF2 and inhibits TNF induced apoptosis through activation of NF-kappa-B. PEG3 also possesses a tumor suppressing activity in glioma cells.</p> <p>Alias Symbols: PW1, ZNF904, ZSCAN24</p> <p>Protein Interaction Partner: PEG3, ALB, USP7, TRAF2, SIAH2, SIAH1, BRCA1,</p> <p>Protein Size: 1588</p>
Molecular Weight:	181 kDa
Gene ID:	5178
NCBI Accession:	NM_006210 , NP_006201
UniProt:	Q9GZU2

Application Details

Application Notes:	Optimal working dilutions should be determined experimentally by the investigator.
Comment:	Antigen size: 1588 AA
Restrictions:	For Research Use only

Handling

Format:	Liquid
Concentration:	Lot specific
Buffer:	Liquid. Purified antibody supplied in 1x PBS buffer with 0.09 % (w/v) sodium azide and 2 % sucrose.
Preservative:	Sodium azide
Precaution of Use:	This product contains Sodium azide: a POISONOUS AND HAZARDOUS SUBSTANCE which should be handled by trained staff only.
Handling Advice:	Avoid repeated freeze-thaw cycles.
Storage:	-20 °C
Storage Comment:	For short term use, store at 2-8°C up to 1 week. For long term storage, store at -20°C in small aliquots to prevent freeze-thaw cycles.



Western Blotting

Image 1. WB Suggested Anti-PEG3 Antibody Titration: 0.2-1 ug/ml ELISA Titer: 1:312500 Positive Control: A204 cell lysate PEG3 is strongly supported by BioGPS gene expression data to be expressed in Human A204 cells

Western Blotting

Image 2. WB Suggested Anti-PEG3 Antibody Titration: 0.2-1 µg/mL ELISA Titer: 1:12500 Positive Control: A204 cell lysate PEG3 is strongly supported by BioGPS gene expression data to be expressed in Human A204 cells