

Datasheet for ABIN2780755
anti-POLR2I antibody (N-Term)[Go to Product page](#)

1 Image

Overview

Quantity:	100 µL
Target:	POLR2I
Binding Specificity:	N-Term
Reactivity:	Human, Mouse, Rat, Dog, Rabbit, Cow, Guinea Pig, Horse, Zebrafish (Danio rerio), Saccharomyces cerevisiae, Goat
Host:	Rabbit
Clonality:	Polyclonal
Conjugate:	This POLR2I antibody is un-conjugated
Application:	Western Blotting (WB)

Product Details

Immunogen:	The immunogen is a synthetic peptide directed towards the N terminal region of human POLR2I
Sequence:	EPDGTYPESGF VGIRFCQECN NMLYPKEDKE NRILLYACRN CDYQQEADNS
Predicted Reactivity:	Cow: 100%, Dog: 100%, Goat: 83%, Guinea Pig: 100%, Horse: 100%, Human: 100%, Mouse: 100%, Rabbit: 100%, Rat: 100%, Yeast: 100%, Zebrafish: 100%
Characteristics:	This is a rabbit polyclonal antibody against POLR2I. It was validated on Western Blot using a cell lysate as a positive control.
Purification:	Affinity Purified

Target Details

Target:	POLR2I
---------	--------

Target Details

Alternative Name:	POLR2I (POLR2I Products)
Background:	<p>POLR2I is a subunit of RNA polymerase II, the polymerase responsible for synthesizing messenger RNA in eukaryotes. This subunit, in combination with two other polymerase subunits, forms the DNA binding domain of the polymerase, a groove in which the DNA template is transcribed into RNA. POLR2I has two zinc finger motifs with conserved cysteines and the subunit does possess zinc binding activity. This gene encodes a subunit of RNA polymerase II, the polymerase responsible for synthesizing messenger RNA in eukaryotes. This subunit, in combination with two other polymerase subunits, forms the DNA binding domain of the polymerase, a groove in which the DNA template is transcribed into RNA. The product of this gene has two zinc finger motifs with conserved cysteines and the subunit does possess zinc binding activity. Publication Note: This RefSeq record includes a subset of the publications that are available for this gene. Please see the Entrez Gene record to access additional publications.</p> <p>Alias Symbols: RPB9, hRPB14.5</p> <p>Protein Interaction Partner: ESR1, TCEB3, SRC, PSMB9, UBC, MED19, MED26, RECQL5, TBCD, BRCA1, CPSF6, POLR2E, POLR2D, POLR2C, POLR2B, POLR2A, DCUN1D1, CUL5, MYC, tat, WDR48, POLR2H, MED10, MED29,</p> <p>Protein Size: 125</p>
Molecular Weight:	14 kDa
Gene ID:	5438
NCBI Accession:	NM_006233 , NP_006224
UniProt:	P36954
Pathways:	Regulatory RNA Pathways

Application Details

Application Notes:	Optimal working dilutions should be determined experimentally by the investigator.
Comment:	Antigen size: 125 AA
Restrictions:	For Research Use only

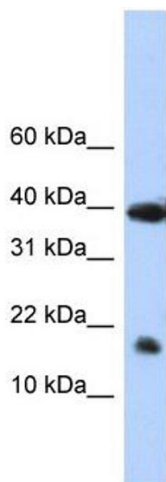
Handling

Format:	Liquid
Concentration:	Lot specific

Handling

Buffer:	Liquid. Purified antibody supplied in 1x PBS buffer with 0.09 % (w/v) sodium azide and 2 % sucrose.
Preservative:	Sodium azide
Precaution of Use:	This product contains Sodium azide: a POISONOUS AND HAZARDOUS SUBSTANCE which should be handled by trained staff only.
Handling Advice:	Avoid repeated freeze-thaw cycles.
Storage:	-20 °C
Storage Comment:	For short term use, store at 2-8°C up to 1 week. For long term storage, store at -20°C in small aliquots to prevent freeze-thaw cycles.

Images



Western Blotting

Image 1. WB Suggested Anti-POLR2I Antibody Titration: 0.2-1 ug/ml Positive Control: Human Placenta