

Datasheet for ABIN2780771
anti-CREB3 antibody (Middle Region)[Go to Product page](#)

1 Image

1 Publication

Overview

Quantity:	100 µL
Target:	CREB3
Binding Specificity:	Middle Region
Reactivity:	Human, Cow, Dog
Host:	Rabbit
Clonality:	Polyclonal
Conjugate:	This CREB3 antibody is un-conjugated
Application:	Western Blotting (WB)

Product Details

Immunogen:	The immunogen is a synthetic peptide directed towards the middle region of human CREB3
Sequence:	PPLEWPFDDL FSEPLCRGPI LPLQANLTRK GGWLPTGSPS VILQDRYSG
Predicted Reactivity:	Cow: 80%, Dog: 80%, Human: 100%
Characteristics:	This is a rabbit polyclonal antibody against CREB3. It was validated on Western Blot using a cell lysate as a positive control.
Purification:	Affinity Purified

Target Details

Target:	CREB3
Alternative Name:	CREB3 (CREB3 Products)

Target Details

Background: CREB3 is a transcription factor that is a member of the leucine zipper family of DNA binding proteins. This protein binds to the cAMP-responsive element, an octameric palindrome. The protein interacts with host cell factor C1, which also associates with the herpes simplex virus (HSV) protein VP16 that induces transcription of HSV immediate-early genes. This protein and VP16 both bind to the same site on host cell factor C1. It is thought that the interaction between this protein and host cell factor C1 plays a role in the establishment of latency during HSV infection. An additional transcript variant has been identified, but its biological validity has not been determined. This gene encodes a transcription factor that is a member of the leucine zipper family of DNA binding proteins. This protein binds to the cAMP-responsive element, an octameric palindrome. The protein interacts with host cell factor C1, which also associates with the herpes simplex virus (HSV) protein VP16 that induces transcription of HSV immediate-early genes. This protein and VP16 both bind to the same site on host cell factor C1. It is thought that the interaction between this protein and host cell factor C1 plays a role in the establishment of latency during HSV infection. An additional transcript variant has been identified, but its biological validity has not been determined. Publication Note: This RefSeq record includes a subset of the publications that are available for this gene. Please see the Entrez Gene record to access additional publications.

Alias Symbols: LUMAN, LZIP, MGC15333, MGC19782

Protein Interaction Partner: COPS5, HCFC1, JUN, CREB3L1, CREB3L3, CREB3, NFE2L3, NFE2L2, DDIT3, CEBPG, ATF4, ATF3, TTLL5, RRAS2, OS9, RABAC1, SQLE, BCAT2, CLP1, UBC, HDAC3, MALL, NFIL3, APPBP2, STX8, BNIP2, CCR1, EMD,

Protein Size: 371

Molecular Weight: 41 kDa

Gene ID: 10488

NCBI Accession: [NM_006368](#), [NP_006359](#)

UniProt: [O43889](#)

Pathways: [Thyroid Hormone Synthesis](#), [Myometrial Relaxation and Contraction](#), [ER-Nucleus Signaling](#), [Maintenance of Protein Location](#), [Unfolded Protein Response](#)

Application Details

Application Notes: Optimal working dilutions should be determined experimentally by the investigator.

Comment: Antigen size: 371 AA

Restrictions: For Research Use only

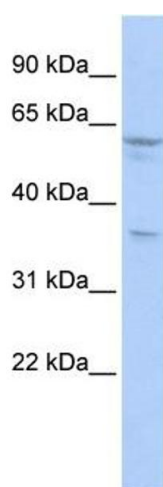
Handling

Format:	Liquid
Concentration:	Lot specific
Buffer:	Liquid. Purified antibody supplied in 1x PBS buffer with 0.09 % (w/v) sodium azide and 2 % sucrose.
Preservative:	Sodium azide
Precaution of Use:	This product contains Sodium azide: a POISONOUS AND HAZARDOUS SUBSTANCE which should be handled by trained staff only.
Handling Advice:	Avoid repeated freeze-thaw cycles.
Storage:	-20 °C
Storage Comment:	For short term use, store at 2-8°C up to 1 week. For long term storage, store at -20°C in small aliquots to prevent freeze-thaw cycles.

Publications

Product cited in:	Libby, Bales, Orlicky, McManaman: "Perilipin-2 Deletion Impairs Hepatic Lipid Accumulation by Interfering with Sterol Regulatory Element-binding Protein (SREBP) Activation and Altering the Hepatic Lipidome." in: The Journal of biological chemistry , Vol. 291, Issue 46, pp. 24231-24246 , (2016) (PubMed).
-------------------	---

Images



Western Blotting

Image 1. WB Suggested Anti-CREB3 Antibody Titration: 0.2-1 ug/ml ELISA Titer: 1:312500 Positive Control: HepG2 cell lysate