

Datasheet for ABIN2780782  
**anti-ERF antibody (N-Term)**

## 2 Images

[Go to Product page](#)

## Overview

Quantity:	100 µL
Target:	ERF
Binding Specificity:	N-Term
Reactivity:	Human, Mouse, Rat, Cow, Dog, Horse, Rabbit, Zebrafish (Danio rerio), Guinea Pig
Host:	Rabbit
Clonality:	Polyclonal
Conjugate:	This ERF antibody is un-conjugated
Application:	Western Blotting (WB), Immunohistochemistry (IHC)

## Product Details

Immunogen:	The immunogen is a synthetic peptide directed towards the N terminal region of human ERF
Sequence:	MKTPADTGFA FPDWAYKPES SPGSRQQLW HFILELLRKE EYQGVIAWQG
Predicted Reactivity:	Cow: 100%, Dog: 100%, Guinea Pig: 100%, Horse: 100%, Human: 100%, Mouse: 100%, Rabbit: 93%, Rat: 100%, Zebrafish: 100%
Characteristics:	This is a rabbit polyclonal antibody against ERF. It was validated on Western Blot using a cell lysate as a positive control.
Purification:	Affinity Purified

## Target Details

Target:	ERF
---------	-----

## Target Details

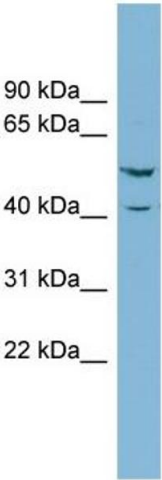
Alternative Name:	ERF ( <a href="#">ERF Products</a> )
Background:	<p>Members of the ETS family of transcription factors, such as ERF, regulate cell proliferation and differentiation. They share a highly conserved DNA-binding domain, the ETS domain, that recognizes the sequence GGAA/T.</p> <p>Alias Symbols: PE-2, PE2</p> <p>Protein Interaction Partner: UBC, PAXIP1, SUMO2, XPO1, EPHB2, CSNK1A1, MAPK1, HMGB1,</p> <p>Protein Size: 548</p>
Molecular Weight:	59 kDa
Gene ID:	2077
NCBI Accession:	<a href="#">NM_006494</a> , <a href="#">NP_006485</a>
UniProt:	<a href="#">P50548</a>

## Application Details

Application Notes:	Optimal working dilutions should be determined experimentally by the investigator.
Comment:	Antigen size: 548 AA
Restrictions:	For Research Use only

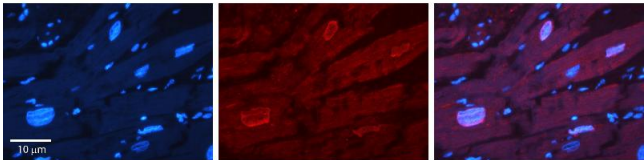
## Handling

Format:	Liquid
Concentration:	Lot specific
Buffer:	Liquid. Purified antibody supplied in 1x PBS buffer with 0.09 % (w/v) sodium azide and 2 % sucrose.
Preservative:	Sodium azide
Precaution of Use:	This product contains Sodium azide: a POISONOUS AND HAZARDOUS SUBSTANCE which should be handled by trained staff only.
Handling Advice:	Avoid repeated freeze-thaw cycles.
Storage:	-20 °C
Storage Comment:	For short term use, store at 2-8°C up to 1 week. For long term storage, store at -20°C in small aliquots to prevent freeze-thaw cycles.



Western Blotting

**Image 1.** WB Suggested Anti-ERF Antibody Titration: 0.2-1 ug/ml ELISA Titer: 1:1562500 Positive Control: OVCAR-3 cell lysate



Immunohistochemistry

**Image 2.** Rabbit Anti-ERF Antibody Formalin Fixed Paraffin Embedded Tissue: Human heart Tissue Observed Staining: Nucleus Primary Antibody Concentration: 1:100 Other Working Concentrations: 1:600 Secondary Antibody: Donkey anti-Rabbit-Cy3 Secondary Antibody Concentration: 1:200 Magnification: 20X Exposure Time: 0.5 - 2.0 sec