



[Go to Product page](#)

Datasheet for ABIN2780786
anti-TFEB antibody (C-Term)

2 Images

Overview

Quantity:	100 µL
Target:	TFEB
Binding Specificity:	C-Term
Reactivity:	Human, Mouse, Rat, Dog, Cow, Horse, Goat, Rabbit, Guinea Pig, Saccharomyces cerevisiae, Sheep, Zebrafish (Danio rerio)
Host:	Rabbit
Clonality:	Polyclonal
Conjugate:	This TFEB antibody is un-conjugated
Application:	Western Blotting (WB)

Product Details

Immunogen:	The immunogen is a synthetic peptide directed towards the C terminal region of human TFEB
Sequence:	SLSKKDL DLM LLDDSL LPLA SDPLLSTMSP EASKASSRRS SFSMEEGDVL
Predicted Reactivity:	Cow: 100%, Dog: 100%, Goat: 92%, Guinea Pig: 100%, Horse: 100%, Human: 100%, Mouse: 100%, Rabbit: 100%, Rat: 100%, Sheep: 85%, Yeast: 100%, Zebrafish: 91%
Characteristics:	This is a rabbit polyclonal antibody against TFEB. It was validated on Western Blot using a cell lysate as a positive control.
Purification:	Protein A purified

Target Details

Target:	TFEB
---------	------

Target Details

Alternative Name:	TFEB (TFEB Products)
Background:	<p>TFEB is a member of the basic Helix-Loop-Helix-Zipper family of transcription factors. TFEB can bind DNA as a homodimer or as a heterodimer with three closely related family members: MITF, TFE3 and TFEC. The t(6,11)(p21,q12), a translocation recently been shown to result in fusion of Alpha, a gene on 11q12, with the transcription factor gene TFEB on 6p21. This translocation ultimately leads to the development of Renal carcinomas.</p> <p>Alias Symbols: TCFEB, BHLHE35, ALPHATFEB</p> <p>Protein Interaction Partner: SRPK1, YWHAQ, TFEC, TFE3, MITF,</p> <p>Protein Size: 476</p>
Molecular Weight:	53 kDa
Gene ID:	7942
NCBI Accession:	NM_007162 , NP_009093
UniProt:	P19484

Application Details

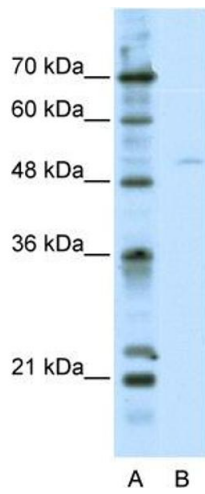
Application Notes:	Optimal working dilutions should be determined experimentally by the investigator.
Comment:	Antigen size: 476 AA
Restrictions:	For Research Use only

Handling

Format:	Liquid
Concentration:	Lot specific
Buffer:	Liquid. Purified antibody supplied in 1x PBS buffer with 0.09 % (w/v) sodium azide and 2 % sucrose.
Preservative:	Sodium azide
Precaution of Use:	This product contains Sodium azide: a POISONOUS AND HAZARDOUS SUBSTANCE which should be handled by trained staff only.
Handling Advice:	Avoid repeated freeze-thaw cycles.
Storage:	-20 °C
Storage Comment:	For short term use, store at 2-8°C up to 1 week. For long term storage, store at -20°C in small

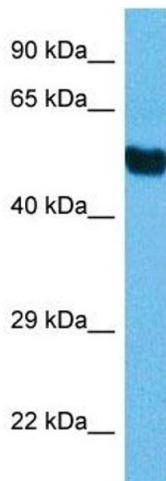
aliquots to prevent freeze-thaw cycles.

Images



Western Blotting

Image 1. WB Suggested Anti-TFEB Antibody Titration: 2.5ug/ml ELISA Titer: 1:312500 Positive Control: HepG2 cell lysate



Western Blotting

Image 2. Host: Mouse Target Name: TFE3 Sample Tissue: Mouse Brain Antibody Dilution: 1ug/ml