

Datasheet for ABIN2780787  
**anti-ELL antibody (N-Term)**[Go to Product page](#)

## 2 Images

## Overview

Quantity:	100 µL
Target:	ELL
Binding Specificity:	N-Term
Reactivity:	Human, Mouse, Dog, Rat, Cow, Guinea Pig
Host:	Rabbit
Clonality:	Polyclonal
Conjugate:	This ELL antibody is un-conjugated
Application:	Western Blotting (WB), Immunohistochemistry (IHC)

## Product Details

Immunogen:	The immunogen is a synthetic peptide directed towards the N terminal region of human ELL
Sequence:	GLSCGRVSDG SKVSVFHVKL TDSALRAFES YRARQDSVSL RPSIRFQGSQ
Predicted Reactivity:	Cow: 93%, Dog: 86%, Guinea Pig: 92%, Human: 100%, Mouse: 92%, Rat: 92%
Characteristics:	This is a rabbit polyclonal antibody against ELL. It was validated on Western Blot and immunohistochemistry.
Purification:	Protein A purified

## Target Details

Target:	ELL
Alternative Name:	ELL ( <a href="#">ELL Products</a> )

## Target Details

Background:	<p>ELL was shown to encode a previously uncharacterized elongation factor that can increase the catalytic rate of RNA polymerase II transcription by suppressing transient pausing by polymerase at multiple sites along the DNA. Functionally, ELL resembles Elongin (SIII), a transcription elongation factor regulated by the product of the von Hippel-Lindau (VHL) tumor suppressor gene.</p> <p>Alias Symbols: MEN, ELL1, PPP1R68, C19orf17</p> <p>Protein Interaction Partner: UBC, LOC100363176, SNF8, MCM2, Polr2e, Polr2l, Polr2h, Polr2d, Polr2a, Polr2c, Polr2i, Polr2b, Polr2j, Polr2g, Polr2f, EAF1, ICE2, AFF4, PPP1CA, ICE1, MED26, MLLT3, CDK9, TFPT, KMT2A, MLLT1, USPL1, EAF2, HNRNPU, TP53, ZHX1, SIRT2,</p> <p>Protein Size: 621</p>
Molecular Weight:	68 kDa
Gene ID:	8178
NCBI Accession:	<a href="#">NM_006532</a> , <a href="#">NP_006523</a>
UniProt:	<a href="#">P55199</a>

## Application Details

Application Notes:	Optimal working dilutions should be determined experimentally by the investigator.
Comment:	Antigen size: 621 AA
Restrictions:	For Research Use only

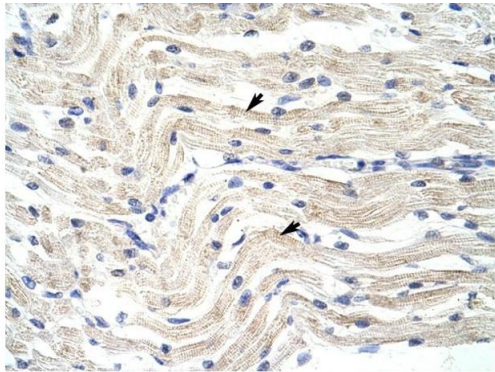
## Handling

Format:	Liquid
Concentration:	Lot specific
Buffer:	Liquid. Purified antibody supplied in 1x PBS buffer with 0.09 % (w/v) sodium azide and 2 % sucrose.
Preservative:	Sodium azide
Precaution of Use:	This product contains Sodium azide: a POISONOUS AND HAZARDOUS SUBSTANCE which should be handled by trained staff only.
Handling Advice:	Avoid repeated freeze-thaw cycles.
Storage:	-20 °C

Handling

Storage Comment: For short term use, store at 2-8°C up to 1 week. For long term storage, store at -20°C in small aliquots to prevent freeze-thaw cycles.

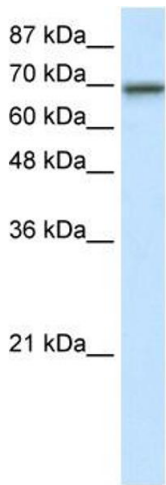
Images



Rabbit Anti-ELL Antibody  
Catalog Number: ARP38813  
Lot Number: QC8494  
Paraffin Embedded Tissue: Human Muscle  
Cells with Positive label: Skeletal muscle cells (Indicated with Arrows)  
Antibody Concentration: 4.0-8.0 µg/ml  
Magnification: 400X

Immunohistochemistry

Image 1. Human Muscle



Western Blotting

Image 2. WB Suggested Anti-ELL Antibody Titration:  
7.5ug/ml ELISA Titer: 1:1562500 Positive Control:  
Transfected 293T