

Datasheet for ABIN2780810

**anti-ZFP36L2 antibody (N-Term)****2** Images**1** Publication[Go to Product page](#)

## Overview

Quantity:	100 µL
Target:	ZFP36L2
Binding Specificity:	N-Term
Reactivity:	Human, Mouse, Rat, Cow, Dog, Horse, Pig, Rabbit
Host:	Rabbit
Clonality:	Polyclonal
Conjugate:	This ZFP36L2 antibody is un-conjugated
Application:	Western Blotting (WB)

## Product Details

Immunogen:	The immunogen is a synthetic peptide directed towards the N terminal region of human ZFP36L2
Sequence:	MSTLLSAFY DVDFLCKTEK SLANLNLNNM LDKKAVGTPV AAAPSSGFAP
Predicted Reactivity:	Cow: 100%, Dog: 100%, Horse: 100%, Human: 100%, Mouse: 100%, Pig: 100%, Rabbit: 100%, Rat: 100%
Characteristics:	This is a rabbit polyclonal antibody against ZFP36L2. It was validated on Western Blot using a cell lysate as a positive control.
Purification:	Protein A purified

## Target Details

Target:	ZFP36L2
---------	---------

## Target Details

Alternative Name:	ZFP36L2 ( <a href="#">ZFP36L2 Products</a> )
Background:	<p>ZFP36L2 is a member of the TIS11 family of early response genes. Family members are induced by various agonists such as the phorbol ester TPA and the polypeptide mitogen EGF. The encoded protein contains a distinguishing putative zinc finger domain with a repeating cys-his motif. This putative nuclear transcription factor most likely functions in regulating the response to growth factors. This gene is a member of the TIS11 family of early response genes. Family members are induced by various agonists such as the phorbol ester TPA and the polypeptide mitogen EGF. The encoded protein contains a distinguishing putative zinc finger domain with a repeating cys-his motif. This putative nuclear transcription factor most likely functions in regulating the response to growth factors.</p> <p>Alias Symbols: BRF2, ERF2, ERF-2, TIS11D, RNF162C</p> <p>Protein Interaction Partner: YWHAB, YWHAE, UBC, CUL3,</p> <p>Protein Size: 494</p>
Molecular Weight:	51 kDa
Gene ID:	678
NCBI Accession:	<a href="#">NM_006887</a> , <a href="#">NP_008818</a>
UniProt:	<a href="#">Q53TB4</a>
Pathways:	<a href="#">Stem Cell Maintenance</a>

## Application Details

Application Notes:	Optimal working dilutions should be determined experimentally by the investigator.
Comment:	Antigen size: 494 AA
Restrictions:	For Research Use only

## Handling

Format:	Liquid
Concentration:	Lot specific
Buffer:	Liquid. Purified antibody supplied in 1x PBS buffer with 0.09 % (w/v) sodium azide and 2 % sucrose.
Preservative:	Sodium azide
Precaution of Use:	This product contains Sodium azide: a POISONOUS AND HAZARDOUS SUBSTANCE which

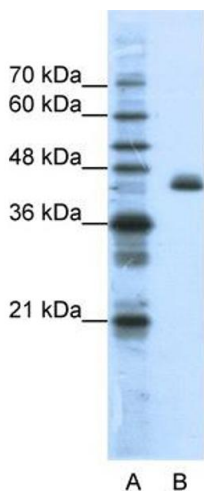
Handling

	should be handled by trained staff only.
Handling Advice:	Avoid repeated freeze-thaw cycles.
Storage:	-20 °C
Storage Comment:	For short term use, store at 2-8°C up to 1 week. For long term storage, store at -20°C in small aliquots to prevent freeze-thaw cycles.

Publications

Product cited in:	Hudson, Martinez-Yamout, Dyson, Wright: "Recognition of the mRNA AU-rich element by the zinc finger domain of TIS11d." in: <b>Nature structural &amp; molecular biology</b> , Vol. 11, Issue 3, pp. 257-64, (2004) ( <a href="#">PubMed</a> ).
-------------------	--

Images



**Western Blotting**

**Image 1.** WB Suggested Anti-ZFP36L2 Antibody Titration: 1.25ug/ml Positive Control: HepG2 cell lysate ZFP36L2 is strongly supported by BioGPS gene expression data to be expressed in Human HepG2 cells



**Western Blotting**

**Image 2.** WB Suggested Anti-ZFP36L2 Antibody Titration: 1.25 µg/mL Positive Control: HepG2 cell lysate ZFP36L2 is strongly supported by BioGPS gene expression data to be expressed in Human HepG2 cells