

Datasheet for ABIN2780814
anti-RORB antibody (C-Term)[Go to Product page](#)

3 Images

Overview

Quantity:	100 µL
Target:	RORB
Binding Specificity:	C-Term
Reactivity:	Human, Mouse, Rat, Cow, Dog, Horse, Sheep, Rabbit, Guinea Pig
Host:	Rabbit
Clonality:	Polyclonal
Conjugate:	This RORB antibody is un-conjugated
Application:	Western Blotting (WB)

Product Details

Immunogen:	The immunogen is a synthetic peptide directed towards the C terminal region of human RORB
Sequence:	KNHLDDETLA KLIAKIPTIT AVCNLHGKEL QVFKQSHPEI VNTLFPPLYK
Predicted Reactivity:	Cow: 100%, Dog: 100%, Guinea Pig: 100%, Horse: 100%, Human: 100%, Mouse: 100%, Rabbit: 100%, Rat: 100%, Sheep: 100%
Characteristics:	This is a rabbit polyclonal antibody against RORB. It was validated on Western Blot using a cell lysate as a positive control.
Purification:	Affinity Purified

Target Details

Target:	RORB
---------	------

Target Details

Alternative Name:	RORB (RORB Products)
Background:	<p>RORB is a member of the NR1 subfamily of nuclear hormone receptors. It is a DNA-binding protein that can bind as a monomer or as a homodimer to hormone response elements upstream of several genes to enhance the expression of those genes. The specific functions of this protein are not known, but it has been shown to interact with NM23-2, a nucleoside diphosphate kinase involved in organogenesis and differentiation. The protein encoded by this gene is a member of the NR1 subfamily of nuclear hormone receptors. It is a DNA-binding protein that can bind as a monomer or as a homodimer to hormone response elements upstream of several genes to enhance the expression of those genes. The specific functions of this protein are not known, but it has been shown to interact with NM23-2, a nucleoside diphosphate kinase involved in organogenesis and differentiation. Publication Note: This RefSeq record includes a subset of the publications that are available for this gene. Please see the Entrez Gene record to access additional publications.</p> <p>Alias Symbols: NR1F2, ROR-BETA, RZRB, bA133M9.1, RZR-BETA</p> <p>Protein Interaction Partner: NSD1, NCOA1, NCOA6, PNRC1, EIF3I, NRIP1, UBE2I, TNNI2, SRC, PSMC4, NPPA, MAP6, PNRC2, NRIP2, NME2, NME1,</p> <p>Protein Size: 459</p>
Molecular Weight:	52 kDa
Gene ID:	6096
NCBI Accession:	NM_006914 , NP_008845
UniProt:	Q98934
Pathways:	Nuclear Receptor Transcription Pathway , Steroid Hormone Mediated Signaling Pathway

Application Details

Application Notes:	Optimal working dilutions should be determined experimentally by the investigator.
Comment:	Antigen size: 459 AA
Restrictions:	For Research Use only

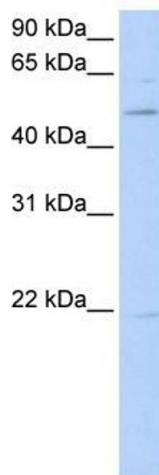
Handling

Format:	Liquid
Concentration:	Lot specific

Handling

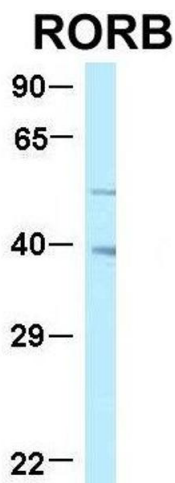
Buffer:	Liquid. Purified antibody supplied in 1x PBS buffer with 0.09 % (w/v) sodium azide and 2 % sucrose.
Preservative:	Sodium azide
Precaution of Use:	This product contains Sodium azide: a POISONOUS AND HAZARDOUS SUBSTANCE which should be handled by trained staff only.
Handling Advice:	Avoid repeated freeze-thaw cycles.
Storage:	-20 °C
Storage Comment:	For short term use, store at 2-8°C up to 1 week. For long term storage, store at -20°C in small aliquots to prevent freeze-thaw cycles.

Images



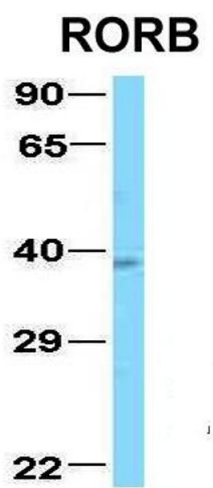
Western Blotting

Image 1. WB Suggested Anti-RORB Antibody Titration: 0.2-1 ug/ml ELISA Titer: 1:312500 Positive Control: Transfected 293T



Western Blotting

Image 2. Host: Rabbit Target Name: RORB Sample Type: Human Fetal Liver Antibody Dilution: 1.0ug/ml



Western Blotting

Image 3. Host: Rabbit Target Name: RORB Sample Type:
Human Fetal Lung Antibody Dilution: 1.0ug/ml