

Datasheet for ABIN2780817
anti-SOX15 antibody (Middle Region)[Go to Product page](#)

2 Images

Overview

Quantity:	100 µL
Target:	SOX15
Binding Specificity:	Middle Region
Reactivity:	Human, Mouse, Guinea Pig, Rat, Cow, Horse, Dog
Host:	Rabbit
Clonality:	Polyclonal
Conjugate:	This SOX15 antibody is un-conjugated
Application:	Western Blotting (WB), Immunohistochemistry (IHC)

Product Details

Immunogen:	The immunogen is a synthetic peptide directed towards the middle region of human SOX15
Sequence:	ASGGPLWGPG YATTQPSRGF GYRPPSYSTA YLPGSYGSSH CKLEAPSPCS
Predicted Reactivity:	Cow: 100%, Dog: 93%, Guinea Pig: 100%, Horse: 100%, Human: 100%, Mouse: 93%, Rat: 86%
Characteristics:	This is a rabbit polyclonal antibody against SOX15. It was validated on Western Blot and immunohistochemistry.
Purification:	Protein A purified

Target Details

Target:	SOX15
Alternative Name:	SOX15 (SOX15 Products)

Target Details

Background:	<p>SOX15 is a member of the SOX (SRY-related HMG-box) family of transcription factors involved in the regulation of embryonic development and in the determination of the cell fate. The protein may act as a transcriptional regulator after forming a protein complex with other proteins. This gene encodes a member of the SOX (SRY-related HMG-box) family of transcription factors involved in the regulation of embryonic development and in the determination of the cell fate. The encoded protein may act as a transcriptional regulator after forming a protein complex with other proteins.</p> <p>Alias Symbols: SOX20, SOX26, SOX27</p> <p>Protein Interaction Partner: HSFY1, BHLHE40, HOXB9,</p> <p>Protein Size: 233</p>
Molecular Weight:	25 kDa
Gene ID:	6665
NCBI Accession:	NM_006942 , NP_008873
UniProt:	O60248

Application Details

Application Notes:	Optimal working dilutions should be determined experimentally by the investigator.
Comment:	Antigen size: 233 AA
Restrictions:	For Research Use only

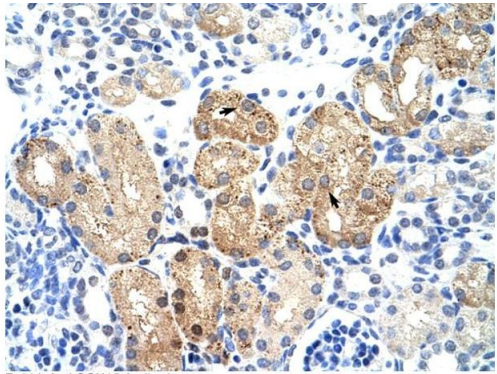
Handling

Format:	Liquid
Concentration:	Lot specific
Buffer:	Liquid. Purified antibody supplied in 1x PBS buffer with 0.09 % (w/v) sodium azide and 2 % sucrose.
Preservative:	Sodium azide
Precaution of Use:	This product contains Sodium azide: a POISONOUS AND HAZARDOUS SUBSTANCE which should be handled by trained staff only.
Handling Advice:	Avoid repeated freeze-thaw cycles.
Storage:	-20 °C

Handling

Storage Comment: For short term use, store at 2-8°C up to 1 week. For long term storage, store at -20°C in small aliquots to prevent freeze-thaw cycles.

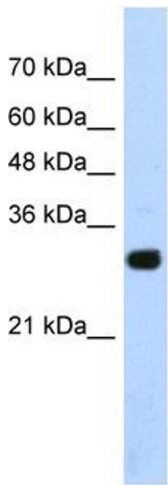
Images



Rabbit Anti-SOX15 Antibody
Catalog Number: ARP38883
Lot Number: QC10827
Paraffin Embedded Tissue: Human Kidney
Cells with Positive label: Epithelial cells of renal tubule (Indicated with Arrows)
Antibody Concentration: 4.0-8.0 µg/ml
Magnification: 400X

Immunohistochemistry

Image 1. Human kidney



Western Blotting

Image 2. WB Suggested Anti-SOX15 Antibody Titration:
1.25ug/ml Positive Control: Transfected 293T