

Datasheet for ABIN2780826
anti-Coronin 1a antibody (N-Term)



[Go to Product page](#)

2 Images

Overview

| | |
|----------------------|---|
| Quantity: | 100 µL |
| Target: | Coronin 1a (CORO1A) |
| Binding Specificity: | N-Term |
| Reactivity: | Human, Mouse, Rat, Cow, Dog, Horse, Rabbit, Guinea Pig, Zebrafish (Danio rerio) |
| Host: | Rabbit |
| Clonality: | Polyclonal |
| Conjugate: | This Coronin 1a antibody is un-conjugated |
| Application: | Western Blotting (WB) |

Product Details

| | |
|-----------------------|--|
| Immunogen: | The immunogen is a synthetic peptide directed towards the N terminal region of human CORO1A |
| Sequence: | MSRQVVRSSK FRHVFQPAK ADQCYEDVRV SQTWDSGFC AVNPKFVALI |
| Predicted Reactivity: | Cow: 100%, Dog: 100%, Guinea Pig: 100%, Horse: 100%, Human: 100%, Mouse: 100%, Rabbit: 100%, Rat: 100%, Zebrafish: 86% |
| Characteristics: | This is a rabbit polyclonal antibody against CORO1A. It was validated on Western Blot using a cell lysate as a positive control. |
| Purification: | Protein A purified |

Target Details

| | |
|---------|---------------------|
| Target: | Coronin 1a (CORO1A) |
|---------|---------------------|

Target Details

| | |
|-------------------|---|
| Alternative Name: | COR01A (COR01A Products) |
| Background: | <p>COR01A is a novel actin-binding protein with a WD repeat and a leucine zipper motif. COR01A forms homodimers, that the association is mediated by the leucine zipper structure in the C-terminal region, and that it plays a role in the cross-linking of F-actin in the cell. The leukocyte plasma membrane associates with the actin cytoskeleton through COR01A. Downregulation of COR01A gene transcription restricts entry/survival of mycobacteria within macrophages</p> <p>Alias Symbols: p57, TACO, CLABP, HCOR01, CLIPINA</p> <p>Protein Interaction Partner: FSD2, GOLGA2, UBC, YTHDC1, SPATA20, POT1, TAB1, GIT2, POLR1C, STAT3, SMARCD1, MAGOH, SMAD3, LMO2, FHL3, FMNL1, NCF4, THBS1, ACTB, DKK1, UBE2G2,</p> <p>Protein Size: 461</p> |
| Molecular Weight: | 51 kDa |
| Gene ID: | 11151 |
| NCBI Accession: | NM_007074 , NP_009005 |
| UniProt: | Q2YD73 |
| Pathways: | Regulation of Actin Filament Polymerization |

Application Details

| | |
|--------------------|--|
| Application Notes: | Optimal working dilutions should be determined experimentally by the investigator. |
| Comment: | Antigen size: 461 AA |
| Restrictions: | For Research Use only |

Handling

| | |
|--------------------|--|
| Format: | Liquid |
| Concentration: | Lot specific |
| Buffer: | Liquid. Purified antibody supplied in 1x PBS buffer with 0.09 % (w/v) sodium azide and 2 % sucrose. |
| Preservative: | Sodium azide |
| Precaution of Use: | This product contains Sodium azide: a POISONOUS AND HAZARDOUS SUBSTANCE which should be handled by trained staff only. |

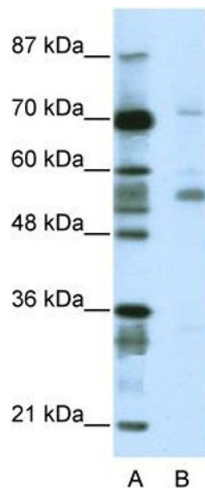
Handling

Handling Advice: Avoid repeated freeze-thaw cycles.

Storage: -20 °C

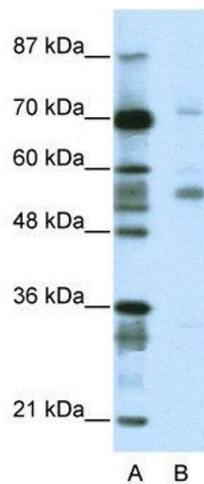
Storage Comment: For short term use, store at 2-8°C up to 1 week. For long term storage, store at -20°C in small aliquots to prevent freeze-thaw cycles.

Images



Western Blotting

Image 1. WB Suggested Anti-CORO1A Antibody Titration: 2.5ug/ml ELISA Titer: 1:312500 Positive Control: Jurkat cell lysate CORO1A is supported by BioGPS gene expression data to be expressed in Jurkat



Western Blotting

Image 2. WB Suggested Anti-CORO1A Antibody Titration: 2.5 µg/mL ELISA Titer: 1:12500 Positive Control: Jurkat cell lysate CORO1A is supported by BioGPS gene expression data to be expressed in Jurkat