

Datasheet for ABIN2780837
anti-PMF1 antibody (N-Term)[Go to Product page](#)

4 Images

Overview

Quantity:	100 µL
Target:	PMF1
Binding Specificity:	N-Term
Reactivity:	Human, Mouse, Cow, Rat, Guinea Pig, Pig, Dog, Goat, Horse, Rabbit
Host:	Rabbit
Clonality:	Polyclonal
Conjugate:	This PMF1 antibody is un-conjugated
Application:	Western Blotting (WB), Immunohistochemistry (IHC)

Product Details

Immunogen:	The immunogen is a synthetic peptide directed towards the N terminal region of human PMF1
Sequence:	MVDTFLQKL V AAGSYQRFTD CYKCFYQLQP AMTQRIYDKF IAQLQTSIRE
Predicted Reactivity:	Cow: 93%, Dog: 93%, Goat: 100%, Guinea Pig: 92%, Horse: 93%, Human: 93%, Mouse: 77%, Pig: 93%, Rabbit: 93%, Rat: 85%
Characteristics:	This is a rabbit polyclonal antibody against PMF1. It was validated on Western Blot and immunohistochemistry.
Purification:	Affinity Purified

Target Details

Target:	PMF1
---------	------

Target Details

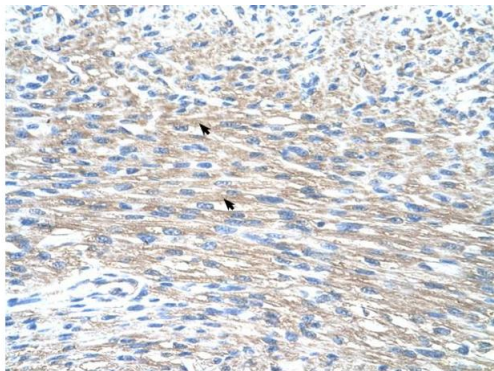
Alternative Name:	PMF1 (PMF1 Products)
Background:	<p>PMF1 is part of the MIS12 complex which is required for normal chromosome alignment and segregation and kinetochore formation during mitosis. It may act as a cotranscription partner of NFE2L2 involved in regulation of polyamine-induced transcription of SSAT.</p> <p>Alias Symbols: RP11-54H19.4</p> <p>Protein Interaction Partner: USHBP1, MIS12, KDM1A, SUGT1, TCP10L, UBC, DSN1, COPS7A, NFE2L2, HSP90AA1, KIAA1377, COPS6, MED31, COPS7B, GIT1, CRMP1, GDF9, PTN,</p> <p>Protein Size: 165</p>
Molecular Weight:	19 kDa
Gene ID:	11243
NCBI Accession:	NM_007221 , NP_009152
UniProt:	Q6P1K2

Application Details

Application Notes:	Optimal working dilutions should be determined experimentally by the investigator.
Comment:	Antigen size: 165 AA
Restrictions:	For Research Use only

Handling

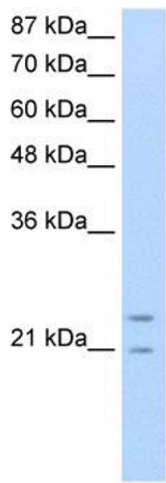
Format:	Liquid
Concentration:	Lot specific
Buffer:	Liquid. Purified antibody supplied in 1x PBS buffer with 0.09 % (w/v) sodium azide and 2 % sucrose.
Preservative:	Sodium azide
Precaution of Use:	This product contains Sodium azide: a POISONOUS AND HAZARDOUS SUBSTANCE which should be handled by trained staff only.
Handling Advice:	Avoid repeated freeze-thaw cycles.
Storage:	-20 °C
Storage Comment:	For short term use, store at 2-8°C up to 1 week. For long term storage, store at -20°C in small aliquots to prevent freeze-thaw cycles.



Rabbit Anti-PMF1 Antibody
Catalog Number: ARP38922
Lot Number: QC10078
Paraffin Embedded Tissue: Human Heart
Cells with Positive label: Myocardial cells (Indicated with Arrows)
Antibody Concentration: 4.0-8.0 µg/ml
Magnification: 400X

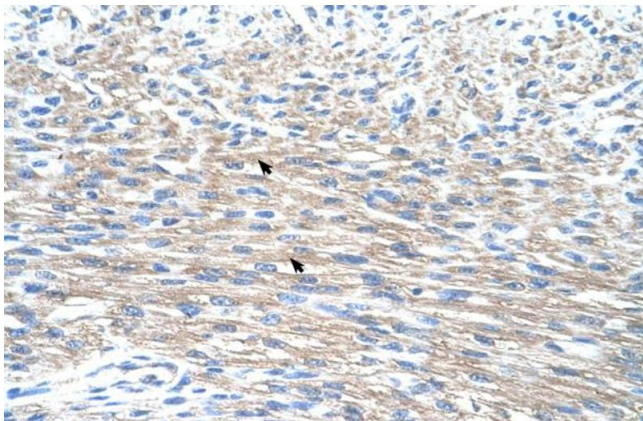
Immunohistochemistry

Image 1. Human Heart



Western Blotting

Image 2. WB Suggested Anti-PMF1 Antibody Titration: 0.2-1 ug/ml Positive Control: Transfected 293T



Immunohistochemistry

Image 3. Human Heart

Please check the [product details page](#) for more images. Overall 4 images are available for ABIN2780837.