

Datasheet for ABIN2780841
anti-POU6F2 antibody (C-Term)



[Go to Product page](#)

1 Image

Overview

Quantity:	100 µL
Target:	POU6F2
Binding Specificity:	C-Term
Reactivity:	Human, Mouse, Rat, Cow, Rabbit, Dog, Guinea Pig, Horse, Zebrafish (Danio rerio)
Host:	Rabbit
Clonality:	Polyclonal
Conjugate:	This POU6F2 antibody is un-conjugated
Application:	Western Blotting (WB)

Product Details

Immunogen:	The immunogen is a synthetic peptide directed towards the C terminal region of human POU6F2
Sequence:	PSKKRKRRTS FTPQALEILN AHFEKNTHPS GQEMTEIAEK LNYDREVV RV
Predicted Reactivity:	Cow: 79%, Dog: 100%, Guinea Pig: 100%, Horse: 100%, Human: 100%, Mouse: 100%, Rabbit: 93%, Rat: 100%, Zebrafish: 100%
Characteristics:	This is a rabbit polyclonal antibody against POU6F2. It was validated on Western Blot.
Purification:	Affinity Purified

Target Details

Target:	POU6F2
---------	--------

Target Details

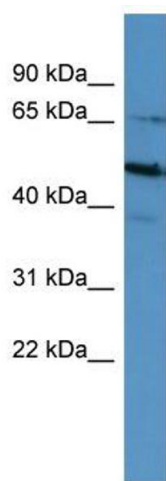
Alternative Name:	POU6F2 (POU6F2 Products)
Background:	<p>POU6F2 is a member of a gene family characterized by the presence of a bipartite DNA-binding domain, consisting of a POU-specific domain and a POU heterodomain, separated by a variable polylinker. POU domain family members are transcriptional regulators, many of which show highly restricted patterns of expression and are known to control cell type-specific differentiation pathways.</p> <p>Alias Symbols: RPF-1, WT5, WTSL</p> <p>Protein Size: 691</p>
Molecular Weight:	73 kDa
Gene ID:	11281
NCBI Accession:	NM_007252 , NP_009183
UniProt:	P78424

Application Details

Application Notes:	Optimal working dilutions should be determined experimentally by the investigator.
Comment:	Antigen size: 691 AA
Restrictions:	For Research Use only

Handling

Format:	Liquid
Concentration:	Lot specific
Buffer:	Liquid. Purified antibody supplied in 1x PBS buffer with 0.09 % (w/v) sodium azide and 2 % sucrose.
Preservative:	Sodium azide
Precaution of Use:	This product contains Sodium azide: a POISONOUS AND HAZARDOUS SUBSTANCE which should be handled by trained staff only.
Handling Advice:	Avoid repeated freeze-thaw cycles.
Storage:	-20 °C
Storage Comment:	For short term use, store at 2-8°C up to 1 week. For long term storage, store at -20°C in small aliquots to prevent freeze-thaw cycles.



Western Blotting

Image 1. WB Suggested Anti-POU6F2 Antibody Titration:
0.2-1 ug/ml ELISA Titer: 1:62500 Positive Control: HepG2
cell lysate