

Datasheet for ABIN2780843
anti-STAT1 antibody (N-Term)

4 Images

1 Publication

[Go to Product page](#)

Overview

Quantity:	100 µL
Target:	STAT1
Binding Specificity:	N-Term
Reactivity:	Human, Mouse, Rat, Dog, Cow, Sheep, Horse, Rabbit, Guinea Pig, Zebrafish (Danio rerio)
Host:	Rabbit
Clonality:	Polyclonal
Conjugate:	This STAT1 antibody is un-conjugated
Application:	Western Blotting (WB), Immunohistochemistry (IHC)

Product Details

Immunogen:	The immunogen is a synthetic peptide directed towards the N terminal region of human STAT1
Sequence:	MSQWYELQQL DSKFLEQVHQ LYDDSFPM EI RQYLAQWLEK QDWEHAANDV
Predicted Reactivity:	Cow: 86%, Dog: 100%, Guinea Pig: 100%, Horse: 100%, Human: 100%, Mouse: 100%, Rabbit: 100%, Rat: 100%, Sheep: 86%, Zebrafish: 86%
Characteristics:	This is a rabbit polyclonal antibody against STAT1. It was validated on Western Blot and immunohistochemistry.
Purification:	Affinity Purified

Target Details

Target:	STAT1
---------	-------

Target Details

Alternative Name: STAT1 ([STAT1 Products](#))

Background: STAT1 is a member of the STAT protein family. In response to cytokines and growth factors, STAT family members are phosphorylated by the receptor associated kinases, and then form homo- or heterodimers that translocate to the cell nucleus where they act as transcription activators. This protein can be activated by various ligands including interferon-alpha, interferon-gamma, EGF, PDGF and IL6. This protein mediates the expression of a variety of genes, which is thought to be important for cell viability in response to different cell stimuli and pathogens. The protein encoded by this gene is a member of the STAT protein family. In response to cytokines and growth factors, STAT family members are phosphorylated by the receptor associated kinases, and then form homo- or heterodimers that translocate to the cell nucleus where they act as transcription activators. This protein can be activated by various ligands including interferon-alpha, interferon-gamma, EGF, PDGF and IL6. This protein mediates the expression of a variety of genes, which is thought to be important for cell viability in response to different cell stimuli and pathogens. Two alternatively spliced transcript variants encoding distinct isoforms have been described.

Alias Symbols: DKFZp686B04100, ISGF-3, STAT91, CANDF7

Protein Interaction Partner: HUWE1, ISG15, PIAS1, UBC, STAT1, EIF1AD, OTUD4, LMO2, GNB2, DTX3L, EGFR, NAA15, SNX6, CAND1, VPS29, GSPT2, JMJD6, RTF1, HSPA4L, ATG7, YAP1, PAWR, KARS, IDE, CTTN, VPS26A, HIRIP3, NAA10, TSNAX, TBCD, SNX2, SNX1, SHMT2, SHMT1, SARS, ATP6V1C1, APEH, USP13, E

Protein Size: 750

Molecular Weight: 87 kDa

Gene ID: 6772

NCBI Accession: [NM_007315](#), [NP_009330](#)

UniProt: [P42224](#)

Pathways: [JAK-STAT Signaling](#), [RTK Signaling](#), [Interferon-gamma Pathway](#), [Response to Growth Hormone Stimulus](#), [Cellular Response to Molecule of Bacterial Origin](#), [Positive Regulation of Endopeptidase Activity](#), [Hepatitis C](#), [CXCR4-mediated Signaling Events](#)

Application Details

Application Notes: Optimal working dilutions should be determined experimentally by the investigator.

Comment: Antigen size: 750 AA

Restrictions: For Research Use only

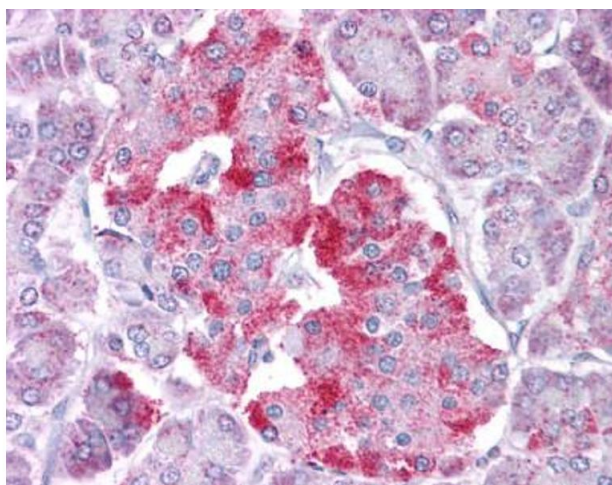
Handling

Format:	Liquid
Concentration:	Lot specific
Buffer:	Liquid. Purified antibody supplied in 1x PBS buffer with 0.09 % (w/v) sodium azide and 2 % sucrose.
Preservative:	Sodium azide
Precaution of Use:	This product contains Sodium azide: a POISONOUS AND HAZARDOUS SUBSTANCE which should be handled by trained staff only.
Handling Advice:	Avoid repeated freeze-thaw cycles.
Storage:	-20 °C
Storage Comment:	For short term use, store at 2-8°C up to 1 week. For long term storage, store at -20°C in small aliquots to prevent freeze-thaw cycles.

Publications

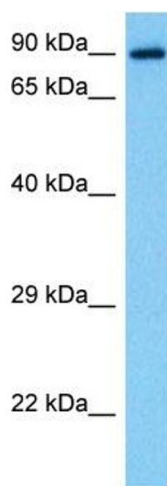
Product cited in:	Gerhard, Wagner, Feingold, Shenmen, Grouse, Schuler, Klein, Old, Rasooly, Good, Guyer, Peck, Derge, Lipman, Collins, Jang, Sherry, Feolo, Misquitta, Lee, Rotmistrovsky, Greenhut, Schaefer, Buetow et al.: "The status, quality, and expansion of the NIH full-length cDNA project: the Mammalian Gene Collection (MGC). ..." in: Genome research , Vol. 14, Issue 10B, pp. 2121-7, (2004) (PubMed).
-------------------	--

Images



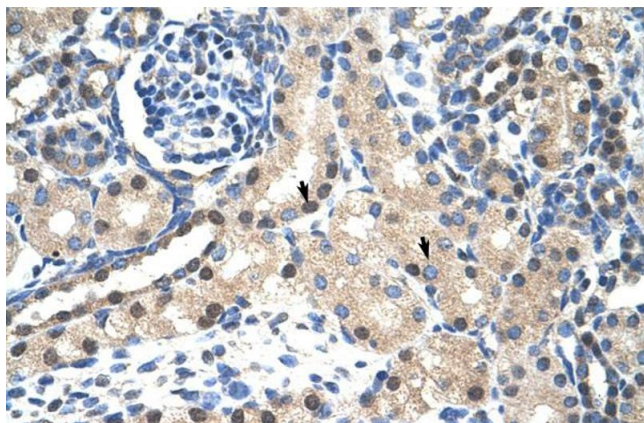
Immunohistochemistry

Image 1.



Western Blotting

Image 2. Host: Mouse Target Name: STAT1 Sample Tissue: Mouse Pancreas Antibody Dilution: 1ug/ml



Immunohistochemistry

Image 3. Rabbit Anti-STAT1 Antibody Paraffin Embedded Tissue: Human Kidney Cellular Data: Epithelial cells of renal tubule Antibody Concentration: 4.0-8.0 ug/ml Magnification: 400X

Please check the [product details page](#) for more images. Overall 4 images are available for ABIN2780843.