

Datasheet for ABIN2780854
anti-GTF3C5 antibody (C-Term)[Go to Product page](#)

2 Images

Overview

Quantity:	100 µL
Target:	GTF3C5
Binding Specificity:	C-Term
Reactivity:	Human, Mouse, Rat, Cow, Horse, Dog, Rabbit, Guinea Pig
Host:	Rabbit
Clonality:	Polyclonal
Conjugate:	This GTF3C5 antibody is un-conjugated
Application:	Western Blotting (WB), Immunohistochemistry (IHC)

Product Details

Immunogen:	The immunogen is a synthetic peptide directed towards the C terminal region of human GTF3C5
Sequence:	SKRPALFSSS AKADGGKEQL TYESGEDEED EEEEEEEEEED FKPSDGSENE
Predicted Reactivity:	Cow: 93%, Dog: 93%, Guinea Pig: 77%, Horse: 100%, Human: 100%, Mouse: 100%, Rabbit: 93%, Rat: 100%
Characteristics:	This is a rabbit polyclonal antibody against GTF3C5. It was validated on Western Blot and immunohistochemistry.
Purification:	Affinity Purified

Target Details

Target:	GTF3C5
---------	--------

Target Details

Alternative Name:	GTF3C5 (GTF3C5 Products)
Background:	<p>GTF3C5 is polypeptide 5 of general transcription factor IIIon Channel. Human transcription factor IIIon Channel (hTFIIIon Channel) is a multisubunit complex that directly recognizes promoter elements and recruits TFIIIB and RNA polymerase III.</p> <p>Alias Symbols: TFIIIC63, TFIIIC2-63, TFIIICepsilon</p> <p>Protein Interaction Partner: MDFI, NOTCH2NL, KRTAP10-3, KRT40, CEP250, VCP, UBC, ECT2, PAXIP1, SRA1, GTF3C6, PBRM1, GTF3C3, GTF3C4, GTF3C2, GTF3C1, CUL1, CUL3, SMARCAD1, tat, EP300, TCF4, TCF21, TAF10, BRF1, POLR3C, TBP,</p> <p>Protein Size: 519</p>
Molecular Weight:	60 kDa
Gene ID:	9328
NCBI Accession:	NM_012087 , NP_036219
UniProt:	Q9Y5Q8

Application Details

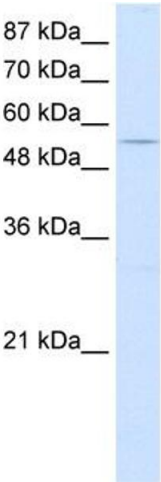
Application Notes:	Optimal working dilutions should be determined experimentally by the investigator.
Comment:	Antigen size: 519 AA
Restrictions:	For Research Use only

Handling

Format:	Liquid
Concentration:	Lot specific
Buffer:	Liquid. Purified antibody supplied in 1x PBS buffer with 0.09 % (w/v) sodium azide and 2 % sucrose.
Preservative:	Sodium azide
Precaution of Use:	This product contains Sodium azide: a POISONOUS AND HAZARDOUS SUBSTANCE which should be handled by trained staff only.
Handling Advice:	Avoid repeated freeze-thaw cycles.
Storage:	-20 °C
Storage Comment:	For short term use, store at 2-8°C up to 1 week. For long term storage, store at -20°C in small

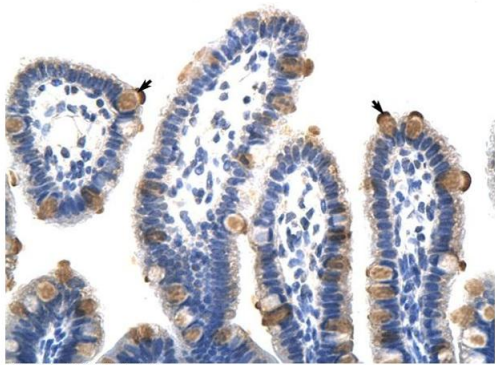
aliquots to prevent freeze-thaw cycles.

Images



Western Blotting

Image 1. WB Suggested Anti-GTF3C5 Antibody Titration:
0.2-1 ug/ml Positive Control: HepG2 cell lysate



Immunohistochemistry

Image 2. Human Intestine

Rabbit Anti-GTF3C5 Antibody
Catalog Number: ARP38951
Lot Number: QC10372
Paraffin Embedded Tissue: Human Intestine
Cells with Positive label: Epithelial cells of intestinal villus (Indicated with Arrows)
Antibody Concentration: 4.0-8.0 µg/ml
Magnification: 400X