

Datasheet for ABIN2780858  
**anti-CIZ1 antibody (C-Term)**[Go to Product page](#)

## 2 Images

## Overview

Quantity:	100 µL
Target:	CIZ1
Binding Specificity:	C-Term
Reactivity:	Human, Horse
Host:	Rabbit
Clonality:	Polyclonal
Conjugate:	This CIZ1 antibody is un-conjugated
Application:	Western Blotting (WB), Immunohistochemistry (IHC)

## Product Details

Immunogen:	The immunogen is a synthetic peptide directed towards the C terminal region of human CIZ1
Sequence:	YKAAKNPSPT TRPVSRRCAI NARNALTALF TSSGRPPSQP NTQDKTPSKV
Predicted Reactivity:	Horse: 77%, Human: 100%
Characteristics:	This is a rabbit polyclonal antibody against CIZ1. It was validated on Western Blot and immunohistochemistry.
Purification:	Affinity Purified

## Target Details

Target:	CIZ1
Alternative Name:	CIZ1 ( <a href="#">CIZ1 Products</a> )

## Target Details

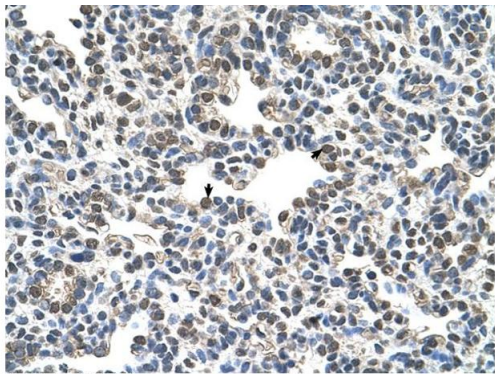
Background:	CIZ1 may regulate the subcellular localization of CIP/WAF1. Alias Symbols: LSFR1, ZNF356, NP94 Protein Interaction Partner: BMI1, UPF2, ERH, SH3KBP1, SH3BP4, UBC, DynII1, CDKN1A, Protein Size: 898
Molecular Weight:	100 kDa
Gene ID:	25792
NCBI Accession:	<a href="#">NM_012127</a> , <a href="#">NP_036259</a>
UniProt:	<a href="#">Q9ULV3</a>
Pathways:	<a href="#">Maintenance of Protein Location</a>

## Application Details

Application Notes:	Optimal working dilutions should be determined experimentally by the investigator.
Comment:	Antigen size: 898 AA
Restrictions:	For Research Use only

## Handling

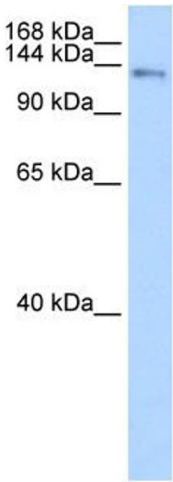
Format:	Liquid
Concentration:	Lot specific
Buffer:	Liquid. Purified antibody supplied in 1x PBS buffer with 0.09 % (w/v) sodium azide and 2 % sucrose.
Preservative:	Sodium azide
Precaution of Use:	This product contains Sodium azide: a POISONOUS AND HAZARDOUS SUBSTANCE which should be handled by trained staff only.
Handling Advice:	Avoid repeated freeze-thaw cycles.
Storage:	-20 °C
Storage Comment:	For short term use, store at 2-8°C up to 1 week. For long term storage, store at -20°C in small aliquots to prevent freeze-thaw cycles.



Rabbit Anti-CIZ1 Antibody  
Catalog Number: ARP38956  
Lot Number: QC8971  
Paraffin Embedded Tissue: Human Lung  
Cells with Positive label: Alveolar cells (Indicated with Arrows)  
Antibody Concentration: 4.0-8.0 µg/ml  
Magnification: 400X

Immunohistochemistry

Image 1. Human Lung



Western Blotting

Image 2. WB Suggested Anti-CIZ1 Antibody Titration: 0.2-1 ug/ml ELISA Titer: 1:62500 Positive Control: Transfected 293T