

Datasheet for ABIN2780876
anti-LDOC1 antibody (N-Term)[Go to Product page](#)

4 Images

Overview

Quantity:	100 µL
Target:	LDOC1
Binding Specificity:	N-Term
Reactivity:	Human, Rat, Cow, Dog, Guinea Pig, Rabbit, Horse
Host:	Rabbit
Clonality:	Polyclonal
Conjugate:	This LDOC1 antibody is un-conjugated
Application:	Immunohistochemistry (IHC), Western Blotting (WB)

Product Details

Immunogen:	The immunogen is a synthetic peptide directed towards the N terminal region of human LDOC1
Sequence:	MVDELVLLH ALLMRHRALS IENSQLMEQL RLLVCERASL LRQVRPPSCP
Predicted Reactivity:	Cow: 100%, Dog: 100%, Guinea Pig: 100%, Horse: 93%, Human: 100%, Rabbit: 100%, Rat: 79%
Characteristics:	This is a rabbit polyclonal antibody against LDOC1. It was validated on Western Blot using a cell lysate as a positive control.
Purification:	Affinity Purified

Target Details

Target:	LDOC1
Alternative Name:	LDOC1 (LDOC1 Products)

Target Details

Background:	<p>LDOC1 contains a leucine zipper-like motif and a proline-rich region that shares marked similarity with an SH3-binding domain. The protein localizes to the nucleus and is down-regulated in some cancer cell lines. It is thought to regulate the transcriptional response mediated by the nuclear factor kappa B (NF-kappaB). The gene has been proposed as a tumor suppressor gene whose protein product may have an important role in the development and/or progression of some cancers. The protein encoded by this gene contains a leucine zipper-like motif and a proline-rich region that shares marked similarity with an SH3-binding domain. The protein localizes to the nucleus and is down-regulated in some cancer cell lines. It is thought to regulate the transcriptional response mediated by the nuclear factor kappa B (NF-kappaB). The gene has been proposed as a tumor suppressor gene whose protein product may have an important role in the development and/or progression of some cancers.</p> <p>Alias Symbols: BCUR1, Mar7, Mart7</p> <p>Protein Interaction Partner: LENG1, TTC23, MEAF6, SH2D4A, CTNBL1, DPPA4, FAM90A1, C1orf109, FAM208B, TBC1D7, PRPF31, LDOC1, PEG10, NXF1, ZBTB24, HDAC4, ATP6V1G1, HGS, LATS1, RAB29, TNNT1, TMSB4XP1, SDCBP, DPF2, PSMA1, MFAP1, BARD1, ATF4, AES, ZNF774, ZNF564, HAUS1, ZGPAT, CCDC33, IN</p> <p>Protein Size: 146</p>
-------------	--

Molecular Weight:	17 kDa
-------------------	--------

Gene ID:	23641
----------	-------

NCBI Accession:	NM_012317 , NP_036449
-----------------	---

UniProt:	O95751
----------	------------------------

Application Details

Application Notes:	Optimal working dilutions should be determined experimentally by the investigator.
--------------------	--

Comment:	Antigen size: 146 AA
----------	----------------------

Restrictions:	For Research Use only
---------------	-----------------------

Handling

Format:	Liquid
---------	--------

Concentration:	Lot specific
----------------	--------------

Buffer:	Liquid. Purified antibody supplied in 1x PBS buffer with 0.09 % (w/v) sodium azide and 2 % sucrose.
---------	---

Handling

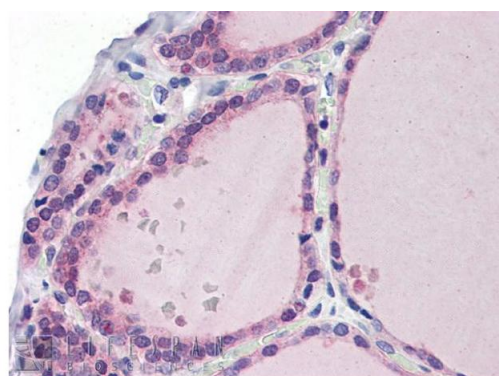
Preservative:	Sodium azide
Precaution of Use:	This product contains Sodium azide: a POISONOUS AND HAZARDOUS SUBSTANCE which should be handled by trained staff only.
Handling Advice:	Avoid repeated freeze-thaw cycles.
Storage:	-20 °C
Storage Comment:	For short term use, store at 2-8°C up to 1 week. For long term storage, store at -20°C in small aliquots to prevent freeze-thaw cycles.

Images



Western Blotting

Image 1. WB Suggested Anti-LDOC1 Antibody Titration: 0.2-1 ug/ml ELISA Titer: 1:12500 Positive Control: HepG2 cell lysate

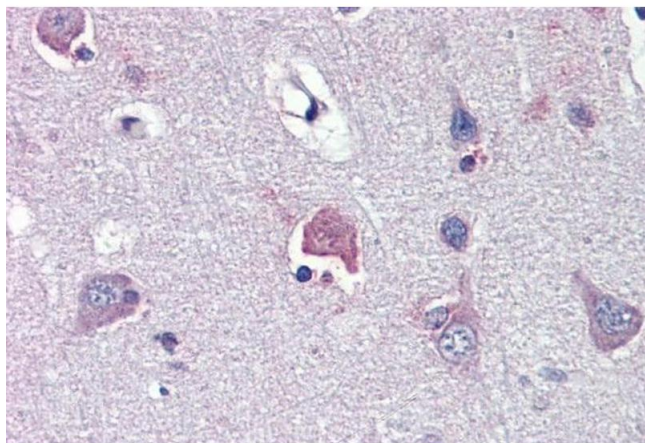


Rabbit Anti-LDOC1 Antibody
Catalog Number: ARP38983
Lot Number: QC9006
Paraffin Embedded Tissue: Human Thyroid
Antibody Concentration: 5.0 µg/ml

Data courtesy of Lifespan Biosciences, Inc.

Immunohistochemistry

Image 2. Immunohistochemistry with Human Thyroid lysate tissue at an antibody concentration of 5.0ug/ml using anti-LDOC1 antibody



Immunohistochemistry

Image 3. Immunohistochemistry with Human brain, cortex tissue at an antibody concentration of 5.0ug/ml using anti-LDOC1 antibody

Please check the [product details page](#) for more images. Overall 4 images are available for ABIN2780876.