

Datasheet for ABIN2780879
anti-NFAT1 antibody (C-Term)

3 Images

[Go to Product page](#)

Overview

Quantity:	100 µL
Target:	NFAT1
Binding Specificity:	C-Term
Reactivity:	Human, Mouse, Rat, Dog, Cow, Horse, Guinea Pig, Rabbit, Zebrafish (Danio rerio)
Host:	Rabbit
Clonality:	Polyclonal
Conjugate:	This NFAT1 antibody is un-conjugated
Application:	Western Blotting (WB), Immunohistochemistry (IHC)

Product Details

Immunogen:	The immunogen is a synthetic peptide directed towards the C terminal region of human NFATC2
Sequence:	PTVIQQQNAT SQRAAKNGPP VSDQKEVLPA GVTIKQEQNL DQTYLDDVNE
Predicted Reactivity:	Cow: 93%, Dog: 100%, Guinea Pig: 100%, Horse: 100%, Human: 100%, Mouse: 100%, Rabbit: 100%, Rat: 100%, Zebrafish: 85%
Characteristics:	This is a rabbit polyclonal antibody against NFATC2. It was validated on Western Blot.
Purification:	Affinity Purified

Target Details

Target:	NFAT1
---------	-------

Target Details

Alternative Name:	NFATC2 (NFAT1 Products)
Background:	<p>This gene is a member of the nuclear factor of activated T cells (NFAT) family. The product of this gene is a DNA-binding protein with a REL-homology region (RHR) and an NFAT-homology region (NHR). This protein is present in the cytosol and only translocates to the nucleus upon T cell receptor (TCR) stimulation, where it becomes a member of the nuclear factors of activated T cells transcription complex. This complex plays a central role in inducing gene transcription during the immune response. Alternate transcriptional splice variants, encoding different isoforms, have been characterized.</p> <p>Alias Symbols: NFAT1, NFATP</p> <p>Protein Interaction Partner: GNB2, USP22, UBC, TNPO1, CSE1L, LRRK2, IQGAP1, PPP2R1A, JUN, NFATC2, CREBBP, IRF2BP2, TFAP4, HNRNPA1, TAF9, TUBA1A, KPNB1, SUV39H1, MAPK9, MAPK8, MED31, NFATC2IP, EP300, IRF4, PPP3R1, YWHAZ, PIN1, MEF2D, FOXP3, VIM, PRKCZ, YWHAQ, EGR4, EGR1, PPP3CB,</p> <p>Protein Size: 925</p>
Molecular Weight:	100 kDa
Gene ID:	4773
NCBI Accession:	NM_173091 , NP_775114
UniProt:	Q13469
Pathways:	RTK Signaling , WNT Signaling , Fc-epsilon Receptor Signaling Pathway , VEGF Signaling , BCR Signaling

Application Details

Application Notes:	Optimal working dilutions should be determined experimentally by the investigator.
Comment:	Antigen size: 925 AA
Restrictions:	For Research Use only

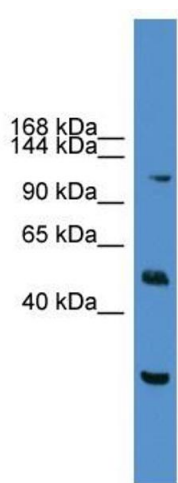
Handling

Format:	Liquid
Concentration:	Lot specific
Buffer:	Liquid. Purified antibody supplied in 1x PBS buffer with 0.09 % (w/v) sodium azide and 2 % sucrose.

Handling

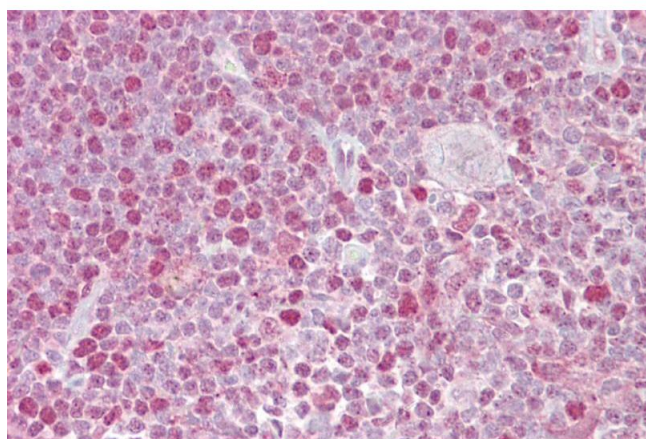
Preservative:	Sodium azide
Precaution of Use:	This product contains Sodium azide: a POISONOUS AND HAZARDOUS SUBSTANCE which should be handled by trained staff only.
Handling Advice:	Avoid repeated freeze-thaw cycles.
Storage:	-20 °C
Storage Comment:	For short term use, store at 2-8°C up to 1 week. For long term storage, store at -20°C in small aliquots to prevent freeze-thaw cycles.

Images



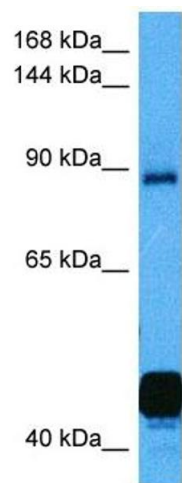
Western Blotting

Image 1. WB Suggested Anti-NFATC2 Antibody Titration: 0.2-1 ug/ml ELISA Titer: 1:312500 Positive Control: Hela cell lysate



Immunohistochemistry

Image 2. Immunohistochemistry with Thymus tissue at an antibody concentration of 5µg/ml using anti-NFATC2 antibody (ARP38988_P050)



Western Blotting

Image 3. Host: Mouse Target Name: NFATC2 Sample
Tissue: Mouse Kidney Antibody Dilution: 1ug/ml