

Datasheet for ABIN2780880  
**anti-GMEB2 antibody (C-Term)**[Go to Product page](#)

## 4 Images

## Overview

|                      |  |
|----------------------|--|
| Quantity:            | 100 µL   |
| Target:              | GMEB2  |
| Binding Specificity: | C-Term   |
| Reactivity:          | Mouse, Human, Rat, Rabbit, Cow, Dog, Horse, Guinea Pig |
| Host:                | Rabbit   |
| Clonality:           | Polyclonal   |
| Conjugate:           | This GMEB2 antibody is un-conjugated                   |
| Application:         | Western Blotting (WB), Immunohistochemistry (IHC)      |

## Product Details

|                       |  |
|-----------------------|--|
| Immunogen:            | The immunogen is a synthetic peptide directed towards the C terminal region of human GMEB2                     |
| Sequence:             | PGLGPTLQNV AQASPGSSTI VTPAGAAPG PEEHTATIEV AAMAEDHERK  |
| Predicted Reactivity: | Cow: 86%, Dog: 86%, Guinea Pig: 93%, Horse: 79%, Human: 100%, Mouse: 86%, Rabbit: 86%, Rat: 86%                |
| Characteristics:      | This is a rabbit polyclonal antibody against GMEB2. It was validated on Western Blot and immunohistochemistry. |
| Purification:         | Protein A purified   |

## Target Details

|         |       |
|---------|-------|
| Target: | GMEB2 |
|---------|-------|

## Target Details

|                   |  |
|-------------------|--|
| Alternative Name: | GMEB2 ( <a href="#">GMEB2 Products</a> )   |
| Background:       | <p>GMEB2 is a member of KDWK family. GMEB2 associates with GMEB1 protein, and the complex is essential for parvovirus DNA replication. Study of rat homolog implicates the role of this gene in modulation of transactivation by the glucocorticoid receptor bound to glucocorticoid response elements. This gene is a member of KDWK gene family. The product of this gene associates with GMEB1 protein, and the complex is essential for parvovirus DNA replication. Study of rat homolog implicates the role of this gene in modulation of transactivation by the glucocorticoid receptor bound to glucocorticoid response elements. This gene appears to use multiple polyadenylation sites.</p> <p>Alias Symbols: PIF79, P79PIF</p> <p>Protein Interaction Partner: CBFA2T3, ATXN1L, ATXN1, GMEB1, UBE2I, CREBBP,</p> <p>Protein Size: 530</p> |
| Molecular Weight: | 56 kDa   |
| Gene ID:          | 26205  |
| NCBI Accession:   | <a href="#">NM_012384</a> , <a href="#">NP_036516</a>  |
| UniProt:          | <a href="#">Q9UKD1</a>   |

## Application Details

|                    |  |
|--------------------|--|
| Application Notes: | Optimal working dilutions should be determined experimentally by the investigator. |
| Comment:           | Antigen size: 530 AA   |
| Restrictions:      | For Research Use only  |

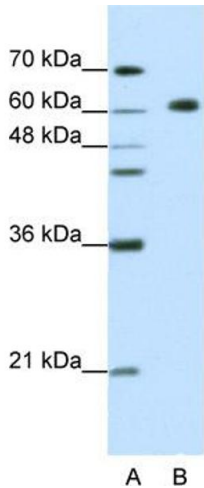
## Handling

|                    |  |
|--------------------|--|
| Format:            | Liquid   |
| Concentration:     | Lot specific   |
| Buffer:            | Liquid. Purified antibody supplied in 1x PBS buffer with 0.09 % (w/v) sodium azide and 2 % sucrose.                    |
| Preservative:      | Sodium azide   |
| Precaution of Use: | This product contains Sodium azide: a POISONOUS AND HAZARDOUS SUBSTANCE which should be handled by trained staff only. |
| Handling Advice:   | Avoid repeated freeze-thaw cycles.   |

Handling

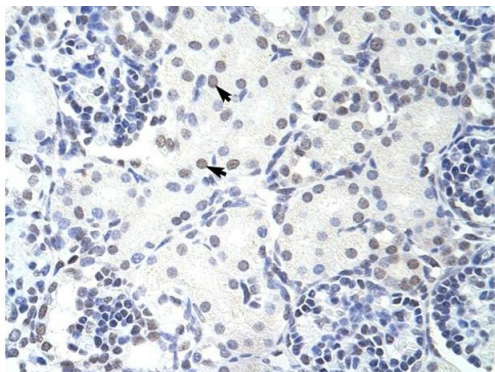
|                  |   |
|------------------|---|
| Storage:         | -20 °C  |
| Storage Comment: | For short term use, store at 2-8°C up to 1 week. For long term storage, store at -20°C in small aliquots to prevent freeze-thaw cycles. |

Images



Western Blotting

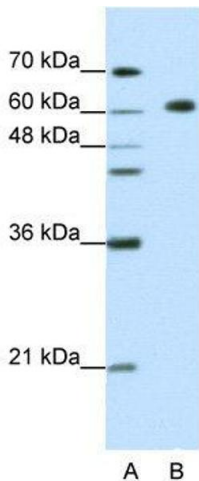
**Image 1.** WB Suggested Anti-GMEB2 Antibody Titration: 1.25ug/ml ELISA Titer: 1:312500 Positive Control: HepG2 cell lysate GMEB2 is strongly supported by BioGPS gene expression data to be expressed in Human HepG2 cells



Immunohistochemistry

**Image 2.** Human kidney

Rabbit Anti-GMEB2 Antibody  
Catalog Number: ARP38990  
Lot Number: QC9511  
Paraffin Embedded Tissue: Human Kidney  
Cells with Positive label: Epithelial cells of renal tubule (Indicated with Arrows)  
Antibody Concentration: 4.0-8.0 µg/ml  
Magnification: 400X



Western Blotting

**Image 3.** WB Suggested Anti-GMEB2 Antibody Titration: 1.25 µg/mL ELISA Titer: 1:312500 Positive Control: HepG2 cell lysate GMEB2 is strongly supported by BioGPS gene expression data to be expressed in Human HepG2 cells

Please check the [product details page](#) for more images. Overall 4 images are available for ABIN2780880.