

Datasheet for ABIN2780882
anti-RLF antibody (N-Term)[Go to Product page](#)

1 Image

Overview

Quantity:	100 µL
Target:	RLF
Binding Specificity:	N-Term
Reactivity:	Human, Cow, Dog, Guinea Pig, Pig
Host:	Rabbit
Clonality:	Polyclonal
Conjugate:	This RLF antibody is un-conjugated
Application:	Western Blotting (WB)

Product Details

Immunogen:	The immunogen is a synthetic peptide directed towards the N terminal region of human RLF
Sequence:	AVAGAGDGVE TESMVRGHRP VSPAPGASGL RPCLWQLETE LREQEVSEVS
Predicted Reactivity:	Cow: 86%, Dog: 85%, Guinea Pig: 79%, Human: 100%, Pig: 86%
Characteristics:	This is a rabbit polyclonal antibody against RLF. It was validated on Western Blot.
Purification:	Affinity Purified

Target Details

Target:	RLF
Alternative Name:	RLF (RLF Products)
Background:	RLF may be involved in transcriptional regulation.

Target Details

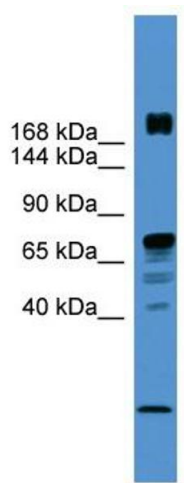
	Alias Symbols: MGC142226, ZN-15L, ZNF292L Protein Interaction Partner: PRPF40A, UBC, ALB, SUMO2, GCH1, RIT2, RIT1, CNKSR2, Protein Size: 1914
Molecular Weight:	218 kDa
Gene ID:	6018
NCBI Accession:	NM_012421 , NP_036553
UniProt:	Q13129

Application Details

Application Notes:	Optimal working dilutions should be determined experimentally by the investigator.
Comment:	Antigen size: 1914 AA
Restrictions:	For Research Use only

Handling

Format:	Liquid
Concentration:	Lot specific
Buffer:	Liquid. Purified antibody supplied in 1x PBS buffer with 0.09 % (w/v) sodium azide and 2 % sucrose.
Preservative:	Sodium azide
Precaution of Use:	This product contains Sodium azide: a POISONOUS AND HAZARDOUS SUBSTANCE which should be handled by trained staff only.
Handling Advice:	Avoid repeated freeze-thaw cycles.
Storage:	-20 °C
Storage Comment:	For short term use, store at 2-8°C up to 1 week. For long term storage, store at -20°C in small aliquots to prevent freeze-thaw cycles.



Western Blotting

Image 1. WB Suggested Anti-RLF Antibody Titration: 0.2-1 ug/ml ELISA Titer: 1:62500 Positive Control: PANC1 cell lysate