

Datasheet for ABIN2780903
anti-REPIN1 antibody (Middle Region)[Go to Product page](#)

2 Images

Overview

Quantity:	100 µL
Target:	REPIN1
Binding Specificity:	Middle Region
Reactivity:	Human, Mouse, Rat, Cow, Rabbit, Dog, Horse, Guinea Pig
Host:	Rabbit
Clonality:	Polyclonal
Conjugate:	This REPIN1 antibody is un-conjugated
Application:	Western Blotting (WB)

Product Details

Immunogen:	The immunogen is a synthetic peptide directed towards the middle region of human REPIN1
Sequence:	VSHRRIHTGE RPYACPDCDR SFSQKSNLIT HRKSHIRDGA FCCAICGQTF
Predicted Reactivity:	Cow: 100%, Dog: 100%, Guinea Pig: 91%, Horse: 100%, Human: 100%, Mouse: 100%, Rabbit: 100%, Rat: 100%
Characteristics:	This is a rabbit polyclonal antibody against REPIN1. It was validated on Western Blot using a cell lysate as a positive control.
Purification:	Affinity Purified

Target Details

Target:	REPIN1
---------	--------

Target Details

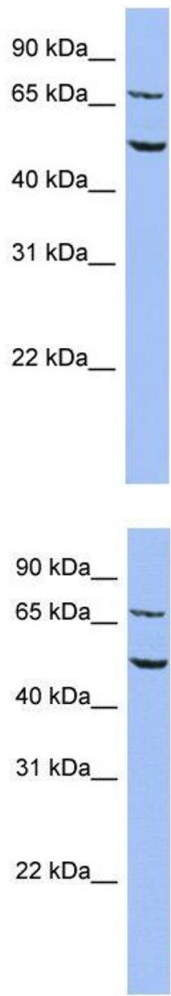
Alternative Name:	REPIN1 (REPIN1 Products)
Background:	<p>Sequence-specific double-stranded DNA-binding protein required for initiation of chromosomal DNA replication. REPIN1 binds on 5'-ATT-3' reiterated sequences downstream of the origin of bidirectional replication (OBR) and a second, homologous ATT sequence</p> <p>Alias Symbols: AP4, RIP60, ZNF464, Zfp464</p> <p>Protein Interaction Partner: UBC, NEDD8, SUMO1, SUZ12, RNF2, BMI1, NEK9, MYCBP, POLA2, HGS, Dlg4, TERF2, GATA3, HDAC2, HDAC1, GMNN, HDAC3,</p> <p>Protein Size: 567</p>
Molecular Weight:	63 kDa
Gene ID:	29803
NCBI Accession:	NM_013400 , NP_037532
UniProt:	Q9BWE0

Application Details

Application Notes:	Optimal working dilutions should be determined experimentally by the investigator.
Comment:	Antigen size: 567 AA
Restrictions:	For Research Use only

Handling

Format:	Liquid
Concentration:	Lot specific
Buffer:	Liquid. Purified antibody supplied in 1x PBS buffer with 0.09 % (w/v) sodium azide and 2 % sucrose.
Preservative:	Sodium azide
Precaution of Use:	This product contains Sodium azide: a POISONOUS AND HAZARDOUS SUBSTANCE which should be handled by trained staff only.
Handling Advice:	Avoid repeated freeze-thaw cycles.
Storage:	-20 °C
Storage Comment:	For short term use, store at 2-8°C up to 1 week. For long term storage, store at -20°C in small aliquots to prevent freeze-thaw cycles.



Western Blotting

Image 1. WB Suggested Anti-REPIN1 Antibody Titration: 0.2-1 ug/ml ELISA Titer: 1:312500 Positive Control: HT1080 cell lysate REPIN1 is supported by BioGPS gene expression data to be expressed in HT1080

Western Blotting

Image 2. WB Suggested Anti-REPIN1 Antibody Titration: 0.2-1 µg/mL ELISA Titer: 1::12500 Positive Control: HT1080 cell lysate REPIN1 is supported by BioGPS gene expression data to be expressed in HT1080