



[Go to Product page](#)

Datasheet for ABIN2780918
anti-CBX6 antibody (N-Term)

2 Images

Overview

Quantity:	100 µL
Target:	CBX6
Binding Specificity:	N-Term
Reactivity:	Human, Mouse, Rat, Dog, Cow, Horse, Guinea Pig, Zebrafish (Danio rerio), Rabbit
Host:	Rabbit
Clonality:	Polyclonal
Conjugate:	This CBX6 antibody is un-conjugated
Application:	Western Blotting (WB), Immunohistochemistry (IHC)

Product Details

Immunogen:	The immunogen is a synthetic peptide directed towards the N terminal region of human CBX6
Sequence:	FAAESIIKRR IRKGRIEYLV KWKGWAIKYS TWEPEENILD SRLIAAFEQK
Predicted Reactivity:	Cow: 100%, Dog: 100%, Guinea Pig: 100%, Horse: 100%, Human: 100%, Mouse: 100%, Rabbit: 100%, Rat: 100%, Zebrafish: 100%
Characteristics:	This is a rabbit polyclonal antibody against CBX6. It was validated on Western Blot and immunohistochemistry.
Purification:	Protein A purified

Target Details

Target:	CBX6
---------	------

Target Details

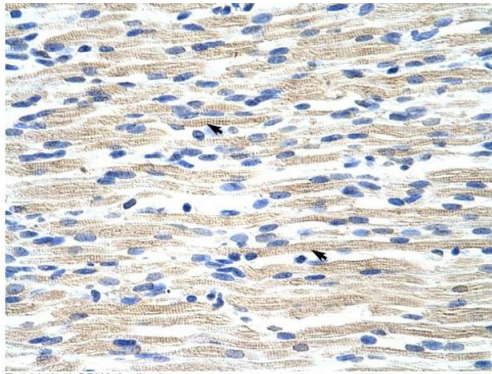
Alternative Name:	CBX6 (CBX6 Products)
Background:	<p>CBX6 is involved in maintaining the transcriptionally repressive state of genes. It modifies chromatin, rendering it heritably changed in its expressibility.</p> <p>Protein Interaction Partner: RNF2, LYN, TOPAZ1, CCDC158, PCGF1, PCGF5, PCGF6, LAS1L, KRI1, RNF213, RGAG1, ZKSCAN7, DACT1, AHDC1, ELP4, KHDRBS1, IGF2BP2, IGF2BP3, IGF2BP1, PAIP1, PCGF3, CEP350, ULK2, UBC, CEP135, NCOR2, ZMYM4, HIST2H2BE, HIST1H2AB, HIST3H3, CHAF1B, PCGF2, ZNF33A, SSB,</p> <p>Protein Size: 412</p>
Molecular Weight:	44 kDa
Gene ID:	23466
NCBI Accession:	NM_014292 , NP_055107
UniProt:	O95503

Application Details

Application Notes:	Optimal working dilutions should be determined experimentally by the investigator.
Comment:	Antigen size: 412 AA
Restrictions:	For Research Use only

Handling

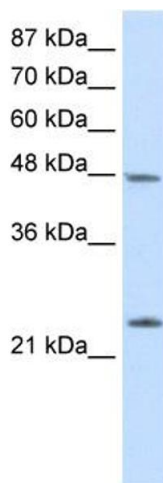
Format:	Liquid
Concentration:	Lot specific
Buffer:	Liquid. Purified antibody supplied in 1x PBS buffer with 0.09 % (w/v) sodium azide and 2 % sucrose.
Preservative:	Sodium azide
Precaution of Use:	This product contains Sodium azide: a POISONOUS AND HAZARDOUS SUBSTANCE which should be handled by trained staff only.
Handling Advice:	Avoid repeated freeze-thaw cycles.
Storage:	-20 °C
Storage Comment:	For short term use, store at 2-8°C up to 1 week. For long term storage, store at -20°C in small aliquots to prevent freeze-thaw cycles.



Rabbit Anti-CBX6 Antibody
Catalog Number: ARP39073
Lot Number: QC10798
Paraffin Embedded Tissue: Human Muscle
Cells with Positive label: Skeletal muscle cells (Indicated with Arrows)
Antibody Concentration: 4.0-8.0 µg/ml
Magnification: 400X

Immunohistochemistry

Image 1. Human Muscle



Western Blotting

Image 2. WB Suggested Anti-CBX6 Antibody Titration:
2.5µg/ml Positive Control: HepG2 cell lysate