



[Go to Product page](#)

Datasheet for ABIN2780919
anti-CBX6 antibody (C-Term)

1 Image

Overview

Quantity:	100 µL
Target:	CBX6
Binding Specificity:	C-Term
Reactivity:	Human, Mouse, Rat, Dog, Cow, Horse, Guinea Pig
Host:	Rabbit
Clonality:	Polyclonal
Conjugate:	This CBX6 antibody is un-conjugated
Application:	Western Blotting (WB)

Product Details

Immunogen:	The immunogen is a synthetic peptide directed towards the C terminal region of human CBX6
Sequence:	SAATSKRAPP EVTAAAGPAP PTAPEPAGAS SEPEAGDWRP EMSPCSNVVV
Predicted Reactivity:	Cow: 100%, Dog: 100%, Guinea Pig: 100%, Horse: 100%, Human: 100%, Mouse: 100%, Rat: 100%
Characteristics:	This is a rabbit polyclonal antibody against CBX6. It was validated on Western Blot using a cell lysate as a positive control.
Purification:	Protein A purified

Target Details

Target:	CBX6
Alternative Name:	CBX6 (CBX6 Products)

Target Details

Background: CBX6 is involved in maintaining the transcriptionally repressive state of genes. It modifies chromatin, rendering it heritably changed in its expressibility.

Protein Interaction Partner: RNF2, LYN, TOPAZ1, CCDC158, PCGF1, PCGF5, PCGF6, LAS1L, KRI1, RNF213, RGAG1, ZKSCAN7, DACT1, AHDC1, ELP4, KHDRBS1, IGF2BP2, IGF2BP3, IGF2BP1, PAIP1, PCGF3, CEP350, ULK2, UBC, CEP135, NCOR2, ZMYM4, HIST2H2BE, HIST1H2AB, HIST3H3, CHAF1B, PCGF2, ZNF33A, SSB,

Protein Size: 412

Molecular Weight: 44 kDa

Gene ID: 23466

NCBI Accession: [NM_014292](#), [NP_055107](#)

UniProt: [O95503](#)

Application Details

Application Notes: Optimal working dilutions should be determined experimentally by the investigator.

Comment: Antigen size: 412 AA

Restrictions: For Research Use only

Handling

Format: Liquid

Concentration: Lot specific

Buffer: Liquid. Purified antibody supplied in 1x PBS buffer with 0.09 % (w/v) sodium azide and 2 % sucrose.

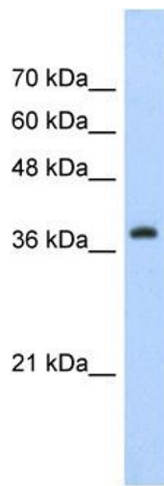
Preservative: Sodium azide

Precaution of Use: This product contains Sodium azide: a POISONOUS AND HAZARDOUS SUBSTANCE which should be handled by trained staff only.

Handling Advice: Avoid repeated freeze-thaw cycles.

Storage: -20 °C

Storage Comment: For short term use, store at 2-8°C up to 1 week. For long term storage, store at -20°C in small aliquots to prevent freeze-thaw cycles.



Western Blotting

Image 1. WB Suggested Anti-CBX6 Antibody Titration:
5.0ug/ml Positive Control: Jurkat cell lysate