

Datasheet for ABIN2780922  
**anti-PATZ1 antibody (N-Term)**[Go to Product page](#)

## 4 Images

## Overview

Quantity:	100 µL
Target:	PATZ1 (ZNF278)
Binding Specificity:	N-Term
Reactivity:	Human, Mouse, Rat, Rabbit, Cow, Dog, Guinea Pig, Horse, Zebrafish (Danio rerio)
Host:	Rabbit
Clonality:	Polyclonal
Conjugate:	This PATZ1 antibody is un-conjugated
Application:	Western Blotting (WB)

## Product Details

Immunogen:	The immunogen is a synthetic peptide directed towards the N terminal region of human PATZ1
Sequence:	MERVNDASCG PSGCYTYQVS RHSTEMLHNL NQQRKNGGRF CDVLLRVGDE
Predicted Reactivity:	Cow: 100%, Dog: 100%, Guinea Pig: 100%, Horse: 100%, Human: 100%, Mouse: 100%, Rabbit: 100%, Rat: 100%, Zebrafish: 79%
Characteristics:	This is a rabbit polyclonal antibody against PATZ1. It was validated on Western Blot using a cell lysate as a positive control.
Purification:	Affinity Purified

## Target Details

Target:	PATZ1 (ZNF278)
---------	----------------

## Target Details

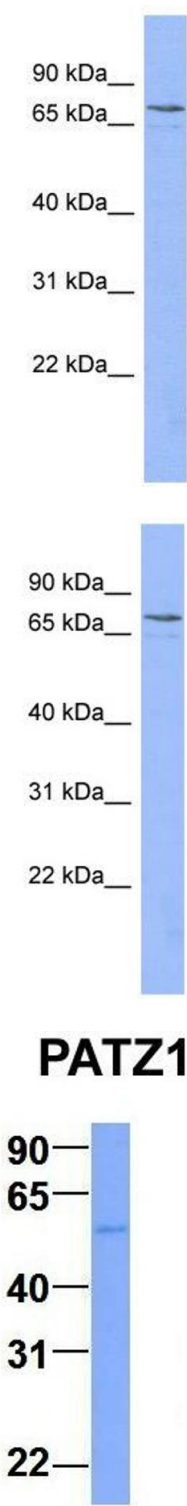
Alternative Name:	PATZ1 ( <a href="#">ZNF278 Products</a> )
Background:	<p>PATZ1 contains an A-T hook DNA binding motif which usually binds to other DNA binding structures to play an important role in chromatin modeling and transcription regulation. Its Poz domain is thought to function as a site for protein-protein interaction</p> <p>Alias Symbols: MAZR, PATZ, RIAZ, ZBTB19, ZNF278, ZSG, dJ400N23</p> <p>Protein Interaction Partner: TP53, SOX2, PRKAR1A, BCL6, BACH2, RNF4, BACH1, MITF, AR,</p> <p>Protein Size: 687</p>
Molecular Weight:	74 kDa
Gene ID:	23598
NCBI Accession:	<a href="#">NM_014323</a> , <a href="#">NP_055138</a>
UniProt:	<a href="#">Q9HBE1</a>

## Application Details

Application Notes:	Optimal working dilutions should be determined experimentally by the investigator.
Comment:	Antigen size: 687 AA
Restrictions:	For Research Use only

## Handling

Format:	Liquid
Concentration:	Lot specific
Buffer:	Liquid. Purified antibody supplied in 1x PBS buffer with 0.09 % (w/v) sodium azide and 2 % sucrose.
Preservative:	Sodium azide
Precaution of Use:	This product contains Sodium azide: a POISONOUS AND HAZARDOUS SUBSTANCE which should be handled by trained staff only.
Handling Advice:	Avoid repeated freeze-thaw cycles.
Storage:	-20 °C
Storage Comment:	For short term use, store at 2-8°C up to 1 week. For long term storage, store at -20°C in small aliquots to prevent freeze-thaw cycles.



#### Western Blotting

**Image 1.** WB Suggested Anti-PATZ1

Antibody Titration: 0.2-1 µg/mL ELISA Titer: 1::2500

Positive Control: HT1080 cell lysate

There is BioGPS gene expression data showing that PATZ1 is expressed in HT1080

#### Western Blotting

**Image 2.** WB Suggested Anti-PATZ1 Antibody Titration: 0.2-

1 ug/ml ELISA Titer: 1:62500 Positive Control: HT1080 cell lysate There is BioGPS gene expression data showing that PATZ1 is expressed in HT1080

#### Western Blotting

**Image 3.** Host: Rabbit Target Name: PATZ1 Sample Type:

Human Adult Placenta Antibody Dilution: 1.0ug/ml

Please check the [product details page](#) for more images. Overall 4 images are available for ABIN2780922.