

Datasheet for ABIN2780931  
**anti-OTX1 antibody (N-Term)**



[Go to Product page](#)

1 Image

## Overview

Quantity:	100 µL
Target:	OTX1
Binding Specificity:	N-Term
Reactivity:	Human, Rat, Mouse, Dog, Cow, Zebrafish (Danio rerio), Guinea Pig, Horse, Rabbit, Sheep
Host:	Rabbit
Clonality:	Polyclonal
Conjugate:	This OTX1 antibody is un-conjugated
Application:	Western Blotting (WB)

## Product Details

Immunogen:	The immunogen is a synthetic peptide directed towards the N terminal region of human OTX1
Sequence:	PRKQRRERTT FTRSQLDVLE ALFAKTRYPD IFMREEVALK INLPESRVQV
Predicted Reactivity:	Cow: 100%, Dog: 100%, Guinea Pig: 100%, Horse: 100%, Human: 100%, Mouse: 100%, Rabbit: 100%, Rat: 100%, Sheep: 93%, Zebrafish: 100%
Characteristics:	This is a rabbit polyclonal antibody against OTX1. It was validated on Western Blot using a cell lysate as a positive control.
Purification:	Affinity Purified

## Target Details

Target:	OTX1
---------	------

## Target Details

Alternative Name:	OTX1 ( <a href="#">OTX1 Products</a> )
Background:	<p>OTX1 probably plays a role in the development of the brain and the sense organs. OTX1 can bind to the BCD target sequence (BTS): 5'-TCTAATCCC-3'. This gene encodes a member of the bicoid sub-family of homeodomain-containing transcription factors. The encoded protein acts as a transcription factor and may play a role in brain and sensory organ development. A similar protein in mice is required for proper brain and sensory organ development and can cause epilepsy.</p> <p>Alias Symbols: FLJ38361, MGC15736</p> <p>Protein Interaction Partner: KRTAP10-3, KRTAP10-8, KRTAP10-5, KRTAP10-11, KRTAP10-1, KRTAP10-9, KRTAP12-2, LCE2D, LCE2A, LCE1B, LCE4A, MGAT5B, KRTAP3-3, KRTAP4-2, KRTAP4-7, KRTAP9-4, KRTAP9-2, KRTAP4-11, GEMIN8P4, KRTAP5-6, KRTAP26-1, KRTAP12-4, KRTAP3-2, KCNK16, KRTAP4-12, RGS17, RB</p> <p>Protein Size: 354</p>
Molecular Weight:	37 kDa
Gene ID:	5013
NCBI Accession:	<a href="#">NM_014562</a> , <a href="#">NP_055377</a>
UniProt:	<a href="#">P32242</a>

## Application Details

Application Notes:	Optimal working dilutions should be determined experimentally by the investigator.
Comment:	Antigen size: 354 AA
Restrictions:	For Research Use only

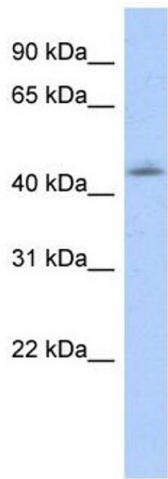
## Handling

Format:	Liquid
Concentration:	Lot specific
Buffer:	Liquid. Purified antibody supplied in 1x PBS buffer with 0.09 % (w/v) sodium azide and 2 % sucrose.
Preservative:	Sodium azide
Precaution of Use:	This product contains Sodium azide: a POISONOUS AND HAZARDOUS SUBSTANCE which should be handled by trained staff only.

Handling

Handling Advice:	Avoid repeated freeze-thaw cycles.
Storage:	-20 °C
Storage Comment:	For short term use, store at 2-8°C up to 1 week. For long term storage, store at -20°C in small aliquots to prevent freeze-thaw cycles.

Images



**Western Blotting**

**Image 1.** WB Suggested Anti-OTX1 Antibody Titration: 0.2-1 ug/ml ELISA Titer: 1:1562500 Positive Control: Transfected 293T