

Datasheet for ABIN2780943  
**anti-GREB1 antibody (N-Term)**[Go to Product page](#)

## 4 Images

## Overview

Quantity:	100 µL
Target:	GREB1
Binding Specificity:	N-Term
Reactivity:	Human, Mouse, Rat, Cow, Dog, Guinea Pig, Horse, Rabbit
Host:	Rabbit
Clonality:	Polyclonal
Conjugate:	This GREB1 antibody is un-conjugated
Application:	Western Blotting (WB), Immunohistochemistry (IHC)

## Product Details

Immunogen:	The immunogen is a synthetic peptide directed towards the N terminal region of human GREB1
Sequence:	IFSQLYLEAE QQLAALEGGS RVDNEEEEEEE GEGGLETNGP PNPFLHPLP
Predicted Reactivity:	Cow: 100%, Dog: 85%, Guinea Pig: 100%, Horse: 100%, Human: 100%, Mouse: 92%, Rabbit: 100%, Rat: 92%
Characteristics:	This is a rabbit polyclonal antibody against GREB1. It was validated on Western Blot using a cell lysate as a positive control.
Purification:	Affinity Purified

## Target Details

Target:	GREB1
---------	-------

## Target Details

Alternative Name:	GREB1 ( <a href="#">GREB1 Products</a> )
Background:	<p>This gene is an estrogen-responsive gene that is an early response gene in the estrogen receptor-regulated pathway. It is thought to play an important role in hormone-responsive tissues and cancer. This gene is an estrogen-responsive gene that is an early response gene in the estrogen receptor-regulated pathway. It is thought to play an important role in hormone-responsive tissues and cancer. Three alternatively spliced transcript variants encoding distinct isoforms have been found for this gene.</p> <p>Alias Symbols: KIAA0575</p> <p>Protein Size: 457</p>
Molecular Weight:	49 kDa
Gene ID:	9687
NCBI Accession:	<a href="#">NM_033090</a> , <a href="#">NP_149081</a>
UniProt:	<a href="#">Q4ZG55</a>

## Application Details

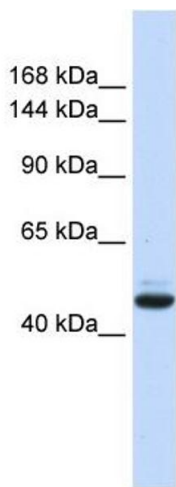
Application Notes:	Optimal working dilutions should be determined experimentally by the investigator.
Comment:	Antigen size: 457 AA
Restrictions:	For Research Use only

## Handling

Format:	Liquid
Concentration:	Lot specific
Buffer:	Liquid. Purified antibody supplied in 1x PBS buffer with 0.09 % (w/v) sodium azide and 2 % sucrose.
Preservative:	Sodium azide
Precaution of Use:	This product contains Sodium azide: a POISONOUS AND HAZARDOUS SUBSTANCE which should be handled by trained staff only.
Handling Advice:	Avoid repeated freeze-thaw cycles.
Storage:	-20 °C
Storage Comment:	For short term use, store at 2-8°C up to 1 week. For long term storage, store at -20°C in small

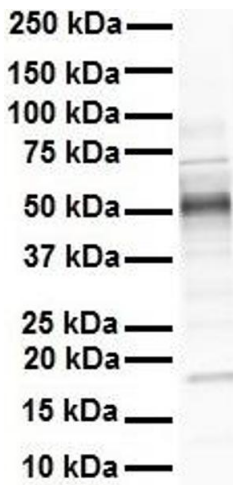
aliquots to prevent freeze-thaw cycles.

Images



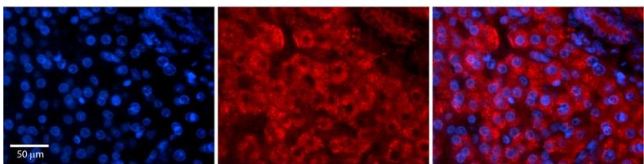
Western Blotting

**Image 1.** WB Suggested Anti-GREB1 Antibody Titration: 0.2-1 ug/ml ELISA Titer: 1:62500 Positive Control: Human brain



Western Blotting

**Image 2.** WB Suggested Anti-GREB1 antibody Titration: 1 ug/mL Sample Type: Human heart



Immunohistochemistry

**Image 3.** Rabbit Anti-GREB1 Antibody Formalin Fixed Paraffin Embedded Tissue: Human Adult liver Observed Staining: Cytoplasmic,Membrane Primary Antibody Concentration: 1:100 Secondary Antibody: Donkey anti-Rabbit-Cy2/3 Secondary Antibody Concentration: 1:200 Magnification: 20X Exposure Time: 0.5 – 2.0 sec Protocol located in Reviews and Data.

Please check the [product details page](#) for more images. Overall 4 images are available for ABIN2780943.