



[Go to Product page](#)

Datasheet for ABIN2780946  
**anti-TSC22D2 antibody (N-Term)**

3 Images

Overview

Quantity:	100 µL
Target:	TSC22D2
Binding Specificity:	N-Term
Reactivity:	Human, Mouse, Rat, Dog, Cow, Rabbit, Guinea Pig, Zebrafish (Danio rerio)
Host:	Rabbit
Clonality:	Polyclonal
Conjugate:	This TSC22D2 antibody is un-conjugated
Application:	Western Blotting (WB)

Product Details

Immunogen:	The immunogen is a synthetic peptide directed towards the N terminal region of human TSC22D2
Sequence:	CFQITSVTTA QVATSITEDT ESLDDPDESR TEDVSSEIFD VSRATDYGPE
Predicted Reactivity:	Cow: 100%, Dog: 100%, Guinea Pig: 100%, Human: 100%, Mouse: 100%, Rabbit: 100%, Rat: 100%, Zebrafish: 87%
Characteristics:	This is a rabbit polyclonal antibody against TSC22D2. It was validated on Western Blot using a cell lysate as a positive control.
Purification:	Affinity Purified

Target Details

Target:	TSC22D2
---------	---------

## Target Details

---

Alternative Name:	TSC22D2 ( <a href="#">TSC22D2 Products</a> )
Background:	TSC22D2 belongs to the TSC-22/Dip/Bun family and the function remains unknown. Alias Symbols: TILZ4a, TILZ4b, TILZ4c Protein Interaction Partner: UBC, KEAP1, Protein Size: 780
Molecular Weight:	79 kDa
Gene ID:	9819
NCBI Accession:	<a href="#">NM_014779</a> , <a href="#">NP_055594</a>
UniProt:	<a href="#">O75157</a>

## Application Details

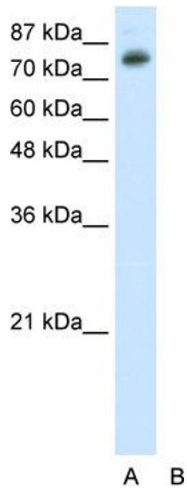
---

Application Notes:	Optimal working dilutions should be determined experimentally by the investigator.
Comment:	Antigen size: 780 AA
Restrictions:	For Research Use only

## Handling

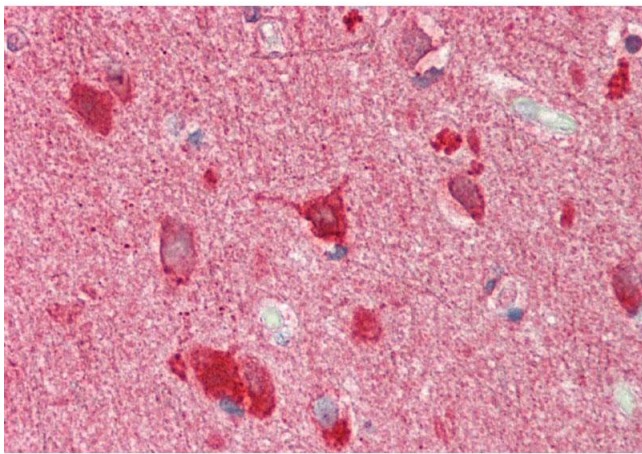
---

Format:	Liquid
Concentration:	Lot specific
Buffer:	Liquid. Purified antibody supplied in 1x PBS buffer with 0.09 % (w/v) sodium azide and 2 % sucrose.
Preservative:	Sodium azide
Precaution of Use:	This product contains Sodium azide: a POISONOUS AND HAZARDOUS SUBSTANCE which should be handled by trained staff only.
Handling Advice:	Avoid repeated freeze-thaw cycles.
Storage:	-20 °C
Storage Comment:	For short term use, store at 2-8°C up to 1 week. For long term storage, store at -20°C in small aliquots to prevent freeze-thaw cycles.



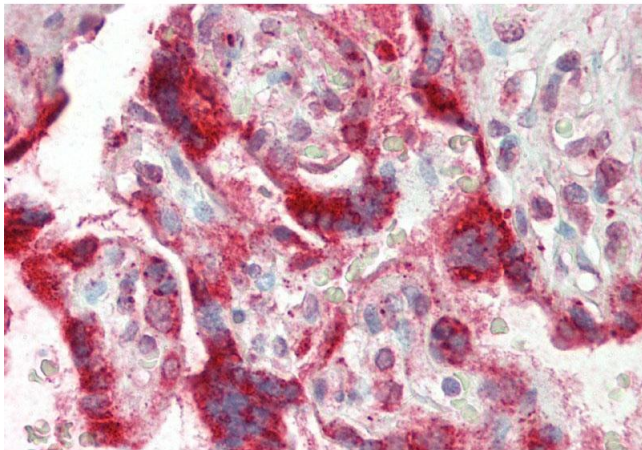
### Western Blotting

**Image 1.** WB Suggested Anti-TSC22D2 Antibody Titration: 0.2-1 ug/ml ELISA Titer: 1:12500 Positive Control: HepG2 cell lysate



### Immunohistochemistry

**Image 2.** Rabbit Anti-TSC22D2 antibody Formalin Fixed Paraffin Embedded Tissue: Human Brain, Cortex Primary antibody Concentration: 1:100 Secondary Antibody: Donkey anti-Rabbit-Cy3 Secondary Antibody Concentration: 1:200 Magnification: 20x Exposure Time: 0.5-2.0sec



### Immunohistochemistry

**Image 3.** Rabbit Anti-TSC22D2 antibody Formalin Fixed Paraffin Embedded Tissue: Human Placenta Primary antibody Concentration: 1:100 Secondary Antibody: Donkey anti-Rabbit-Cy3 Secondary Antibody Concentration: 1:200 Magnification: 20x Exposure Time: 0.5-2.0sec