

Datasheet for ABIN2780948
anti-ZEB2 antibody (Middle Region)[Go to Product page](#)

4 Images

3 Publications

Overview

Quantity:	100 µL
Target:	ZEB2
Binding Specificity:	Middle Region
Reactivity:	Human, Mouse, Rat, Cow, Horse, Guinea Pig, Pig, Zebrafish (Danio rerio)
Host:	Rabbit
Clonality:	Polyclonal
Conjugate:	This ZEB2 antibody is un-conjugated
Application:	Western Blotting (WB), Immunohistochemistry (IHC)

Product Details

Immunogen:	The immunogen is a synthetic peptide directed towards the middle region of human ZEB2
Sequence:	LGRQDGDEEF EEEEESENK SMDTDPETIR DEEETGDHSM DDSSSEDGKME
Predicted Reactivity:	Cow: 100%, Guinea Pig: 93%, Horse: 100%, Human: 100%, Mouse: 100%, Pig: 100%, Rat: 100%, Zebrafish: 79%
Characteristics:	This is a rabbit polyclonal antibody against ZEB2. It was validated on Western Blot using a cell lysate as a positive control.
Purification:	Affinity Purified

Target Details

Target:	ZEB2
---------	------

Target Details

Alternative Name:	ZEB2 (ZEB2 Products)
Background:	<p>The ZFH1B gene is a member of the delta-EF1/Zfh1 family of 2-handed zinc finger/homeodomain proteins. ZFH1B is strongly transcribed at an early stage in the developing peripheral and central nervous systems of both mice and humans, in all neuronal regions of the brains of 25-week human fetuses and adult mice, and in numerous nonneural tissues. The SMADIP1 gene (also known as SIP1) is a member of the delta-EF1 (ZEB1, MIM 189909)/Zfh1 family of 2-handed zinc finger/homeodomain proteins. SMADIP1 interacts with receptor-mediated, activated full-length SMADs (see MIM 605568) (Verschueren et al., 1999 [PubMed 10400677]).[supplied by OMIM]. Publication Note: This RefSeq record includes a subset of the publications that are available for this gene. Please see the Entrez Gene record to access additional publications. PRIMARYREFSEQ_SPAN PRIMARY_IDENTIFIER PRIMARY_SPAN COMP 1-58 AB056507.1 1-58 59-553 AL118674.1 57-551 554-5558 AB056507.1 553-5557 5559-5583 AI858477.1 1-25 c</p> <p>Alias Symbols: KIAA0569, SIP-1, SIP1, SMADIP1, ZFH1B, HSPC082</p> <p>Protein Interaction Partner: CTBP1, SOX2, SMAD9, SMAD3, SMAD2, SMAD1, APP, HDAC4, CBX4, SUMO1, UBE2I, ELAVL1, UBC, MTA2, MTA1, RBBP7, RBBP4, HDAC2, HDAC1, CEBPA, COPS6, SMAD5, CTBP2,</p> <p>Protein Size: 1214</p>
Molecular Weight:	136 kDa
Gene ID:	9839
NCBI Accession:	NM_014795 , NP_055610
UniProt:	O60315
Pathways:	Tube Formation

Application Details

Application Notes:	Optimal working dilutions should be determined experimentally by the investigator.
Comment:	Antigen size: 1214 AA
Restrictions:	For Research Use only

Handling

Format:	Liquid
Concentration:	Lot specific

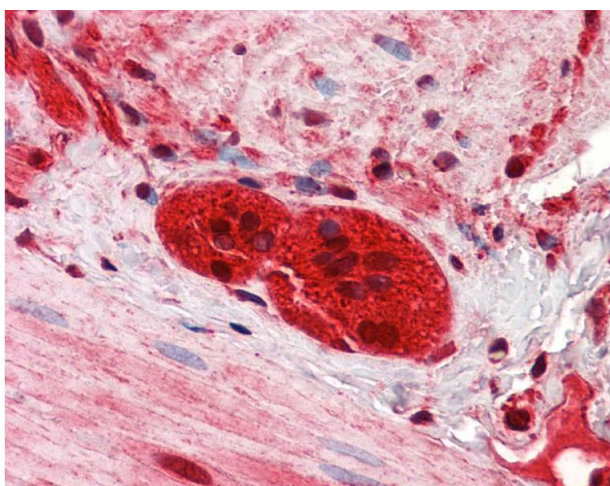
Handling

Buffer:	Liquid. Purified antibody supplied in 1x PBS buffer with 0.09 % (w/v) sodium azide and 2 % sucrose.
Preservative:	Sodium azide
Precaution of Use:	This product contains Sodium azide: a POISONOUS AND HAZARDOUS SUBSTANCE which should be handled by trained staff only.
Handling Advice:	Avoid repeated freeze-thaw cycles.
Storage:	-20 °C
Storage Comment:	For short term use, store at 2-8°C up to 1 week. For long term storage, store at -20°C in small aliquots to prevent freeze-thaw cycles.

Publications

Product cited in:	Libby, Bales, Orlicky, McManaman: "Perilipin-2 Deletion Impairs Hepatic Lipid Accumulation by Interfering with Sterol Regulatory Element-binding Protein (SREBP) Activation and Altering the Hepatic Lipidome." in: The Journal of biological chemistry , Vol. 291, Issue 46, pp. 24231-24246 , (2016) (PubMed).
-------------------	---

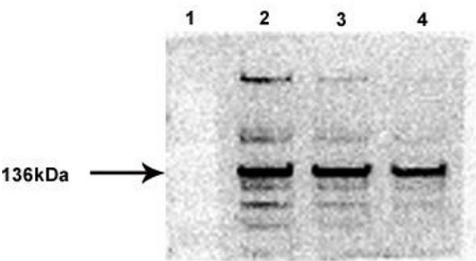
Images



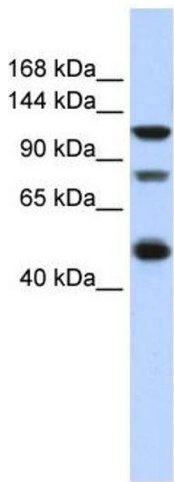
Immunohistochemistry

Image 1. IHC Information: Paraffin embedded small intestine, myenteric plexus tissue, tested with an antibody dilution of 2.5 ug/ml.

ZEB2



See Immunoblot 2 Data and Customer Feedback tab for more information.



Western Blotting

Image 2. Sample Type: 1. Molecular Weight

2. Control (20ug)

3. shRNA1-ZEB2 H9 hES cells (20ug)

4. shRNA2-ZEB2 H9 hES cells (20ug)

Primary Dilution: 1:1000

Secondary Antibody: anti-Rabbit HRP

Secondary Dilution: 1:5000

Image Submitted By: Jingli Cai

Thomas Jefferson University

Western Blotting

Image 3. WB Suggested Anti-ZEB2 Antibody Titration: 0.2-1

ug/ml ELISA Titer: 1:62500 Positive Control: Hela cell lysate

Please check the [product details page](#) for more images. Overall 4 images are available for ABIN2780948.