

Datasheet for ABIN2780950  
**anti-TOX4 antibody (C-Term)**[Go to Product page](#)[1 Image](#)[1 Publication](#)

## Overview

Quantity:	100 µL
Target:	TOX4
Binding Specificity:	C-Term
Reactivity:	Human, Mouse, Rat, Dog, Zebrafish (Danio rerio), Cow, Goat, Guinea Pig, Horse, Rabbit
Host:	Rabbit
Clonality:	Polyclonal
Conjugate:	This TOX4 antibody is un-conjugated
Application:	Western Blotting (WB)

## Product Details

Immunogen:	The immunogen is a synthetic peptide directed towards the C-terminal region of human TOX4
Sequence:	RCVRSGCENP PIVSKDWDNE YCSNECVVKH CRDVFLAWVA SRNSNTVVFV
Predicted Reactivity:	Cow: 93%, Dog: 93%, Goat: 93%, Guinea Pig: 93%, Horse: 93%, Human: 100%, Mouse: 93%, Rabbit: 93%, Rat: 86%, Zebrafish: 77%
Characteristics:	This is a rabbit polyclonal antibody against TOX4. It was validated on Western Blot.
Purification:	Affinity Purified

## Target Details

Target:	TOX4
Alternative Name:	TOX4 ( <a href="#">TOX4 Products</a> )

## Target Details

Background: Alias Symbols: LCP1, MIG7, C14orf92, KIAA0737  
Protein Size: 598

Molecular Weight: 65 kDa

Gene ID: 9878

NCBI Accession: [NM\\_001303523](#), [NP\\_001290452](#)

UniProt: [B4DPY8](#)

## Application Details

Application Notes: Optimal working dilution should be determined by the investigator.

Restrictions: For Research Use only

## Handling

Format: Liquid

Concentration: 1 mg/mL

Buffer: Liquid. Purified antibody supplied in 1x PBS buffer with 0.09 % (w/v) sodium azide and 2 % sucrose.

Preservative: Sodium azide

Precaution of Use: This product contains Sodium azide: a POISONOUS AND HAZARDOUS SUBSTANCE which should be handled by trained staff only.

Handling Advice: Avoid repeat freeze-thaw cycles.

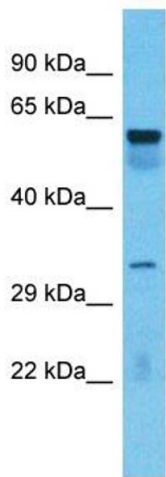
Storage: -20 °C

Storage Comment: For short term use, store at 2-8°C up to 1 week. For long term storage, store at -20°C in small aliquots to prevent freeze-thaw cycles.

## Publications

Product cited in: Halwachs, Lakoma, Schäfer, Seibel, Honscha: "The antiepileptic drugs phenobarbital and carbamazepine reduce transport of methotrexate in rat choroid plexus by down-regulation of the reduced folate carrier." in: **Molecular pharmacology**, Vol. 80, Issue 4, pp. 621-9, (2011) ([PubMed](#)).

Marchi, Paoluzzi, Scotto, Seshan, Zain, Zinzani, OConnor: "Pralatrexate is synergistic with the proteasome inhibitor bortezomib in in vitro and in vivo models of T-cell lymphoid malignancies." in: **Clinical cancer research : an official journal of the American Association for Cancer Research**, Vol. 16, Issue 14, pp. 3648-58, (2010) ([PubMed](#)).



Western Blotting

**Image 1.** Host: Rabbit Target Name: TOX4 Sample Type: Lung tumor lysates Antibody Dilution: 1.0ug/ml