

Datasheet for ABIN2780971
anti-PHF15 antibody (N-Term)[Go to Product page](#)

2 Images

Overview

Quantity:	100 µL
Target:	PHF15
Binding Specificity:	N-Term
Reactivity:	Human, Mouse, Horse, Rabbit, Rat, Cow, Dog, Guinea Pig, Zebrafish (Danio rerio)
Host:	Rabbit
Clonality:	Polyclonal
Conjugate:	This PHF15 antibody is un-conjugated
Application:	Western Blotting (WB)

Product Details

Immunogen:	The immunogen is a synthetic peptide directed towards the N-terminal region of human JADE2
Sequence:	MEEKRRKYSI SSDNSDTTDS HATSTSASRC SKLPSSSTKSG WPRQNEKKPS
Predicted Reactivity:	Cow: 100%, Dog: 100%, Guinea Pig: 100%, Horse: 100%, Human: 100%, Mouse: 100%, Rabbit: 100%, Rat: 100%, Zebrafish: 77%
Characteristics:	This is a rabbit polyclonal antibody against PHF15. It was validated on Western Blot.
Purification:	Affinity Purified

Target Details

Target:	PHF15
Alternative Name:	PHF15 (PHF15 Products)

Target Details

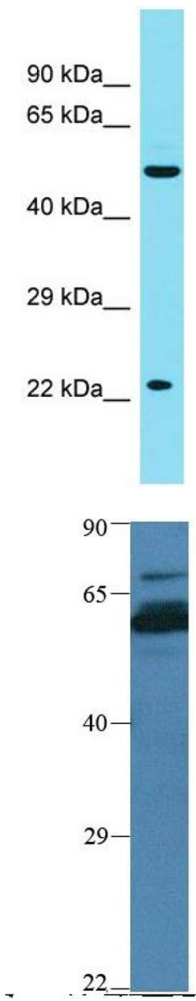
Background:	Alias Symbols: PHF15, JADE-2 Protein Size: 509
Molecular Weight:	63 kDa
Gene ID:	23338
NCBI Accession:	NM_001289984 , NP_001276913
UniProt:	Q9NQC1

Application Details

Application Notes:	Optimal working dilution should be determined by the investigator.
Restrictions:	For Research Use only

Handling

Format:	Liquid
Concentration:	1 mg/mL
Buffer:	Liquid. Purified antibody supplied in 1x PBS buffer with 0.09 % (w/v) sodium azide and 2 % sucrose.
Preservative:	Sodium azide
Precaution of Use:	This product contains Sodium azide: a POISONOUS AND HAZARDOUS SUBSTANCE which should be handled by trained staff only.
Handling Advice:	Avoid repeat freeze-thaw cycles.
Storage:	-20 °C
Storage Comment:	For short term use, store at 2-8°C up to 1 week. For long term storage, store at -20°C in small aliquots to prevent freeze-thaw cycles.



Western Blotting

Image 1. Host: Rabbit Target Name: PHF15 Sample Type: Liver Tumor lysates Antibody Dilution: 1.0ug/ml

Western Blotting

Image 2. Host: Rabbit Target Name: PHF15 Sample Type: Human muscle Antibody Dilution: 1.0ug/ml