



[Go to Product page](#)

Datasheet for ABIN2780988  
**anti-LSR antibody (C-Term)**

2 Images

Overview

Quantity:	100 µL
Target:	LSR
Binding Specificity:	C-Term
Reactivity:	Human, Mouse, Rat, Dog, Horse, Rabbit, Cow, Guinea Pig
Host:	Rabbit
Clonality:	Polyclonal
Conjugate:	This LSR antibody is un-conjugated
Application:	Western Blotting (WB)

Product Details

Immunogen:	The immunogen is a synthetic peptide directed towards the C terminal region of human LSR
Sequence:	RKKGSEERRR PHKEEEEEAY YPPAPPPYSE TDSQASRERR LKKNLALSRE
Predicted Reactivity:	Cow: 100%, Dog: 100%, Guinea Pig: 92%, Horse: 100%, Human: 100%, Mouse: 100%, Rabbit: 100%, Rat: 100%
Characteristics:	This is a rabbit polyclonal antibody against LSR. It was validated on Western Blot using a cell lysate as a positive control.
Purification:	Affinity Purified

Target Details

Target:	LSR
---------	-----

## Target Details

---

Alternative Name:	LSR ( <a href="#">LSR Products</a> )
Background:	<p>LSR has a probable role in the clearance of triglyceride-rich lipoprotein from blood. It binds chylomicrons, LDL and VLDL in presence of free fatty acids and allows their subsequent uptake in the cells.</p> <p>Alias Symbols: LISCH7, MGC10659, MGC48312, MGC48503, ILDR3</p> <p>Protein Interaction Partner: MAPKAPK5, YWHAE, UBC, RARG, YWHAG, YWHAB, SFN,</p> <p>Protein Size: 630</p>
Molecular Weight:	69 kDa
Gene ID:	51599
NCBI Accession:	<a href="#">NM_015925</a> , <a href="#">NP_057009</a>
UniProt:	<a href="#">Q86X29</a>

## Application Details

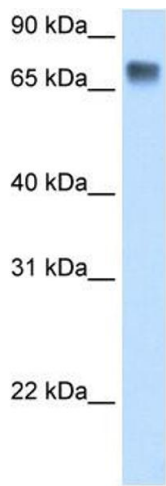
---

Application Notes:	Optimal working dilutions should be determined experimentally by the investigator.
Comment:	Antigen size: 630 AA
Restrictions:	For Research Use only

## Handling

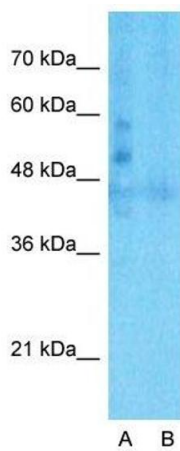
---

Format:	Liquid
Concentration:	Lot specific
Buffer:	Liquid. Purified antibody supplied in 1x PBS buffer with 0.09 % (w/v) sodium azide and 2 % sucrose.
Preservative:	Sodium azide
Precaution of Use:	This product contains Sodium azide: a POISONOUS AND HAZARDOUS SUBSTANCE which should be handled by trained staff only.
Handling Advice:	Avoid repeated freeze-thaw cycles.
Storage:	-20 °C
Storage Comment:	For short term use, store at 2-8°C up to 1 week. For long term storage, store at -20°C in small aliquots to prevent freeze-thaw cycles.



#### Western Blotting

**Image 1.** WB Suggested Anti-LSR Antibody Titration: 0.2-1 ug/ml ELISA Titer: 1:62500 Positive Control: Human Liver



#### Western Blotting

**Image 2.** Host: Rabbit Target Name: LSR Sample Type: Human Fetal Liver Lane A: Primary Antibody Lane B: Primary Antibody + Blocking Peptide Primary Antibody Concentration: 1ug/ml Peptide Concentration: 5ug/ml Lysate Quantity: 25ug/lane/lane Gel Concentration: 0.12