



[Go to Product page](#)

Datasheet for ABIN2780994
anti-ZFR antibody (N-Term)

2 Images

Overview

Quantity:	100 µL
Target:	ZFR
Binding Specificity:	N-Term
Reactivity:	Human, Mouse, Rat, Dog, Rabbit, Zebrafish (Danio rerio)
Host:	Rabbit
Clonality:	Polyclonal
Conjugate:	This ZFR antibody is un-conjugated
Application:	Western Blotting (WB), Immunohistochemistry (IHC)

Product Details

Sequence:	ICPVVSFTYV PSRLGEDAKM ATGNYFGFTH SGAAAAAAAA QYSQQPASGV
Predicted Reactivity:	Dog: 100%, Human: 100%, Mouse: 100%, Rabbit: 100%, Rat: 100%, Zebrafish: 100%
Characteristics:	This is a rabbit polyclonal antibody against Zfr. It was validated on Western Blot.
Purification:	Affinity Purified

Target Details

Target:	ZFR
Alternative Name:	Zfr (ZFR Products)
Background:	The function of this protein remains unknown. Alias Symbols: C920030H05Rik, MGC176100

Target Details

Protein Interaction Partner: Eed, Nanog,
Protein Size: 1052

Molecular Weight: 114 kDa

Gene ID: 22763

NCBI Accession: [NM_011767](#), [NP_035897](#)

UniProt: [B2RUG7](#)

Application Details

Application Notes: Optimal working dilutions should be determined experimentally by the investigator.

Comment: Antigen size: 1052 AA

Restrictions: For Research Use only

Handling

Format: Liquid

Concentration: Lot specific

Buffer: Liquid. Purified antibody supplied in 1x PBS buffer with 0.09 % (w/v) sodium azide and 2 % sucrose.

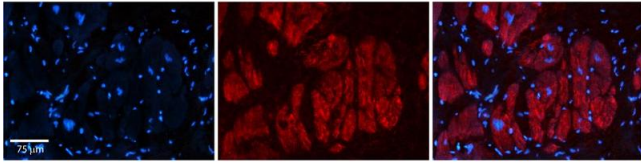
Preservative: Sodium azide

Precaution of Use: This product contains Sodium azide: a POISONOUS AND HAZARDOUS SUBSTANCE which should be handled by trained staff only.

Handling Advice: Avoid repeated freeze-thaw cycles.

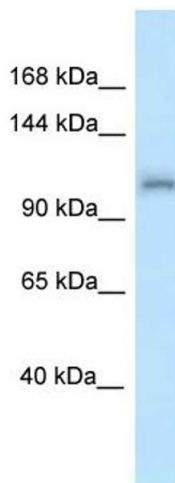
Storage: -20 °C

Storage Comment: For short term use, store at 2-8°C up to 1 week. For long term storage, store at -20°C in small aliquots to prevent freeze-thaw cycles.



Immunohistochemistry

Image 1. Rabbit Anti-Zfr Antibody Catalog Number: ARP39226_P050 Formalin Fixed Paraffin Embedded Tissue: Human Adult heart Observed Staining: Cytoplasmic Primary Antibody Concentration: 1:600 Secondary Antibody: Donkey anti-Rabbit-Cy2/3 Secondary Antibody Concentration: 1:200 Magnification: 20X Exposure Time: 0.5 – 2.0 sec Protocol located in Reviews and Data.



Western Blotting

Image 2. WB Suggested Anti-Zfr Antibody Titration: 1.0 ug/ml Positive Control: Mouse Liver